

MR Status
Fort Ord MR BCT
15 August 2018

BLM AREA B

Security measures and Outreach

- The website and kiosks were updated with current trail closure information on 8/13.
- Notice and warning signs, trail closure fences, and boundary fences are in place around the ongoing work areas in units B, C, B-3W, B-3E, and B-2A.
- Boundary fences, notice and warning signs, and trail closure fences are being installed around Unit A as burn prep mastication progresses.

Vegetation Removal

- Required mastication for 2018 prescribed burn in Unit 31 is complete and mastication in Unit A containment lines (CL) is nearing completion.
- Manual vegetation removal along Trail 62 12-ft trail footprint in Unit B-2A began on 8/14.

Surface removal

- Surface MEC removal is complete in Unit C, and in Unit B except for one grid.
- Surface MEC removal was started in Unit A CLs.
- Surface MEC removal in Unit B-2A is complete except for 11 acres that comprise the Trail 62 buffer.
- Surface MEC removal along the 12-foot trail footprint of Trail 62 in Unit B-2A will begin following vegetation removal along the trail.

Digital Geophysical Mapping (DGM)

- DGM in Unit B-3E west of Addington is complete except for the area of heavy Toro manzanita and tree density near Trail 56 and along East Machine Gun Flats Road. The results of surface MEC removal and DGM in the surrounding area are being evaluated and an approach to address this area is in development.
- DGM was completed in Unit B-3W, except for approximately 5 acres that were inaccessible due to dense stands of trees.
- DGM was started in Unit C burn area.
- Person-portable DGM on Trail 62 will begin following vegetation removal and surface MEC removal.

Subsurface MEC Removal and Burn Prep Activities

- Construction of new temporary fuel break road on the north side of Unit A is complete.
- Subsurface MEC removal on 12-ft wide Trail 62 footprint in Unit B-2A will proceed following vegetation removal, surface MEC removal and DGM activities.
- Planning for subsurface MEC removal on trails in B-3E-NE is underway.
- During surface MEC removal in Unit B-2A, a 4.2-inch mortar with unknown filler was discovered and later determined to be FS-smoke. To address possible additional unknown filler items that could be present in Unit B-2A, investigation of DGM targets with the potential to be 4.2-in mortars was started on 8/7 using the Metal Mapper 2x2 to cue the anomalies and develop a target dig list. Intrusive investigation of targets of interest will begin following the advanced classification (AC) work.

IMPACT AREA

FIELD ACTIVITIES

Unit 3 Livens/Stokes Investigation

- Remainder of identified anomalies outside of original area of interest in previous Unit 3 Livens/Stokes investigation of potential unknown filler items will be excavated.
- Work is expected to be conducted concurrently or subsequent to the Unit B-2A 4.2-inch investigation in BLM Area B.

Impossible Canyon Road and Wildcat Ridge Road Fuel Break Work

- Vegetation removal along approximately 14 acres of fuel breaks designated for realignment or additional DGM began on 8/14.
- DGM and subsurface MEC removal activities will begin following mastication.

Unit 23 Risk Reduction

- Unit 23 Risk Reduction MM 2x2 cued survey of 1,279 targets was completed on 7/25, including the 56 targets in HMP grids.
- Intrusive investigation of the anomalies will begin as soon as target dig list is finalized.

Fuel Breaks QC Digs

- Additional verification fieldwork in specific segments of the fuel breaks is scheduled to begin once Unit A is burn ready.

Subsurface MEC Removal and Restoration Activities

- Watkins Gate Burn Area (WGBA) mortar pits and Austin Road latrine depression restoration projects are planned to begin in September.
- Work to remove up to 32 buildings in Impact Area units and Unit B-3W is expected to proceed in late August. This work will include Iron Triangle cleanup and OU2 landfill activities.

Target/Debris Disposal

- No demolition operations were conducted since the last MR BCT.
- MD scrap sorting remains on hold until sufficient scrap accumulates.

OTHER ACTIVITIES

Broadway Bypass AC MEC Remediation

- Phase 2 target and quality assurance (QA) digs, including 104 additional QA validation digs, are complete.
- A remedial action report is in development.

Munitions with Sensitive Fuzes Field Study

- Excavation of the target digs (1,817) is complete.
- A study findings report is in development.

Vernal Pool Anomaly Investigation

- A list of targets for subsurface removal in vernal ponds has been developed. The final target list for reacquisition is complete.
- The Metal Mapper 2x2 field cueing is scheduled to begin in late August.
- An approach to perform target excavation while minimizing impacts to the ponds will be developed.

Units 13, 17, 20 Evaluation

- Further transect investigation in Unit 17 has been deemed unnecessary and fieldwork is now considered complete.
- A report of findings and recommendations is in development.

Annual Surface Monitoring

- The annual surface monitoring report is in development.

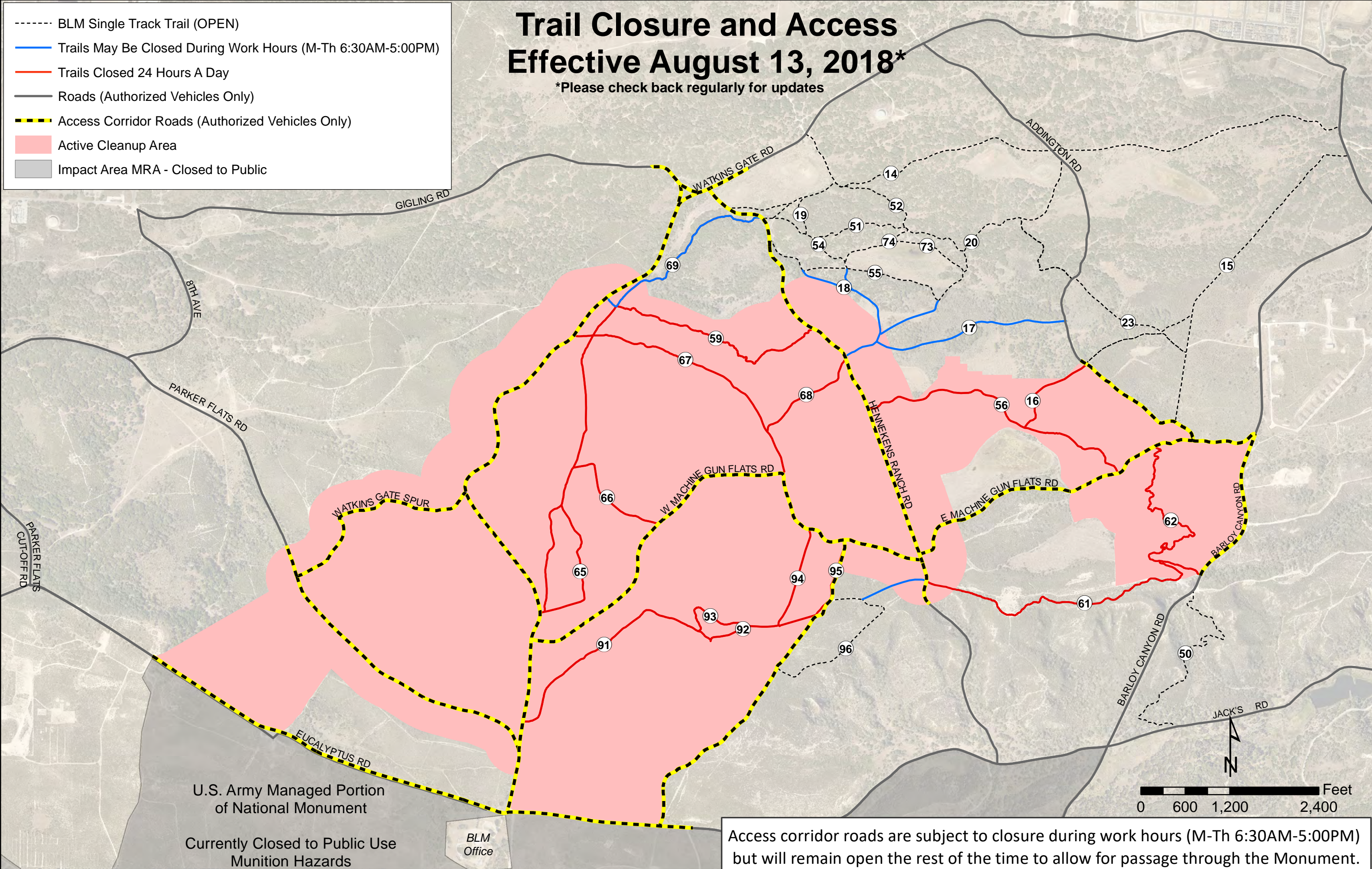
MMRP SITE SECURITY PROGRAM

- Trespass Incident Reports
 - Last 34 days (ending 8/13/2018): 0
 - Year to Date: 7
- Munitions Incident Reports
 - Last 34 days (ending 8/13/2018): 0
 - Year to Date: 8
- Community Education Participants– Year to Date: 265
- Munitions Recognition and Safety Training Participants – Year to Date: 145

Trail Closure and Access Effective August 13, 2018*

*Please check back regularly for updates

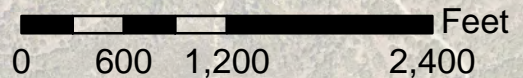
- BLM Single Track Trail (OPEN)
- Trails May Be Closed During Work Hours (M-Th 6:30AM-5:00PM)
- Trails Closed 24 Hours A Day
- Roads (Authorized Vehicles Only)
- Access Corridor Roads (Authorized Vehicles Only)
- Active Cleanup Area
- Impact Area MRA - Closed to Public



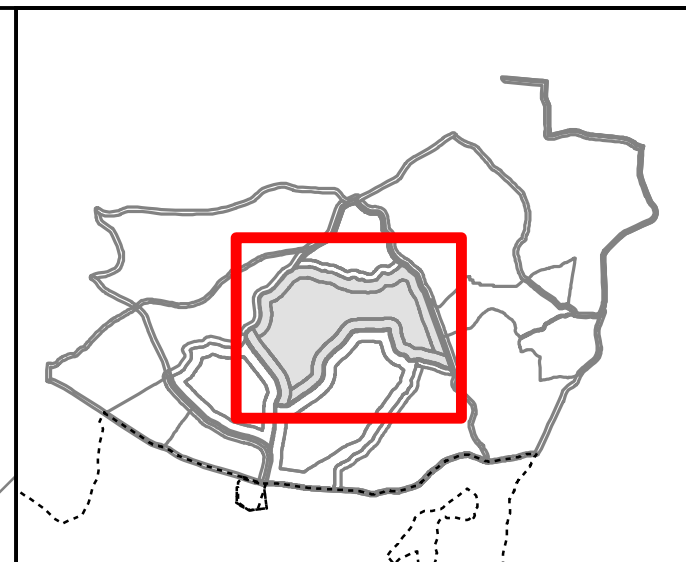
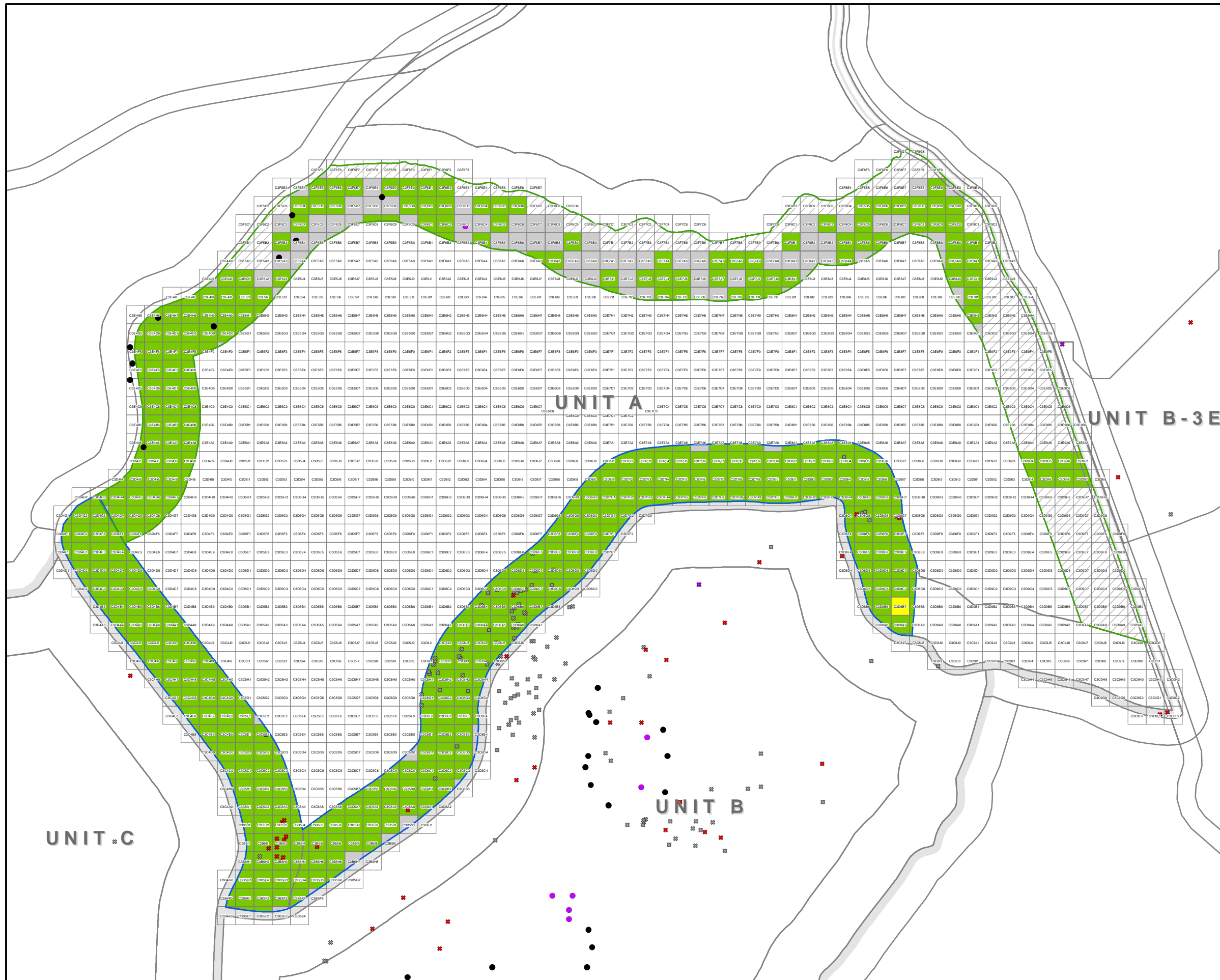
U.S. Army Managed Portion
of National Monument

Currently Closed to Public Use
Munition Hazards

BLM
Office



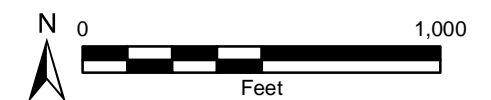
Access corridor roads are subject to closure during work hours (M-Th 6:30AM-5:00PM) but will remain open the rest of the time to allow for passage through the Monument.



Legend

- DMM (CP)
- DMM (LIP)
- ✖ DMM (CP, Destroyed)
- ✖ DMM (LIP, Destroyed)
- MD, LIP
- ✖ Expended (Destroyed)
- ✖ Live (Destroyed)
- MPPEH (CP)
- MPPEH (LIP)
- ✖ UXO (LIP, Destroyed)
- Containment Line
- 2018 Primary Containment Line
- Burn Unit Outline
- Surface Removal Planned
- No MD
- < 75 Lbs MD
- 75-250 Lbs MD
- 250-500 Lbs MD
- 500-1000 Lbs MD
- > 1000 Lbs MD
- Fuel Breaks

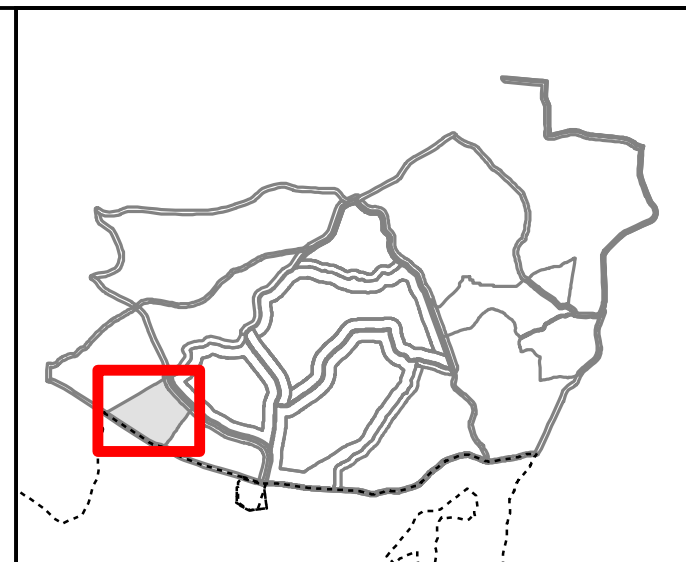
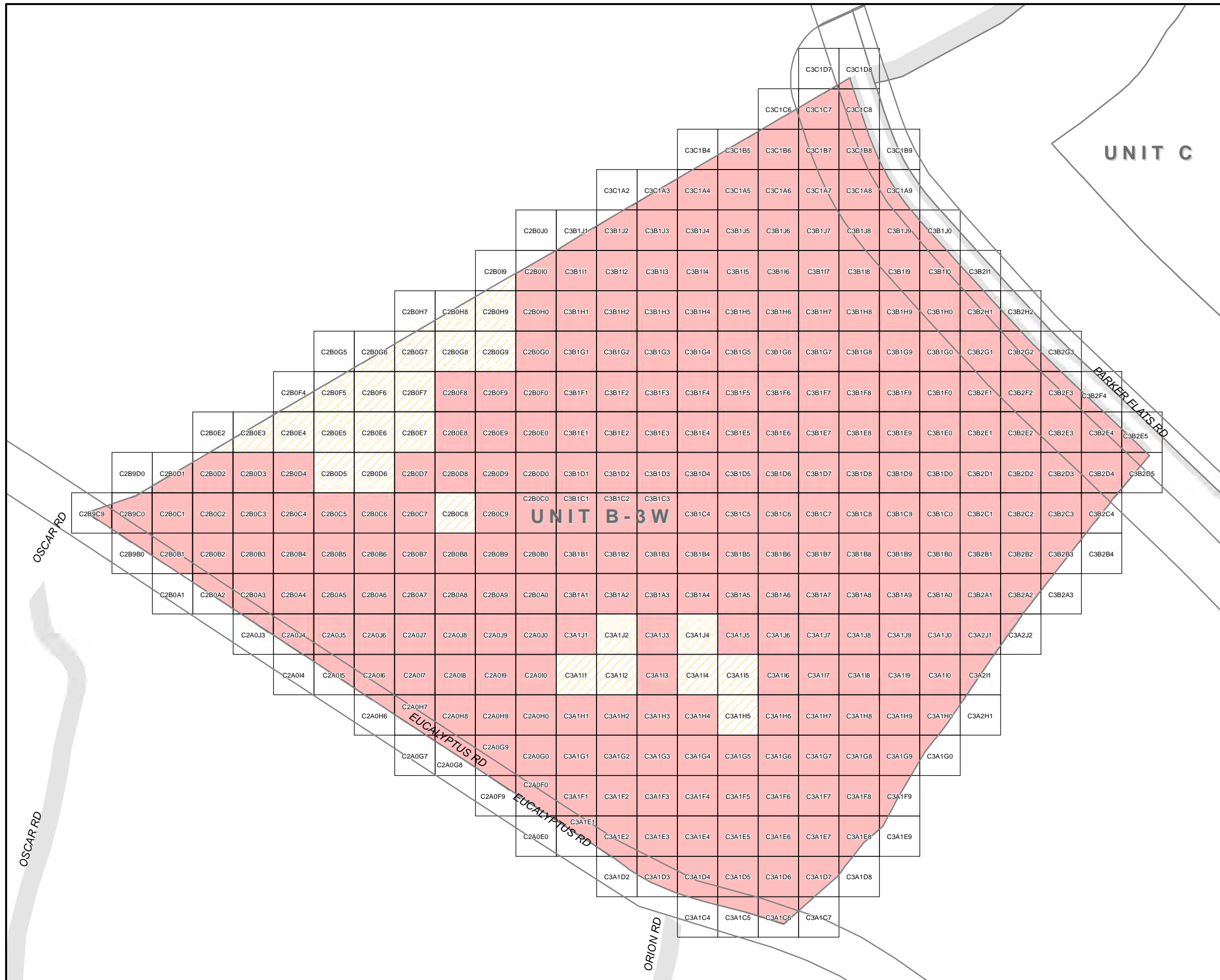
Operations Completed Through: 08/09/2018



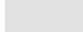

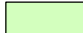


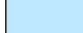
**U.S. ARMY CORPS OF ENGINEERS
SACRAMENTO DISTRICT**



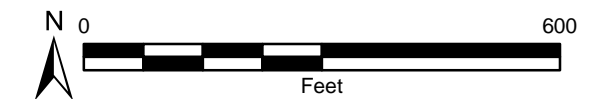
**FORMER FORT ORD
Unit A MD Denisty**



Legend

-  Fuel Breaks
-  To Be Surveyed
- DGM Survey Status**
-  Field Collection Complete
-  Data Processing Complete
-  Data QC Complete
-  Data QA Complete

Operations Completed Through: 08/09/2018

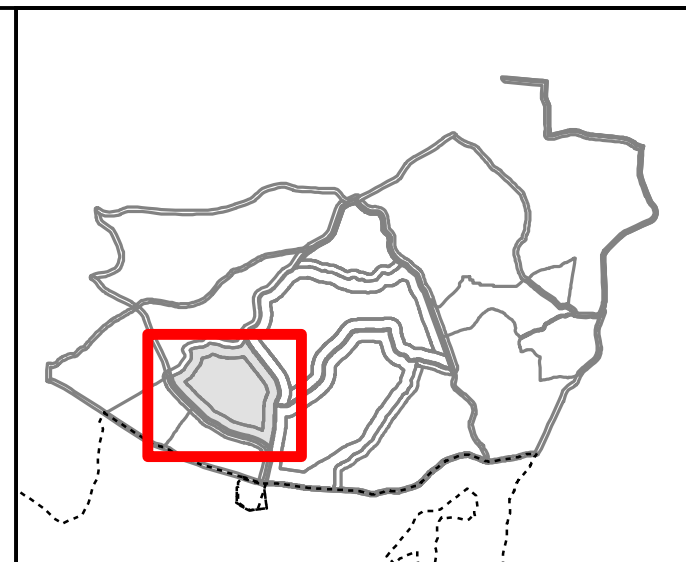
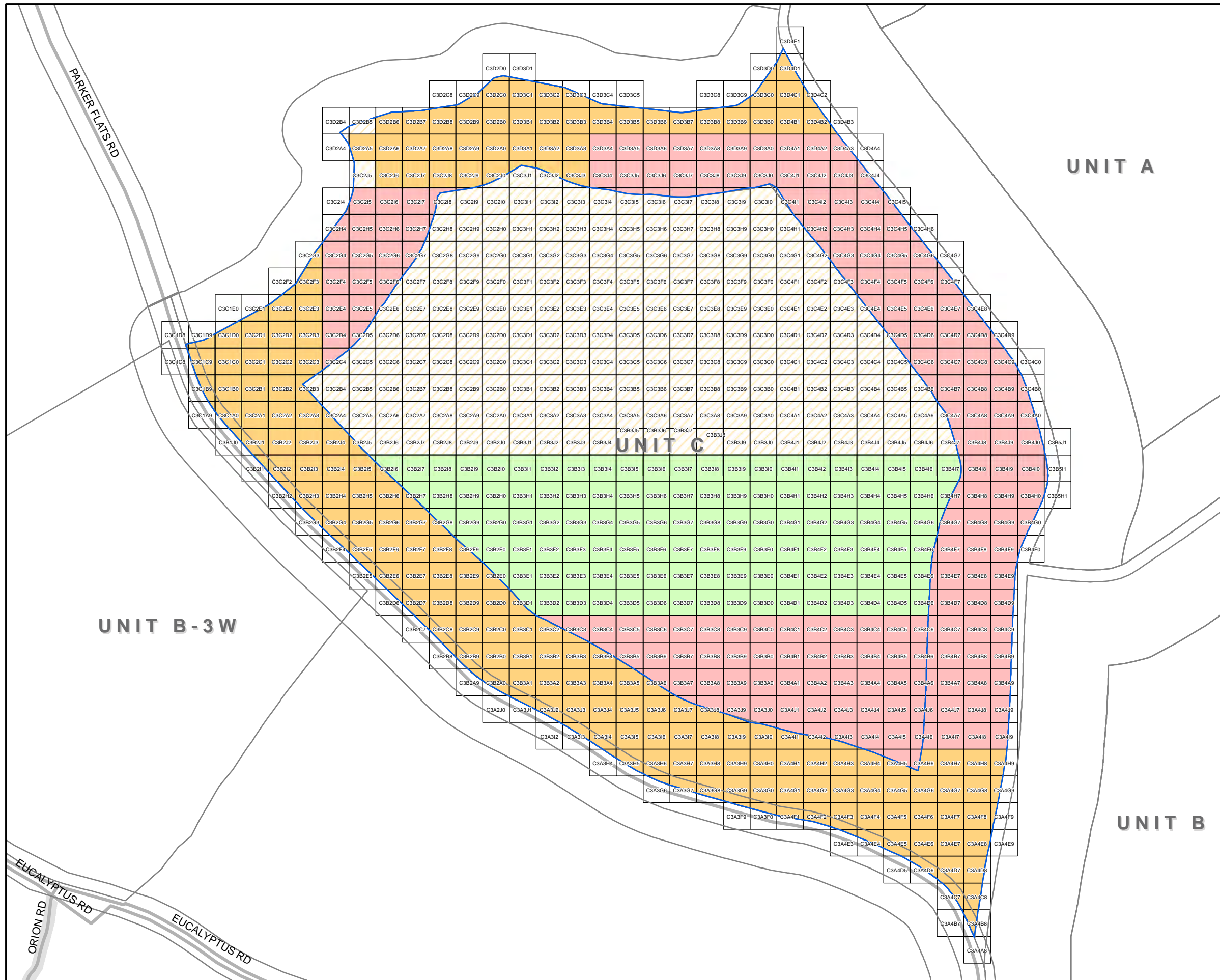


 **U.S. ARMY CORPS OF ENGINEERS**
SACRAMENTO DISTRICT

 **NAEVA** GEOPHYSICS INC.
Subsurface Geophysical Services

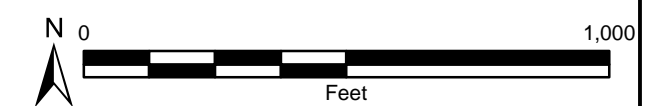
FORMER FORT ORD
Unit B-3W DGM Survey Status



Legend

- Fuel Breaks
- road_centerline
- Containment Line
- To Be Surveyed
- DGM Survey Status**
- Field Collection Complete
- Data Processing Complete
- Data QC Complete
- Data QA Complete

Operations Completed Through: 08/09/2018



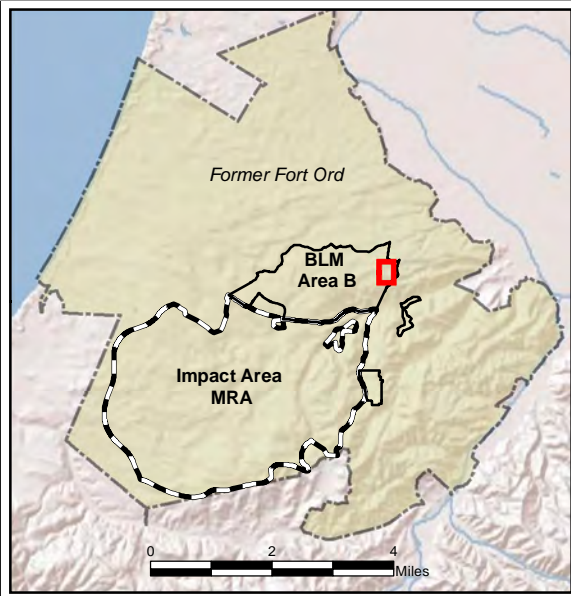
**U.S. ARMY CORPS OF ENGINEERS
SACRAMENTO DISTRICT**

KEMRON
ENVIRONMENTAL SERVICES

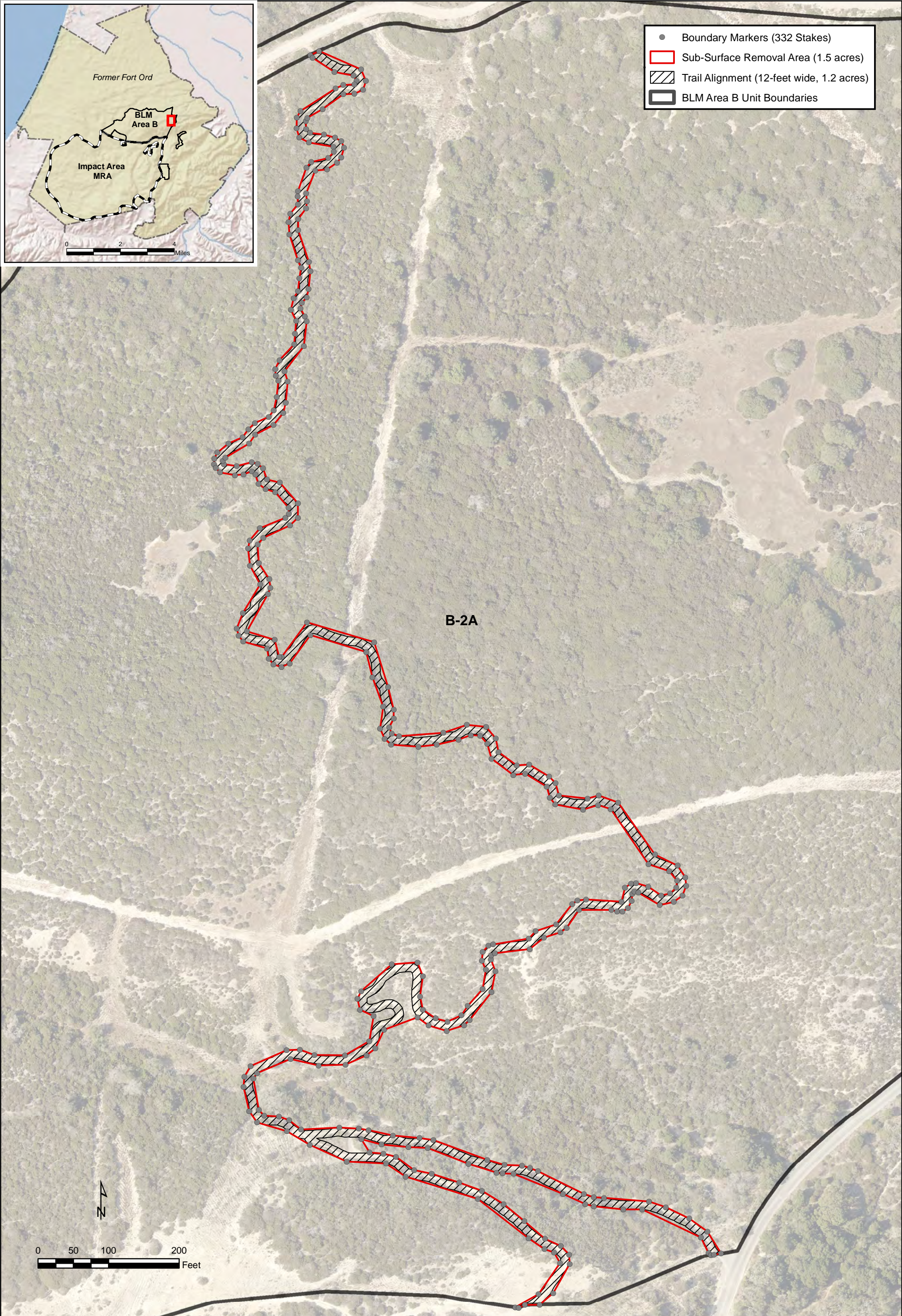
Gilbane

NAEVA GEOPHYSICS INC.
Subsurface Geophysical Services

**FORMER FORT ORD
Unit C DGM Survey Status**

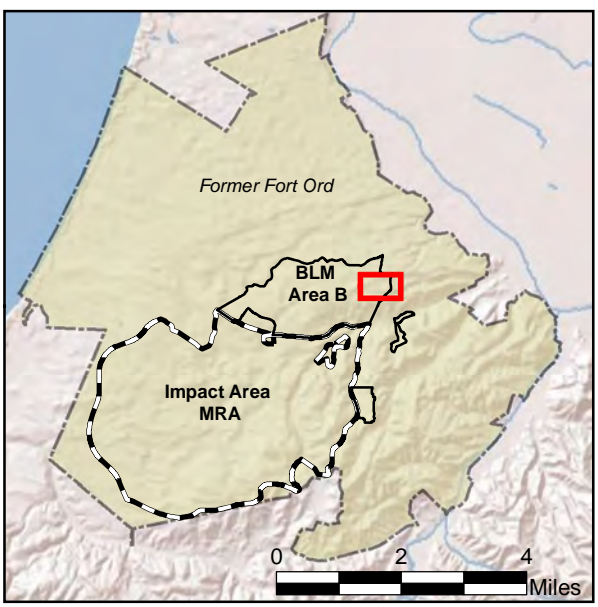
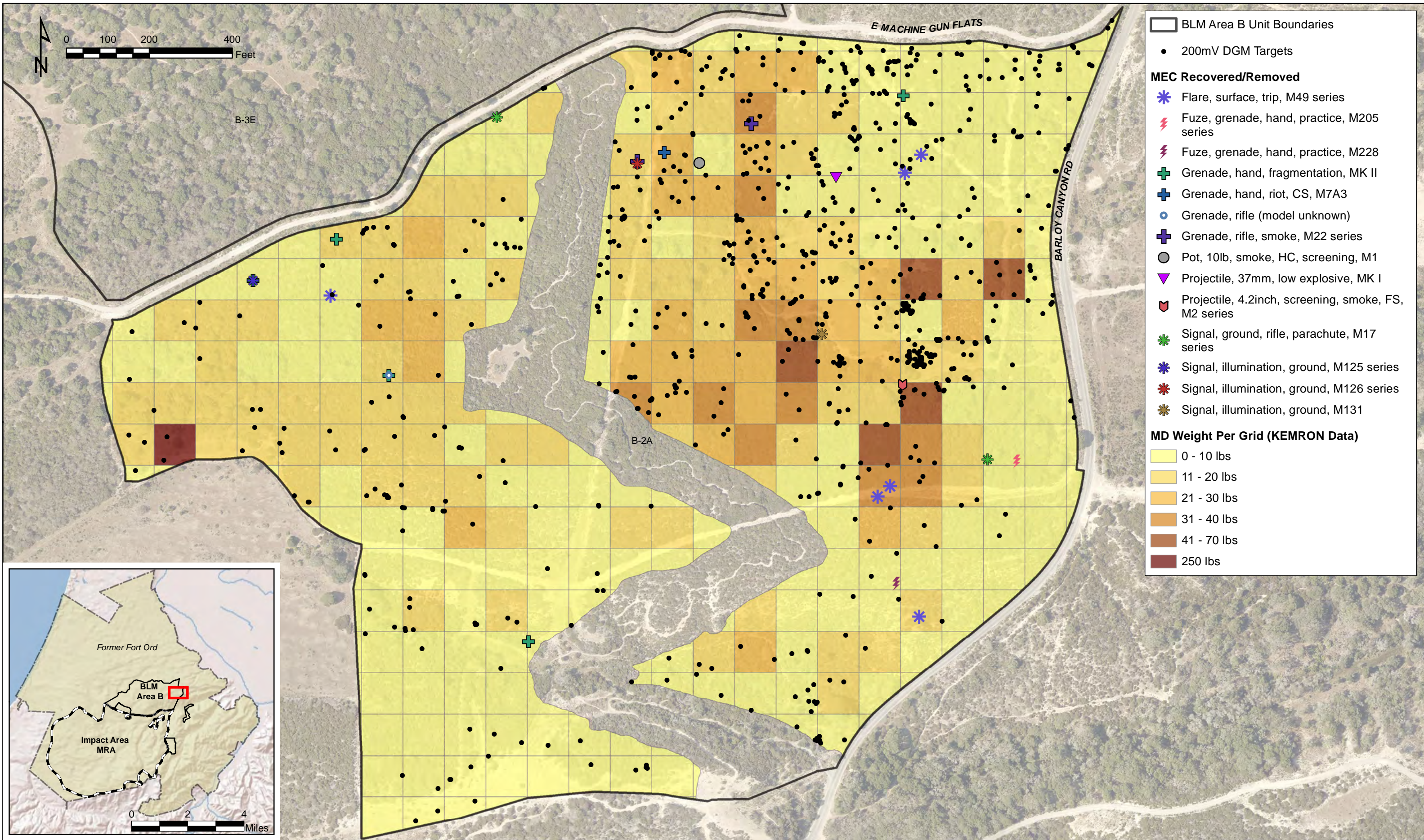


- Boundary Markers (332 Stakes)
- ▭ Sub-Surface Removal Area (1.5 acres)
- ▨ Trail Alignment (12-foot wide, 1.2 acres)
- ▭ BLM Area B Unit Boundaries



Unit B-2A
BLM Area B
Former Fort Ord, California

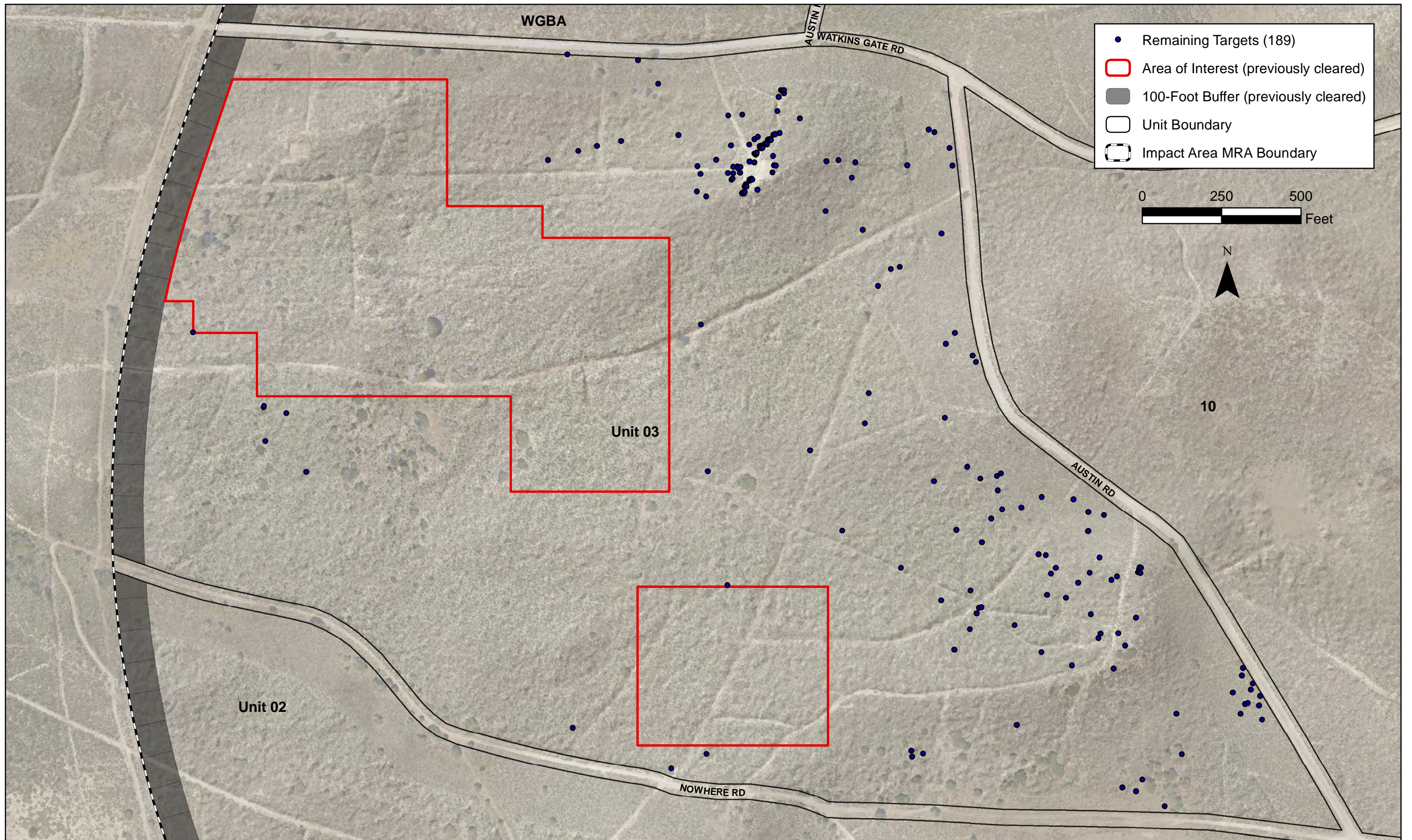
Figure 1
Trail 61 & Trail 62
Sub-Surface Removal Area



Unit B-2A
BLM Area B
Former Fort Ord, California

Figure 1
Munitions Debris Weight per Grid,
MEC Items, & DGM Targets



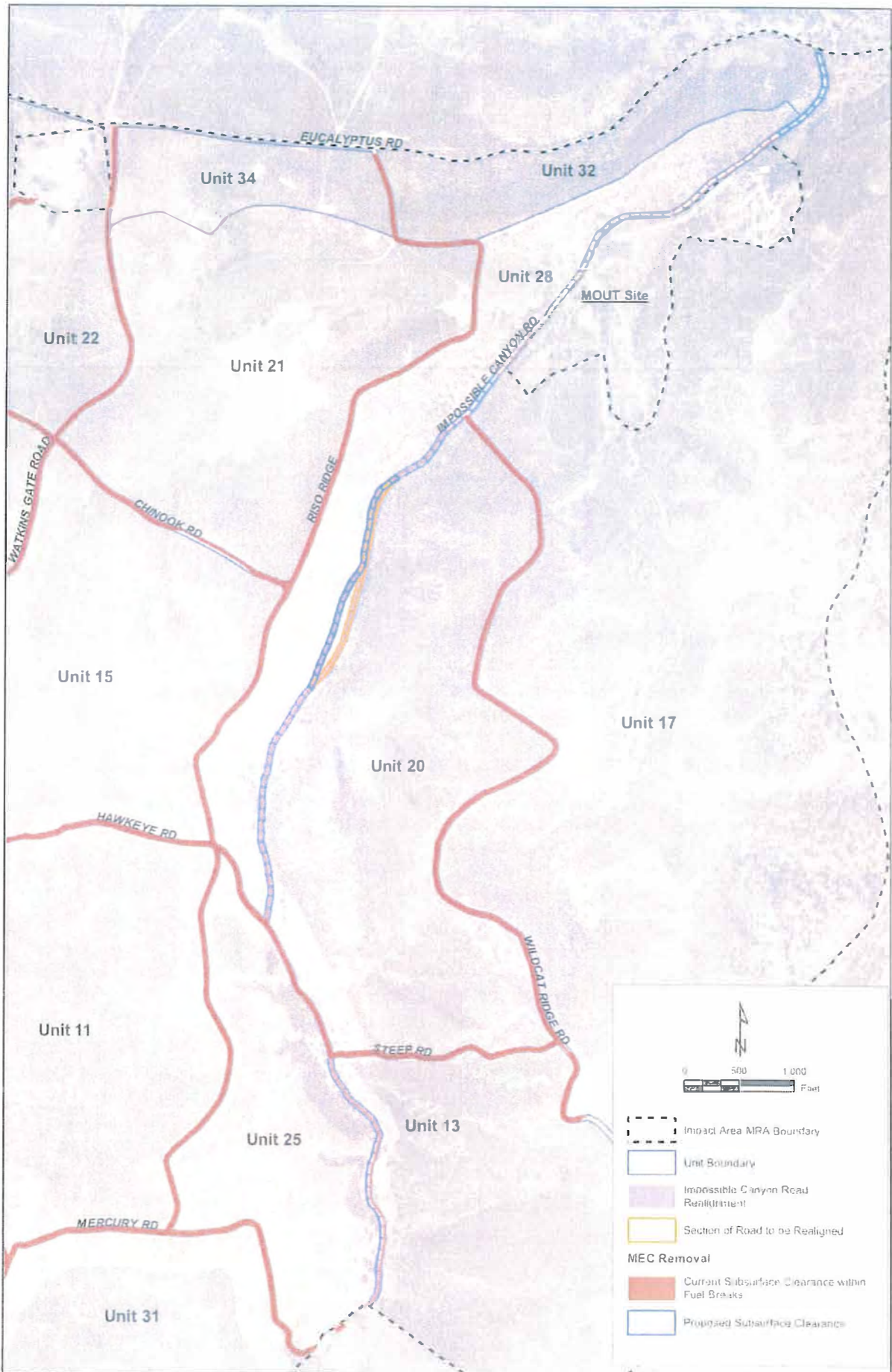




- AOI anomalies greater than 250mV (126 anomalies)
- ▲ 4-inch stokes mortar, screening smoke, FM
- ▲ 4-inch stokes mortar, smoke, WP
- ▲ 4-inch stokes mortar, smoke, hexachloroethane
- Livens projector, screening smoke, FM
- Elevation Countours (5 ft.)
- ▭ Area of Interest (36.4 acres)
- - - Impact Area MRA
- ▭ Unit 3 Boundary
- 100 Foot Buffer (not included as part of this scope)



Figure 1
 Unit 3 Area of Interest
 Stokes Mortar and Livens Projector Anomalies (to 12 inches bgs)



KEMRON
Infrastructure Services

Gilbane

Impossible Canyon Road Realignment
 Field Work Variance 14
 Fort Ord, California

Figure 1
 Impossible Canyon Road