

MR Status  
Fort Ord MR BCT  
12 September 2018

**BLM AREA B**

**Security measures and Outreach**

- The website and kiosks were updated with current trail closure information on 8/13.
- Notice and warning signs, trail closure fences, and boundary fences are in place around the ongoing work areas in units B, C, B-3W, B-3E, and B-2A.
- Boundary fences, notice and warning signs, and trail closure fences were installed around Unit A as burn prep activities continued.

**Vegetation Removal**

- Required mastication for 2018 prescribed burn in Unit 31 was completed in August.
- All mastication in Unit A containment lines (CL) is now complete. Additional manual vegetation removal continues in selected areas as requested by the burn team.
- Manual vegetation removal along Trail 62 12-ft trail footprint in Unit B-2A is complete.

**Surface removal**

- Surface MEC removal is complete in Unit B except for one grid.
- Surface MEC removal is nearing completion in Unit A CLs.
- Surface MEC removal in Unit B-2A is complete except for 11 acres that comprise the Trail 62 buffer.
- Surface MEC removal along the 12-foot trail footprint of Trail 62 in Unit B-2A, concurrent with analog subsurface MEC removal, is in progress.

**Digital Geophysical Mapping (DGM)**

- DGM in Unit C burn area is nearing completion.
- DGM in Unit B burn area is in progress.

**Subsurface MEC Removal and Burn Prep Activities**

- Construction of new temporary fuel break road on the north side of Unit A is complete.
- Analog subsurface MEC removal on the 12-ft wide Trail 62 footprint in Unit B-2A is in progress concurrently with surface MEC removal.
- Subsurface MEC removal was started in the Unit B-3W 100-foot buffer.
- Planning for subsurface MEC removal on BLM Area B trails is underway.
- During surface MEC removal in Unit B-2A, a 4.2-inch mortar with unknown filler was discovered and later determined to be FS-smoke. To address possible additional unknown filler items that could be present in Unit B-2A, investigation of DGM targets with the potential to be 4.2-in mortars was started on 8/7 using the Metal Mapper 2x2 to cue the anomalies and develop a target dig list. Intrusive investigation of targets of interest is expected to begin in September.

## **IMPACT AREA**

### FIELD ACTIVITIES

#### **Unit 3 Livens/Stokes Investigation**

- Remainder of identified anomalies outside of original area of interest in previous Unit 3 Livens/Stokes investigation of potential unknown filler items will be excavated.
- Reacquisition of targets is now complete and excavation is expected to be conducted concurrently or subsequent to the Unit B-2A 4.2-inch investigation in BLM Area B.

#### **Impossible Canyon Road and Wildcat Ridge Road Fuel Break Work**

- Mechanical vegetation removal along approximately 7.3 acres of fuel breaks designated for realignment or additional DGM was completed. Approximately 6.7 acres of manual vegetation removal for this activity continues.
- DGM and subsurface MEC removal activities will begin following vegetation removal.

#### **Unit 23 Risk Reduction**

- Unit 23 Risk Reduction MM 2x2 cued survey of 1,279 targets was completed on 7/25 and a target dig list has been finalized.
- Intrusive investigation of the anomalies is expected to begin in late September.

#### **Fuel Breaks QC Digs**

- Additional verification fieldwork in specific segments of the fuel breaks is scheduled to begin in September.

#### **Subsurface MEC Removal and Restoration Activities**

- Watkins Gate Burn Area (WGBA) mortar pits and Austin Road latrine depression restoration projects are planned to begin in late September.
- Work to remove up to 32 buildings in Impact Area units and Unit B-3W is expected to proceed following asbestos and lead-based paint sampling. This work will include Iron Triangle cleanup and OU2 landfill activities.

#### **Target/Debris Disposal**

- One demolition operation for 102 items was conducted on 8/29.
- MD scrap sorting began on 8/29 and is now caught up. Additional MD scrap sorting will remain on hold pending additional munitions debris accumulation.

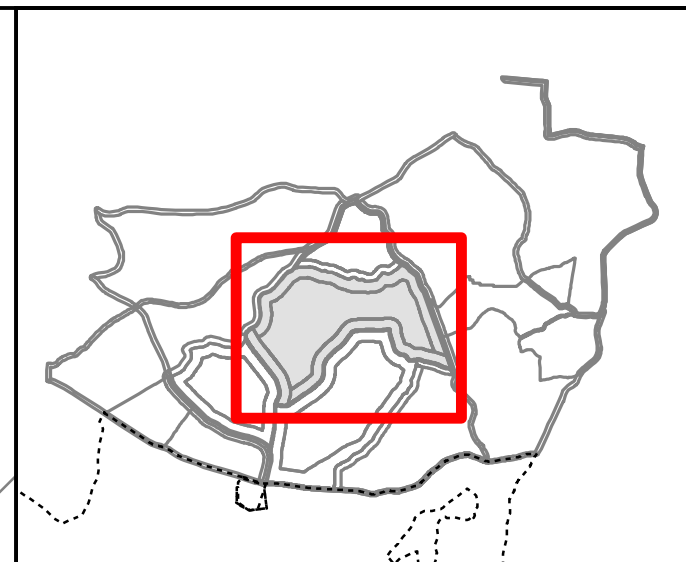
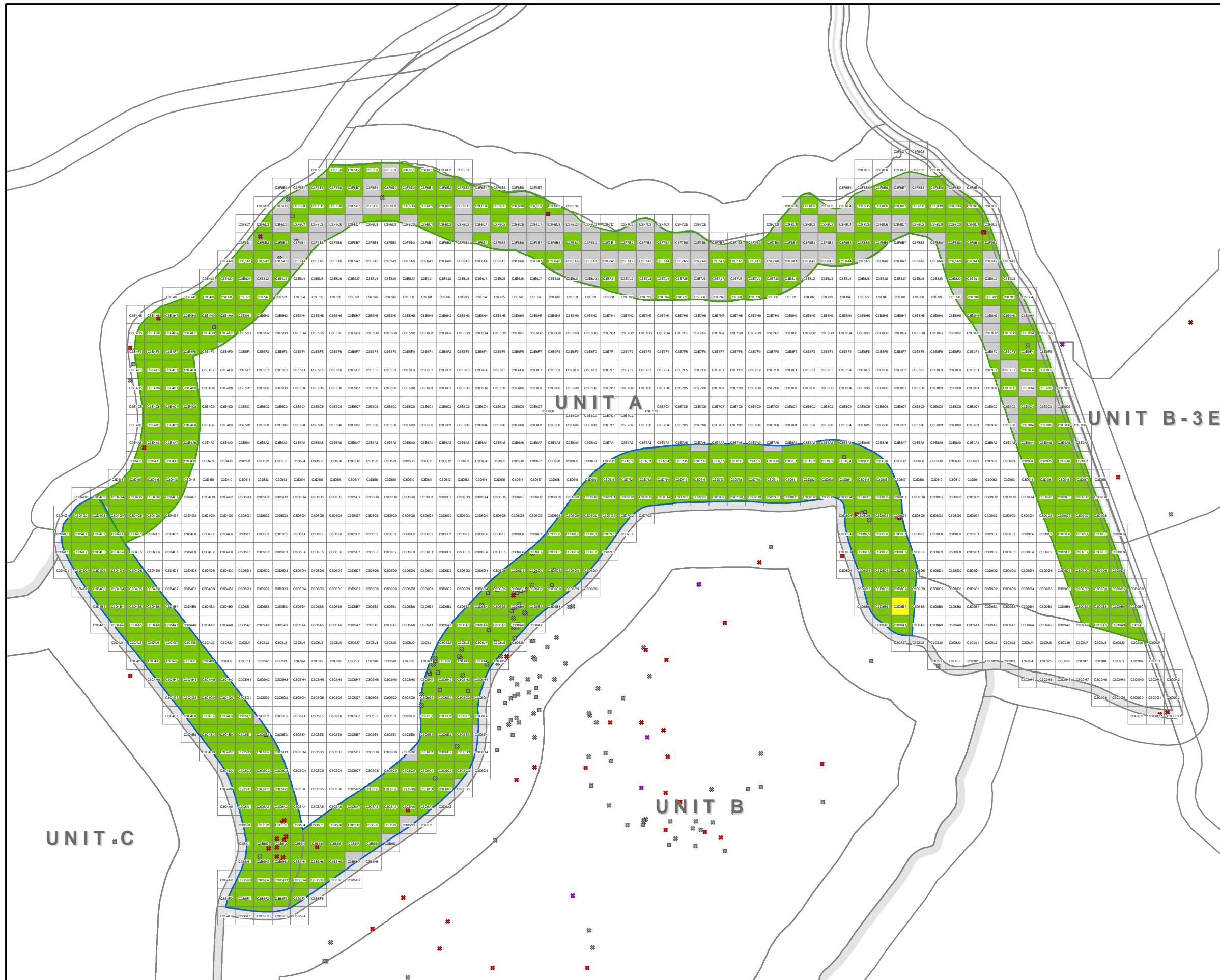
### OTHER ACTIVITIES

#### **Vernal Pool Anomaly Investigation**

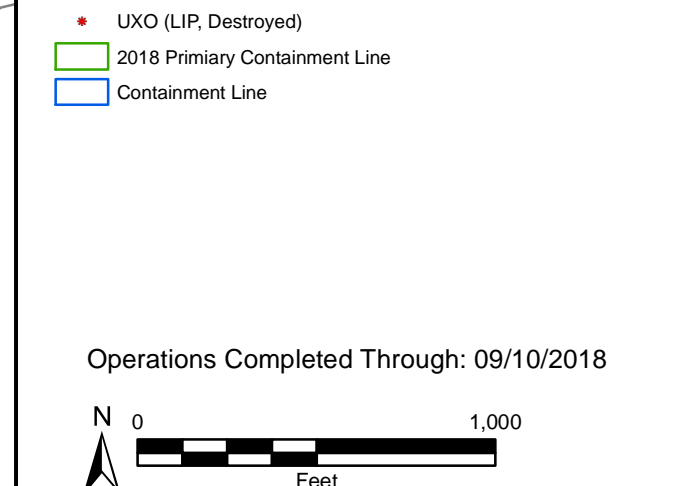
- A target list was finalized with 1,007 targets. Cueing of all targets with the Metal Mapper 2x2 was completed on 9/5.
- An approach to perform target excavation while minimizing impacts to the ponds was provided by the BRAC biologist and special equipment to implement the excavation has been ordered.

## **MMRP SITE SECURITY PROGRAM**

- Trespass Incident Reports
  - Last 28 days (ending 9/10/2018): 0
  - Year to Date: 7
- Munitions Incident Reports
  - Last 28 days (ending 9/10/2018): 0
  - Year to Date: 8
- Community Education Participants– Year to Date: 265
- Munitions Recognition and Safety Training Participants – Year to Date: 161



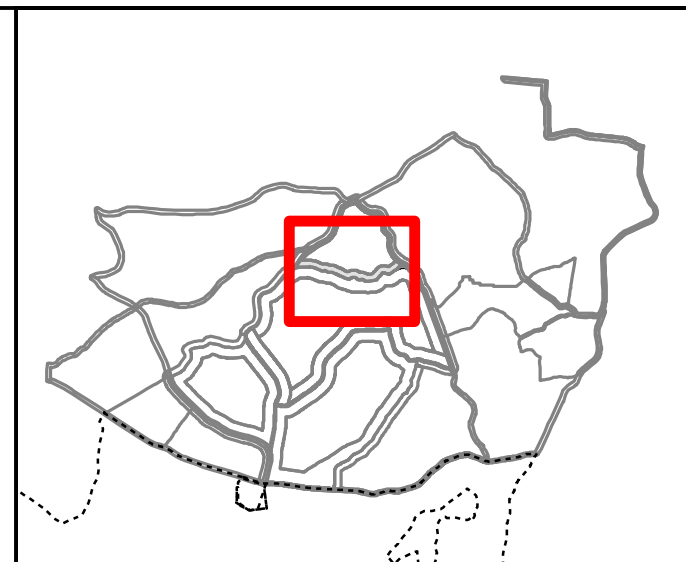
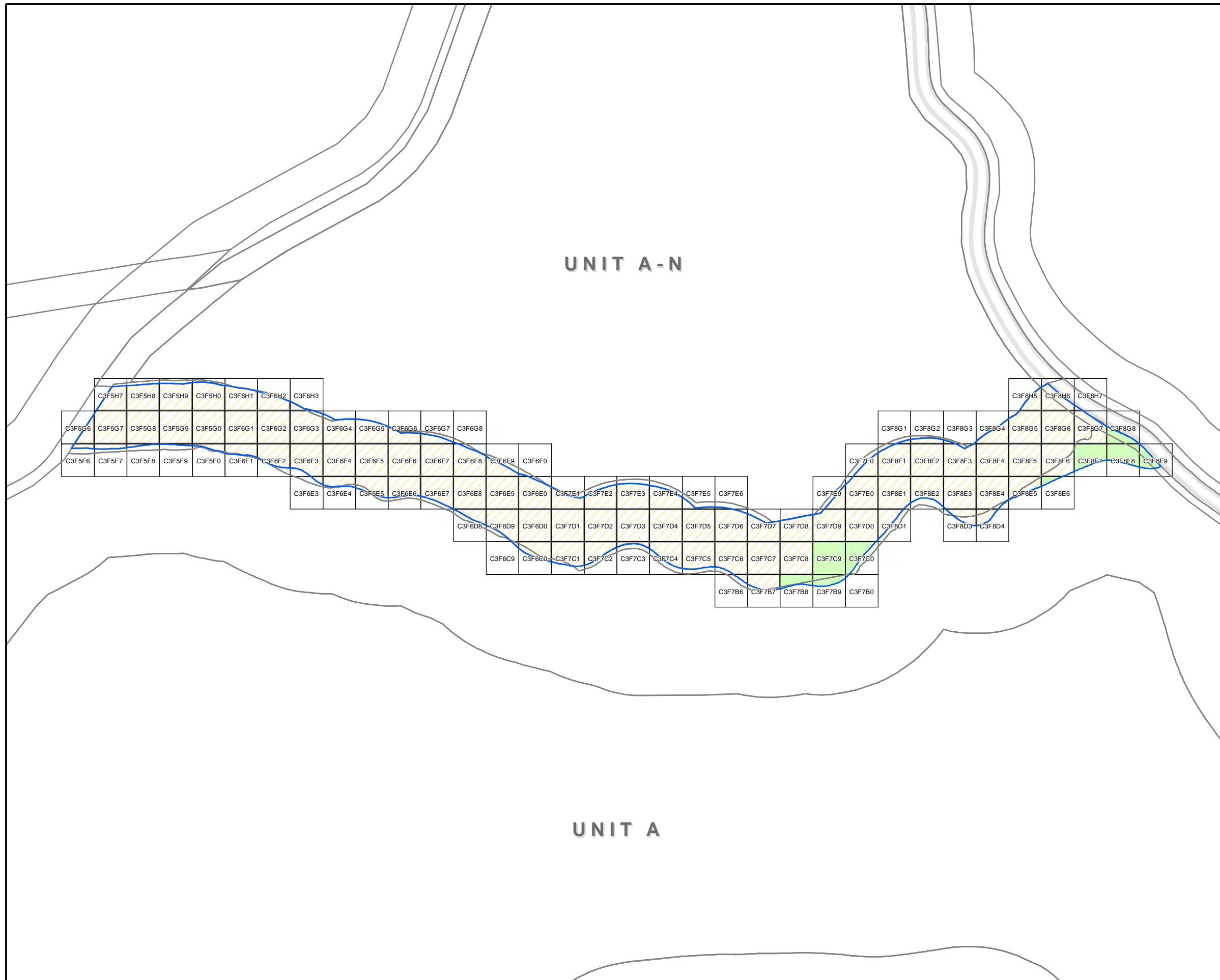
- Legend**
- DMM (CP)
  - DMM (LIP)
  - ✖ DMM (CP, Destroyed)
  - ✖ DMM (LIP, Destroyed)
  - MD, LIP
  - ✖ Expended (Destroyed)
  - ✖ Live (Destroyed)
  - MPPEH (CP)
  - MPPEH (LIP)
  - ✖ UXO (LIP, Destroyed)
  - ▭ Burn Unit Outline
  - ▭ No MD
  - ▭ < 75 Lbs MD
  - ▭ 75-250 Lbs MD
  - ▭ 250-500 Lbs MD
  - ▭ 500-1000 Lbs MD
  - ▭ > 1000 Lbs MD
  - ▭ Fuel Breaks
  - ▭ Surface Removal Planned



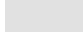




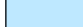
U.S. ARMY CORPS OF ENGINEERS  
SACRAMENTO DISTRICT

NAEVA GEOPHYSICS INC.  
Seismicity Geophysical Services

FORMER FORT ORD  
Unit A MD Denisty



### Legend

-  Fuel Breaks
-  Secondary Containment Line
- Surface MEC Removal Status**
-  To Be Surveyed
-  Surface Field Complete
-  Surface QC Complete
-  Surface QA Complete

Operations Completed Through: 09/10/2018



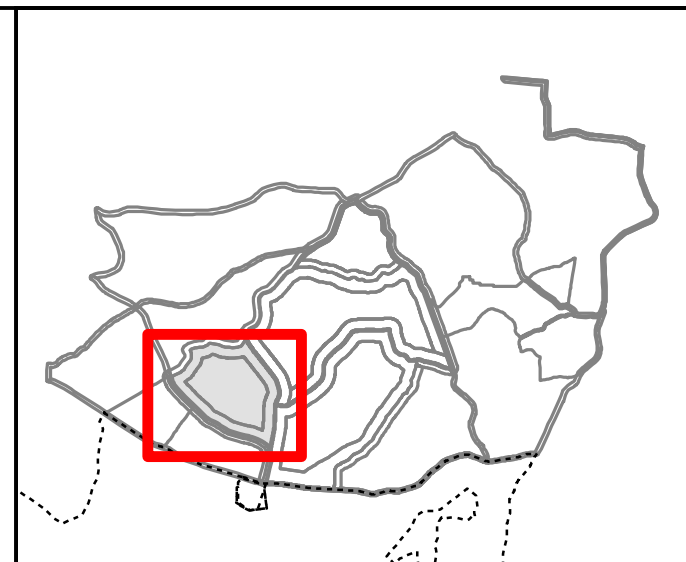
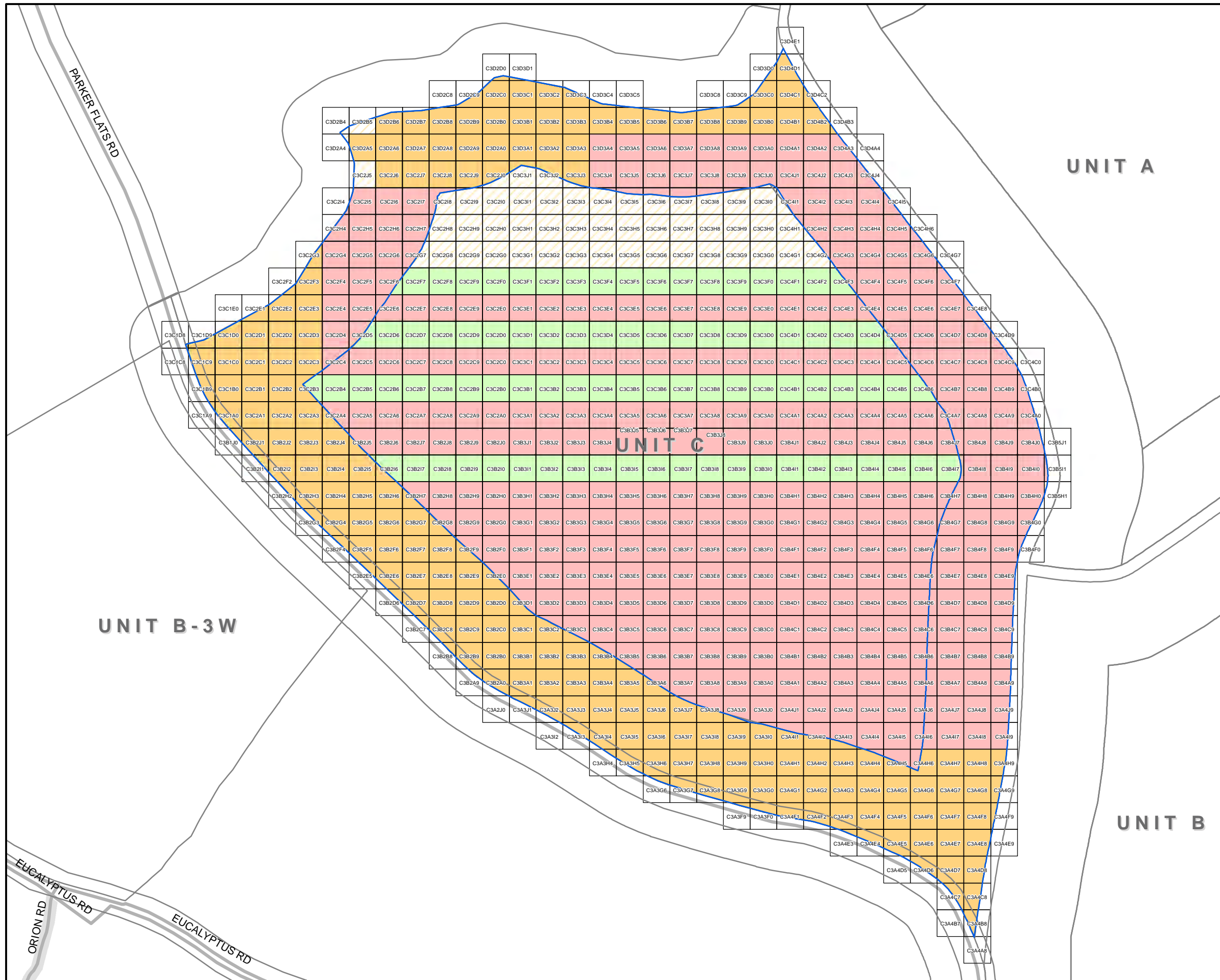
 **U.S. ARMY CORPS OF ENGINEERS**  
SACRAMENTO DISTRICT

**Kemron** **Gilbane**  
ENVIRONMENTAL SERVICES

**NAEVA** GEOPHYSICS INC.  
Subsurface Geophysical Services

**FORMER FORT ORD**  
Unit A-N Surface MEC Removal Status

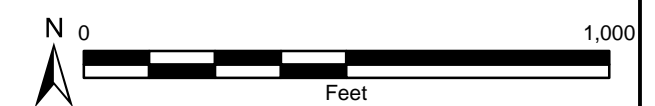




**Legend**

- Fuel Breaks
- road\_centerline
- Containment Line
- To Be Surveyed
- DGM Survey Status**
- Field Collection Complete
- Data Processing Complete
- Data QC Complete
- Data QA Complete

Operations Completed Through: 09/10/2018

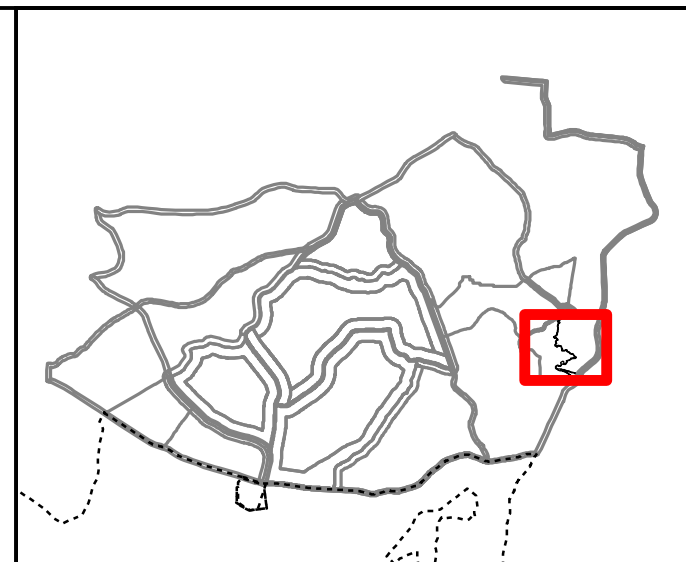
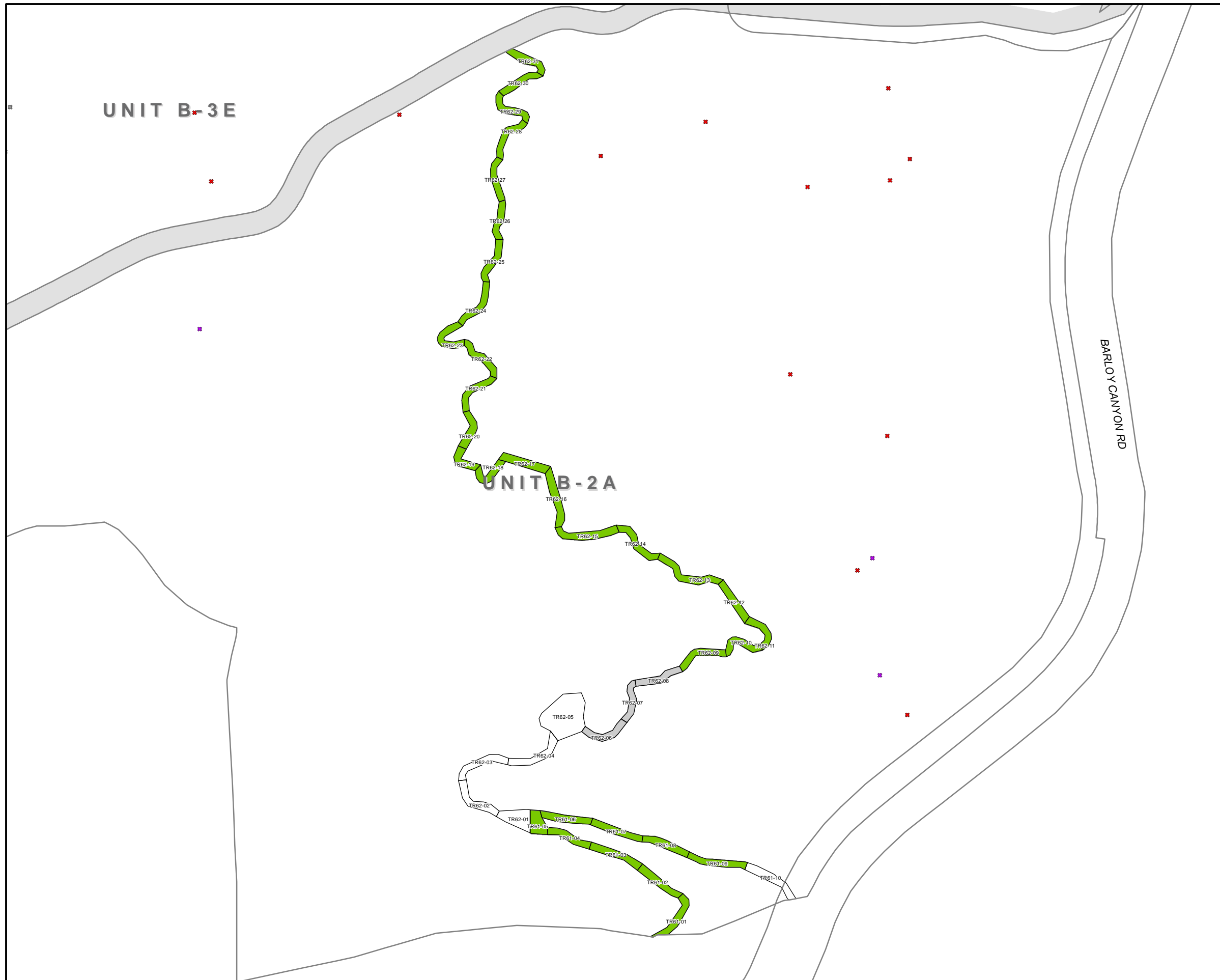


**U.S. ARMY CORPS OF ENGINEERS  
SACRAMENTO DISTRICT**

**Kemron** ENVIRONMENTAL SERVICES **Gilbane**

**NAEVA** GEOPHYSICS INC.  
Subsurface Geophysical Services

**FORMER FORT ORD  
Unit C DGM Survey Status**



**Legend**

- DMM (CP)
- DMM (LIP)
- ✱ DMM (CP, Destroyed)
- ✱ DMM (LIP, Destroyed)
- MD, LIP
- ✱ Expended (Destroyed)
- ✱ Live (Destroyed)
- MPPEH (CP)
- MPPEH (LIP)
- ✱ UXO (LIP, Destroyed)
- ▭ Fuel Breaks
- ▭ No MD
- ▭ < 75 Lbs MD
- ▭ 75-250 Lbs MD
- ▭ 250-500 Lbs MD
- ▭ 500-1000 Lbs MD
- ▭ > 1000 Lbs MD

Operations Completed Through: 09/10/2018

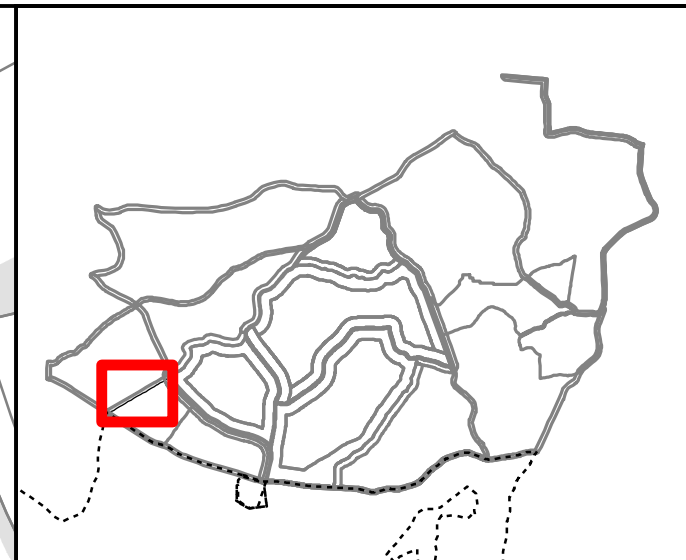
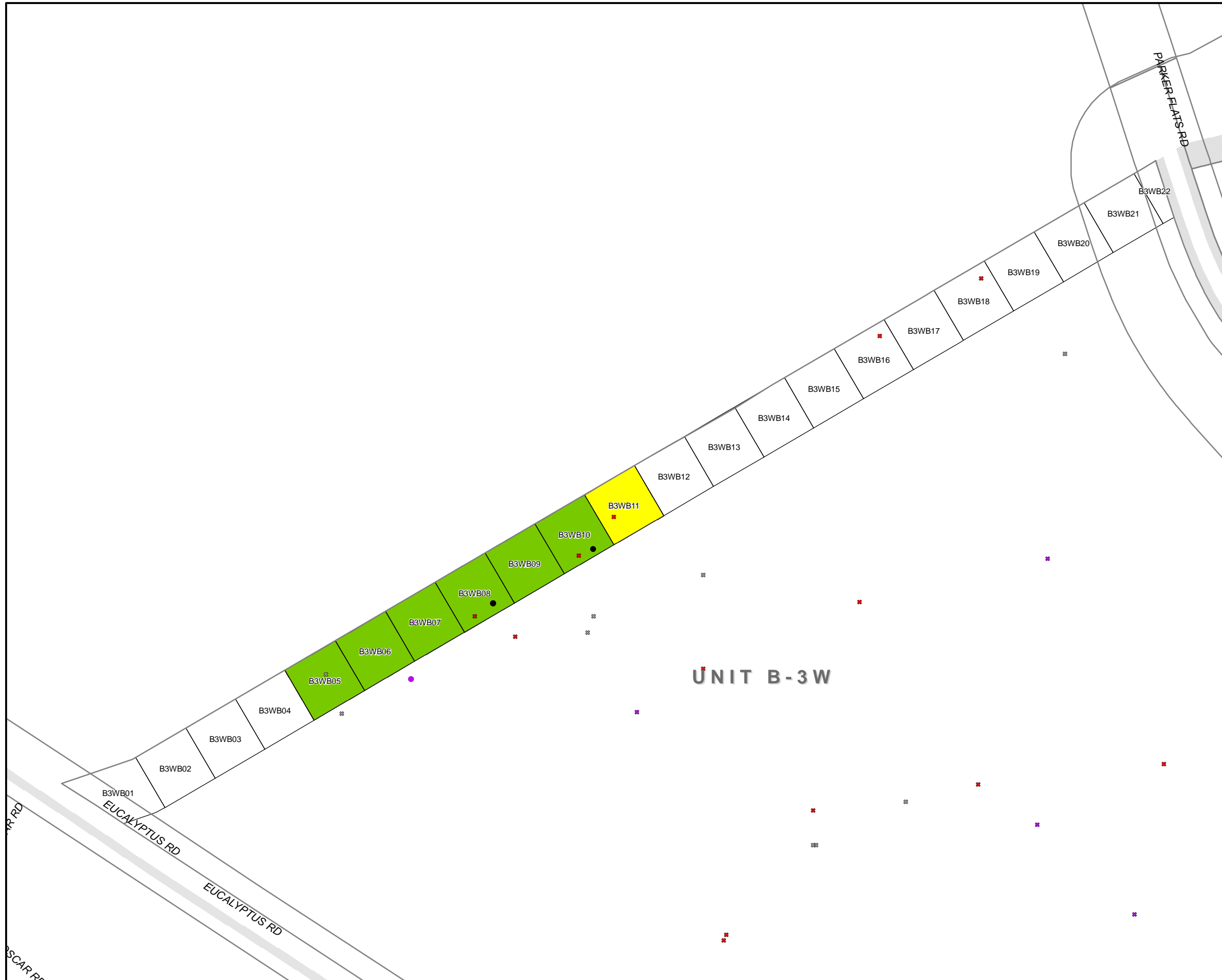


**U.S. ARMY CORPS OF ENGINEERS**  
SACRAMENTO DISTRICT

**Kemron** Environmental Services **Gilbane**

**NAEVA** GEOPHYSICS INC.  
Subsurface Geophysical Services

**FORMER FORT ORD**  
Unit B-2A Trail 61 and 62 Grids  
Mag and Dig Ops MD Density



**Legend**

- DMM (CP)
- DMM (LIP)
- ✱ DMM (CP, Destroyed)
- ✱ DMM (LIP, Destroyed)
- MD, LIP
- ✱ Expended (Destroyed)
- ✱ Live (Destroyed)
- MPPEH (CP)
- MPPEH (LIP)
- ✱ UXO (LIP, Destroyed)
- ▭ Fuel Breaks
- ▭ No MD
- ▭ < 75 Lbs MD
- ▭ 75-250 Lbs MD
- ▭ 250-500 Lbs MD
- ▭ 500-1000 Lbs MD
- ▭ > 1000 Lbs MD

Operations Completed Through: 09/10/2018



**U.S. ARMY CORPS OF ENGINEERS  
SACRAMENTO DISTRICT**

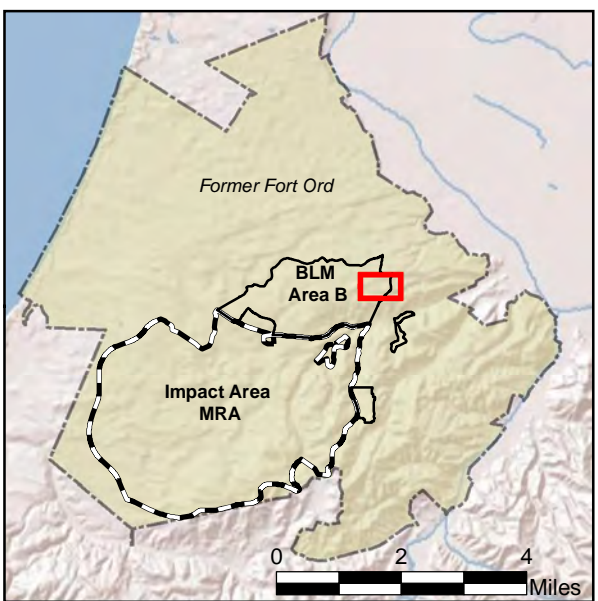
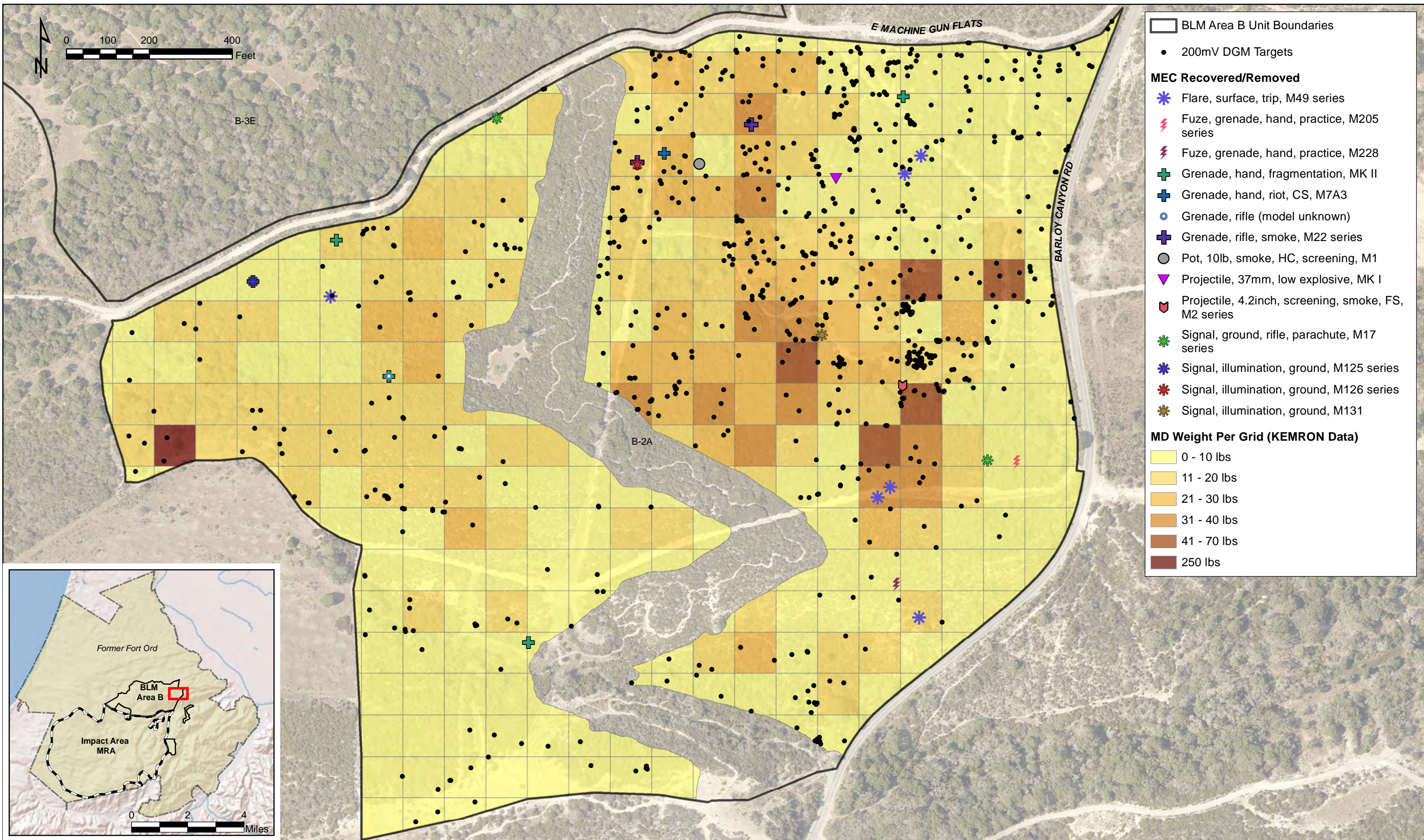
**Kemron**  
ENVIRONMENTAL SERVICES

**Gilbane**

**NAEVA** GEOPHYSICS INC.  
Subsurface Geophysical Services

**FORMER FORT ORD  
Unit B-3W 100ft Buffer  
Mag and Dig Ops MD Density**





Unit B-2A  
BLM Area B  
Former Fort Ord, California

**Figure 1**  
Munitions Debris Weight per Grid,  
MEC Items, & DGM Targets





