

MR Status
Fort Ord MR BCT
19 June 2019

BLM AREA B

Security Measures and Outreach

- The website and kiosks were updated with current trail closure information on 4/4/2019.
- Notice and warning signs, trail closure fences, and boundary fences are in place around Units B and B-2A. Trails within Unit A are closed.
- Evaluation is in progress to reopen trails in Unit B-2A for public access.
- Roads will be subject to temporary closure during subsurface removal operations.

Digital Geophysical Mapping (DGM)

- DGM in Unit B is 80% complete as of 6/13. Data collection was temporarily suspended on 2/6 due to wet conditions; restarted 5/13.

Subsurface MEC Removal

- All planned subsurface removals have been completed in:
 - Units B-3E and B-3E-NE
 - Units B-3W and C
- Subsurface MEC removal on the 12-ft wide trail footprints has been completed on:
 - Unit B-2A: Trails 61/62
 - Unit A: Trail 69, 67, 68, 65 and 66
- Subsurface MEC removal on the 12-ft wide trail footprints is planned or in progress on:
 - Unit B: (following completion of DGM)
- Subsurface removal on additional road segments to be scheduled.
- Intrusive investigation in Unit B-2A for potential for unknown filler items: Intrusive investigation of 54 selected anomalies (within the buffer) began 4/22 and completed 5/8. Several DGM data gaps (within the unit) (including the pond area) were investigated with person-portable EM-61 in analog mode.
- Subsurface removal is planned on segments of an old Army road in Unit B-2A to support future restoration activities by BLM.

Other Activities

- To support restoration of abandoned sections of Trail 70 (Unit C) by BLM, an underground cable was removed. Supplemental DGM was conducted. Anomaly targets will be intrusively investigated.

IMPACT AREA

FIELD ACTIVITIES

Impossible Canyon Road and Wildcat Ridge Road Fuel Break Work

- Intrusive investigation status as of 6/13: all 2,074 complete on Impossible Canyon Road and all 41 on Wildcat Ridge Road.

Fuel Breaks Additional Verification

- The Metal Mapper (MM) 2x2 dynamic survey was conducted from 10/22 to 4/16 (25.5 acres).
- 437 preliminary cued targets in 3 road grids were previously excavated (completed 1/10). This information will be used to refine the classification process.
- The MM 2x2 cued survey is complete in 52% of the work area as of 6/13. As of 6/13, 5,090 cued targets have been identified for intrusive investigation; 2,293 have been investigated.

Range 48 Northern Portion Near-surface MEC Removal

- Near-surface MEC removal (up to 6 inches in depth): 25 of 148 grids were completed from 1/15 to 2/28. Fieldwork was temporarily suspended due to habitat conservation requirements. Work resumed 6/12. Additional 5 grids were completed through 6/13. DGM will also be conducted.

Target/Debris Disposal

- In-place demolition operations were conducted on 6/5 and 6/13.
- Eight off-site shipments of MD have been completed to date.

Annual Surface Monitoring

- Monitoring began 4/8.

OTHER ACTIVITIES

Impact Area North Perimeter Fence Construction

- Site preparation was completed in April. Fence construction began 5/28.

MMRP SITE SECURITY PROGRAM

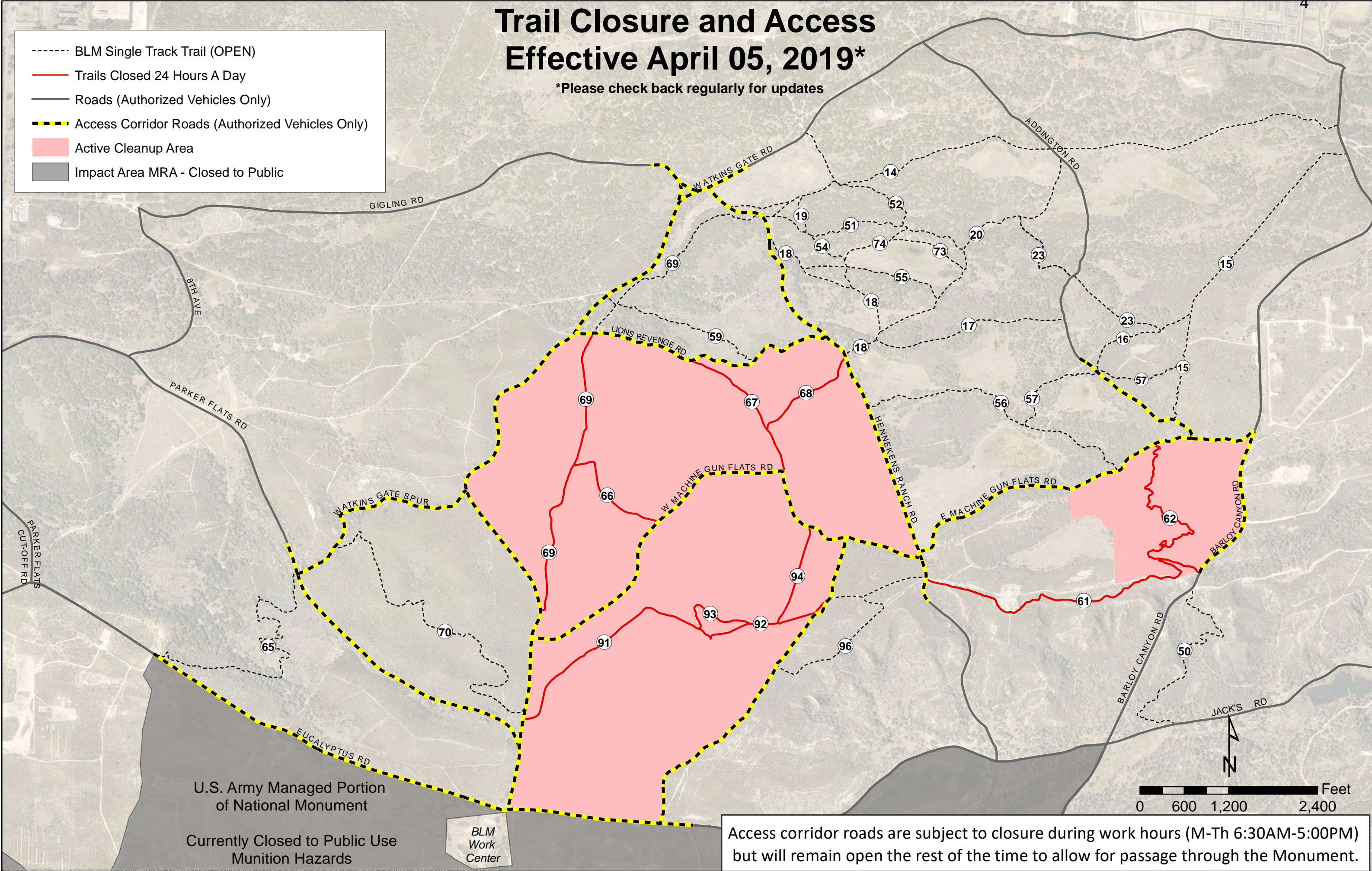
Update for 19 June 2019 BCT

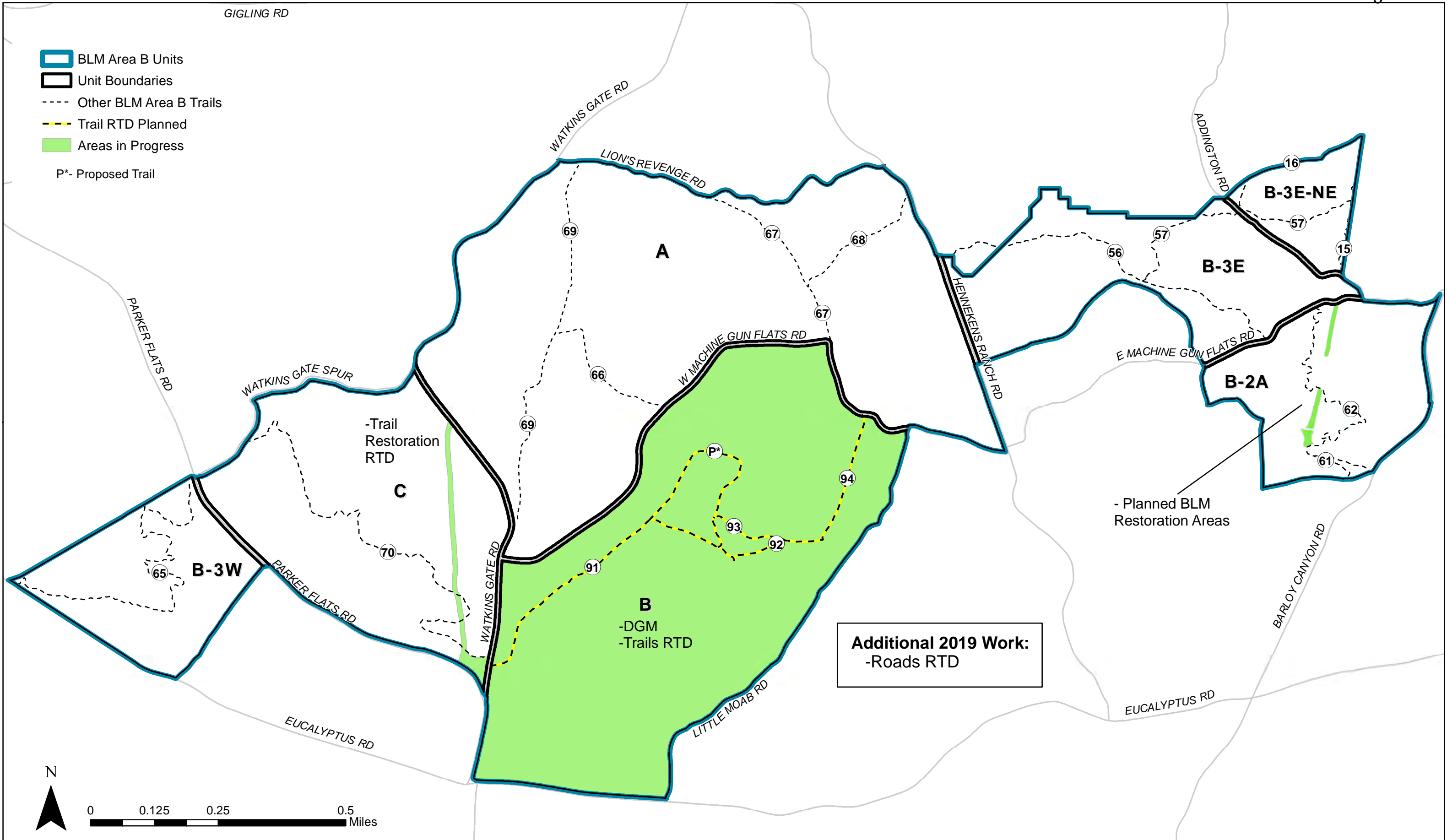
- Trespass Incident Reports
 - Last 31 days (5/14/2019 – 6/13/2019): 0
 - 7 May - a homeless encampment was discovered in fenced Impact Area near Bitter Gate. BRAC is coordinating the cleanup of the illegal encampment.
 - 9 May – a vehicle was found crashed into the Impact Area fence on Eucalyptus Road near the Impossible Canyon (MOUT) Gate. BRAC is coordinating the cleanup of petroleum-contaminated soil following a vehicle collision.
 - Year to Date: 22
- Munitions Incident Reports
 - Last 31 days (5/14/2019 – 6/13/2019): 0
 - Year to Date: 3
- Community Education Participants– Year to Date: 0
- Munitions Recognition and Safety Training Participants – Year to Date: 173

Trail Closure and Access Effective April 05, 2019*

*Please check back regularly for updates

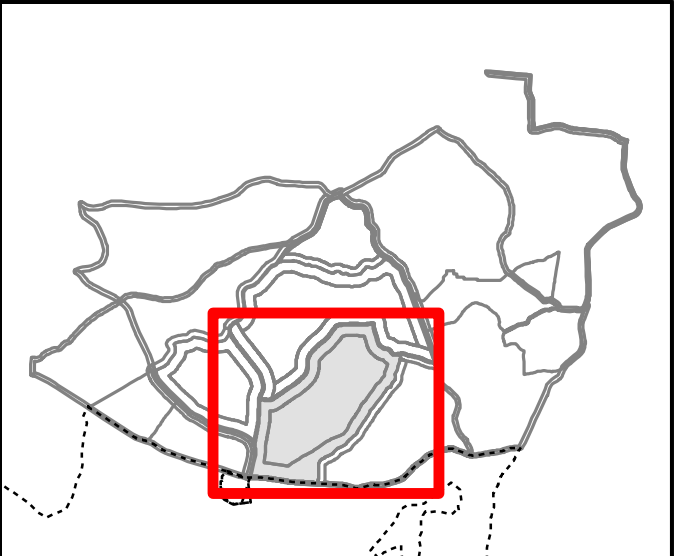
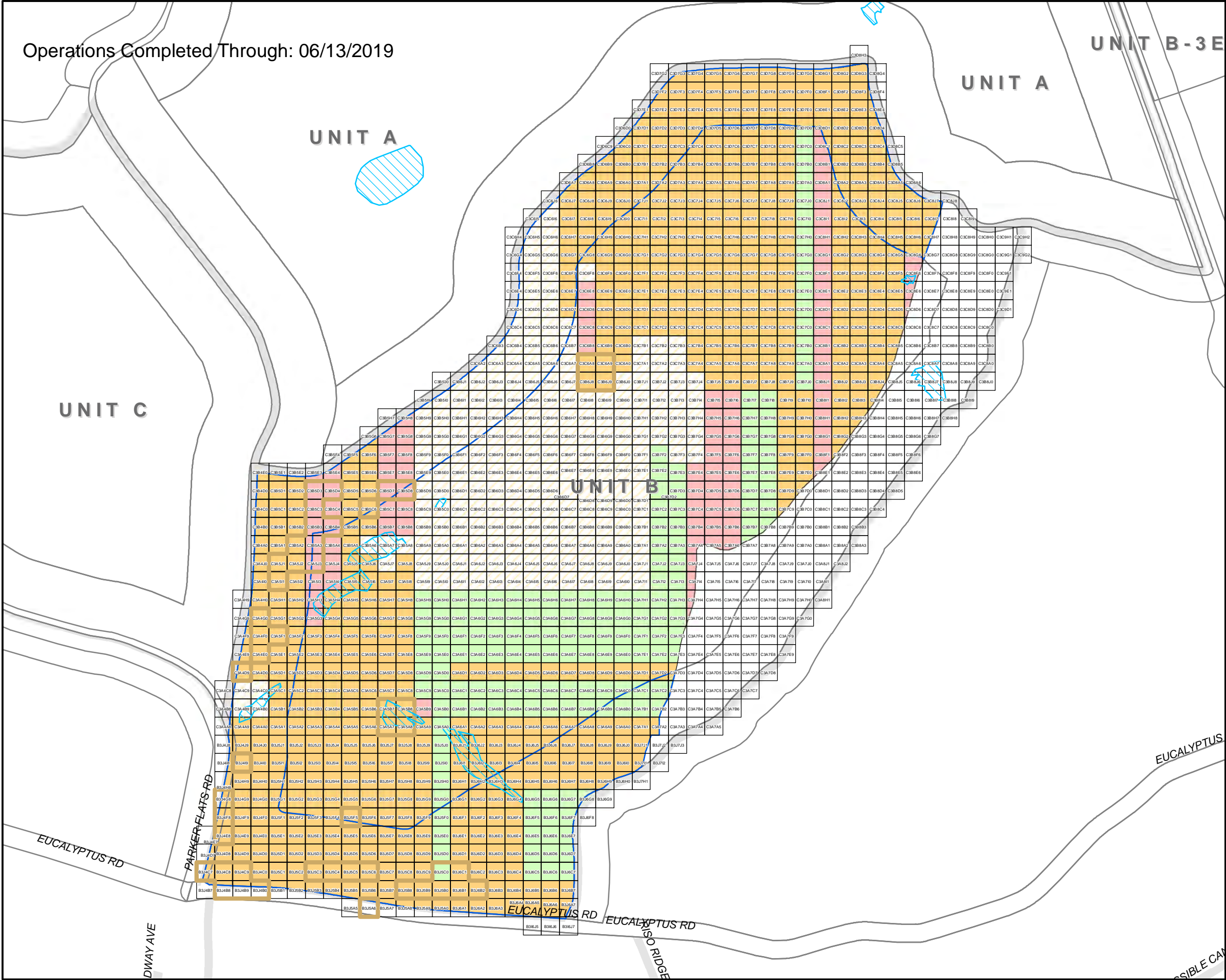
- BLM Single Track Trail (OPEN)
- Trails Closed 24 Hours A Day
- Roads (Authorized Vehicles Only)
- Access Corridor Roads (Authorized Vehicles Only)
- Active Cleanup Area
- Impact Area MRA - Closed to Public





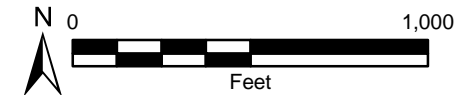
BLM Area B
FORMER FORT ORD
MONTEREY COUNTY, CALIFORNIA

Figure 2
Remaining
2019 Field Activities
as of June 17, 2019



Legend

- Vernal Ponds
- HMP Grids
- Fuel Breaks
- Containment Line
- DGM Survey Status**
 - To Be Surveyed
 - Field Collection Complete
 - Data Processing Complete
 - Data QC Complete
 - Data QA Complete

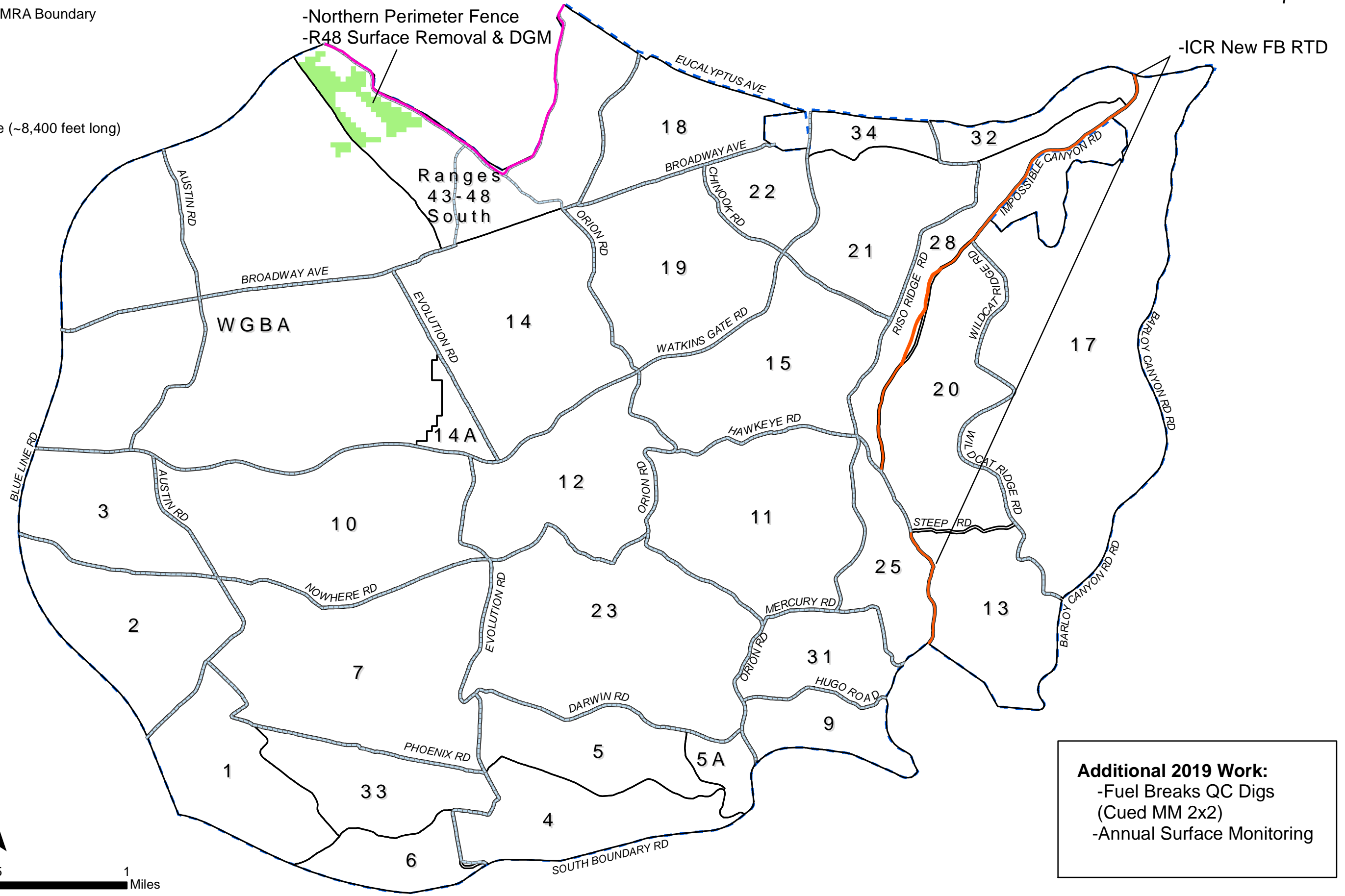


U.S. ARMY CORPS OF ENGINEERS
SACRAMENTO DISTRICT



FORMER FORT ORD
Unit B DGM Survey Status

- Track 3 Impact Area MRA Boundary
- Unit Boundaries
- Fuel Breaks
- Fuel Break RTD Areas
- Areas in Progress
- Proposed Fence Line (~8,400 feet long)



Impact Area MRA
FORMER FORT ORD
MONTEREY COUNTY, CALIFORNIA

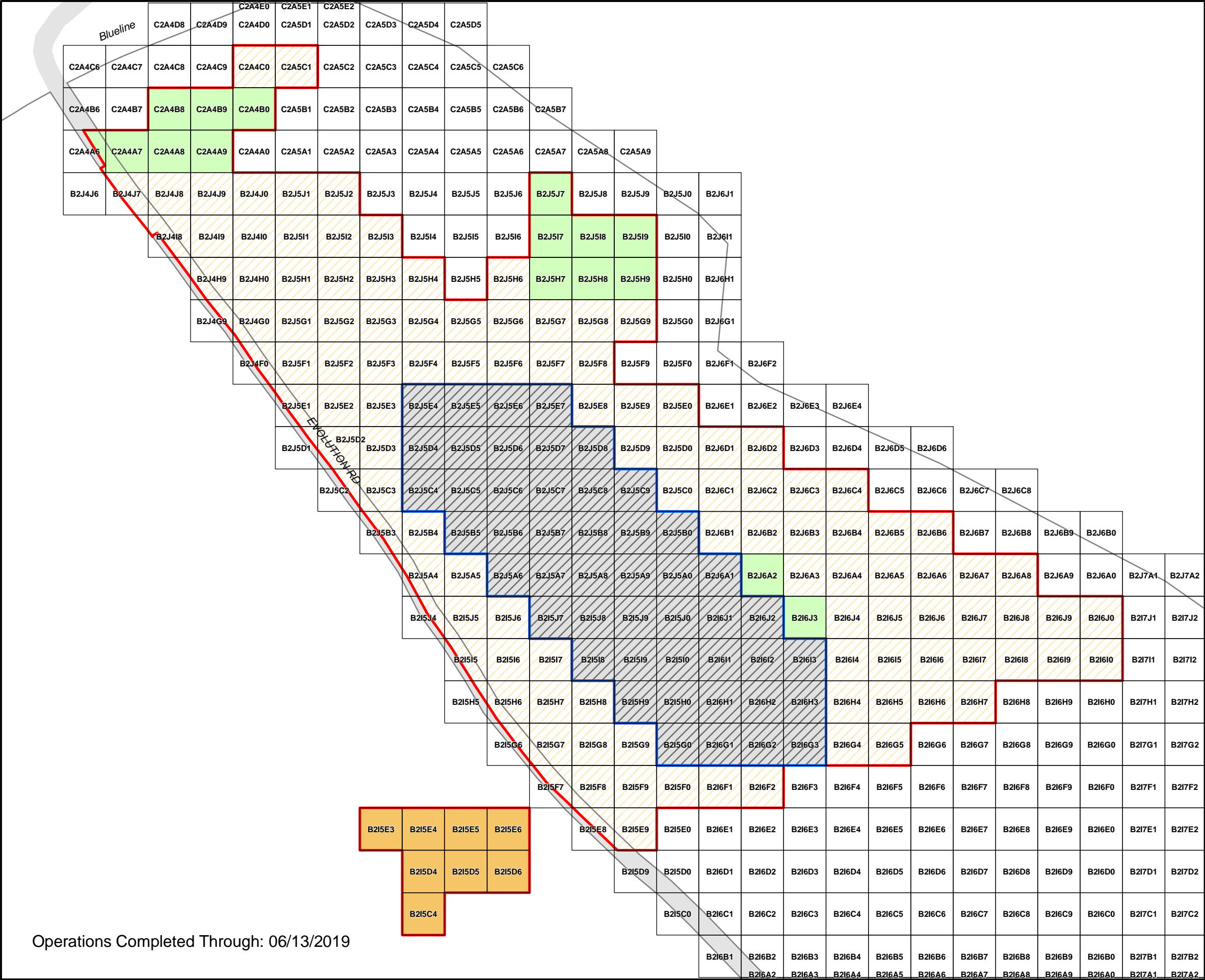
Figure 1
Remaining
2019 Field Activities
as of May 6, 2019



Technical Information Paper
Supplemental Quality Control Investigation
Impact Area Munitions Response Area Permanent Fuel Breaks
Former Fort Ord, California

OE-0685D.14

Figure 11
Additional Subsurface Removal Approach



U.S. ARMY CORPS OF ENGINEERS
SACRAMENTO DISTRICT

MAP

Legend

- Work Boundary - 2019
- Field Study Area - 2016
- Fuel Breaks

Mag and Dig Op Status

- Mag and Dig Op Planned
- Mag and Dig Op Complete
- Mag and Dig Op QC Complete
- Mag and Dig Op QA Complete

FORMER FORT ORD
Range 48
Mag and Dig Ops MEC Removal Status