

MR Status
Fort Ord MR BCT
11 September 2019

BLM AREA B

Security Measures and Outreach

- The website and kiosks were updated with current trail closure information on 7/3/2019.
- Notice and warning signs, trail closure fences, and boundary fences are in place around Unit B. Trails within Unit A are closed.
- Roads are subject to temporary closure during subsurface removal operations.

Digital Geophysical Mapping (DGM)

- DGM in Unit B was completed 7/22. Approximately 9 acres were inaccessible to DGM.

Subsurface MEC Removal

- All planned subsurface removals have been completed in:
 - Units B-3E and B-3E-NE
 - Units B-3W and C
 - Unit B-2A
- Subsurface MEC removal on the 12-ft wide trail footprints has been completed on:
 - Unit A: Trails 69, 67, 68, 65 and 66
- Subsurface MEC removal on the 12-ft wide trail footprints is in progress on:
 - Unit B: Trails 91, 92, 93 and 94 (started 8/19) (not shown: BLM abandoned trail alignments); with additional areas to improve drainage along Trail 91
- Subsurface removal on additional road segments is in progress. To complete this work, it is necessary to remove Unit B perimeter fence.

IMPACT AREA

FIELD ACTIVITIES

Impossible Canyon Road and Wildcat Ridge Road Fuel Break Work

- Subsurface removal activities were completed 6/17. Fuel break markers will be installed.

Fuel Breaks Additional Verification

- The Metal Mapper (MM) 2x2 dynamic survey was conducted from 10/22/2018 to 4/16/2019 (25.5 acres).
- 437 preliminary cued targets in 3 road grids were previously excavated (completed 1/10). This information will be used to refine the classification process.
- The MM 2x2 cued survey is complete in 77% of the work area as of 9/5. As of 9/5, 8,070 cued targets have been identified for intrusive investigation; 5,395 have been investigated.

Range 48 Northern Portion Near-surface MEC Removal

- Near-surface MEC removal (up to 6 inches in depth): 25 of 148 grids were completed from 1/15 to 2/28. Fieldwork was temporarily suspended due to habitat conservation requirements. Work resumed 6/12. Overall 74% complete as of 9/5. DGM will be conducted.

Target/Debris Disposal

- Demolition operation was conducted on 8/28.
- Nine off-site shipments of MD have been completed to date.

OTHER ACTIVITIES

Impact Area North Perimeter Fence Construction

- Fence construction was completed on 8/12. Fuel break markers will be installed.

MMRP SITE SECURITY PROGRAM

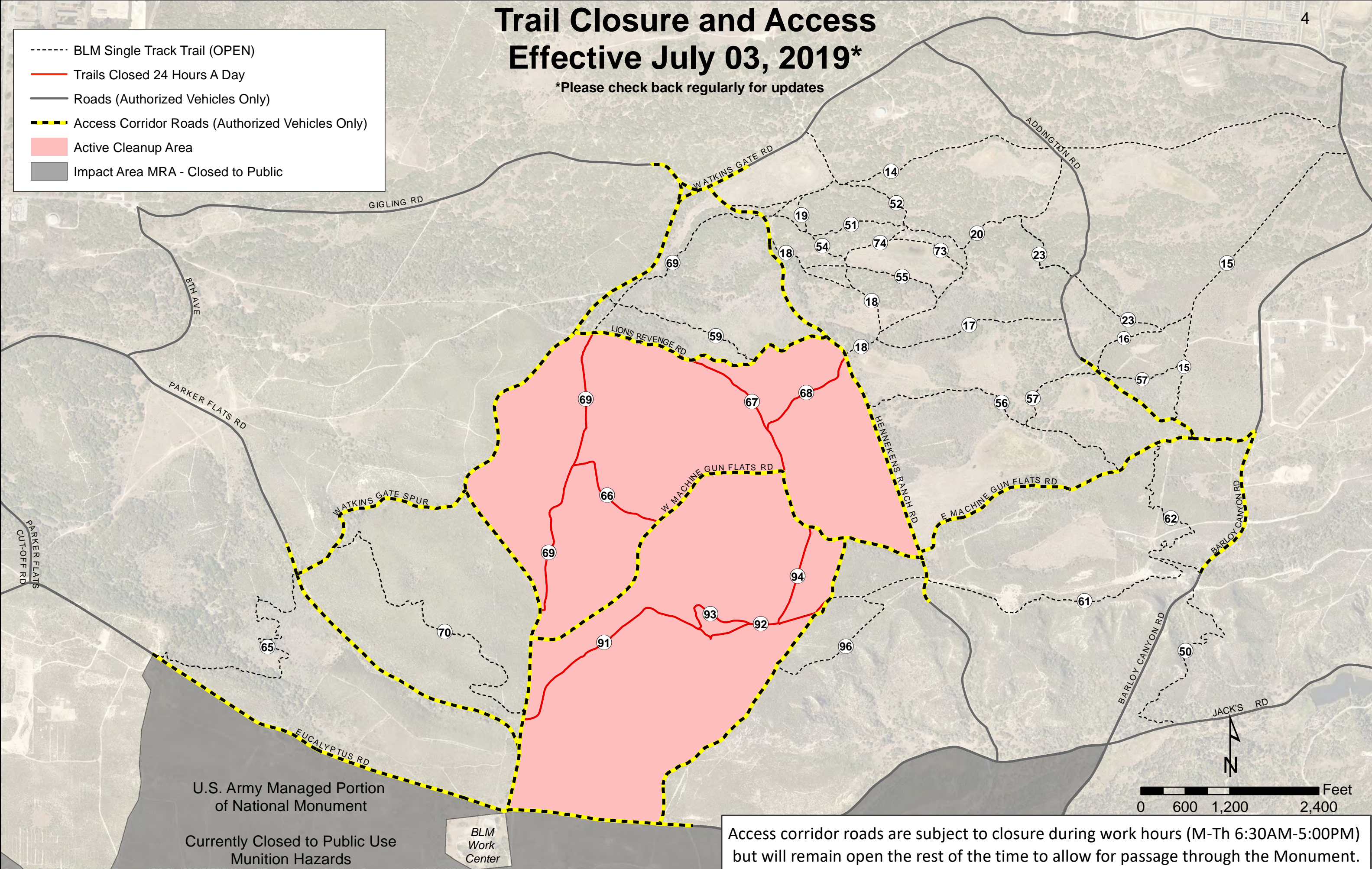
Update for September 11, 2019 BCT

- Trespass Incident Reports
 - Last 24 days (8/17/2019 – 9/9/2019): 0
 - Year to Date: 24
- Munitions Incident Reports
 - Last 24 days (8/17/2019 – 9/9/2019): 1
 - On September 3, 2019 a portion of a suspected MK1 illumination grenade was discovered by a contractor installing concrete in the backyard of a home near Imjin Road in Marina. Monterey County Bomb Squad detonated the item, which was likely MD.
 - Year to Date: 6
- Security Incident Reports
 - Following the August discovery of a PG&E contractor working in the restricted Impact Area without having followed proper access procedures, BRAC issued a letter to PG&E and met with PG&E management, BLM, and FORA. Action items include: install signs for PG&E personnel and contractors, remove PG&E's padlocks from the Impact Area, provide shape files, schedule MEC training, and collaborate on a root cause analysis.
- Community Education Participants– Year to Date: 240
- Munitions Recognition and Safety Training Participants – Year to Date: 225

Trail Closure and Access Effective July 03, 2019*

*Please check back regularly for updates

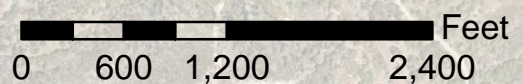
- BLM Single Track Trail (OPEN)
- Trails Closed 24 Hours A Day
- Roads (Authorized Vehicles Only)
- Access Corridor Roads (Authorized Vehicles Only)
- Active Cleanup Area
- Impact Area MRA - Closed to Public



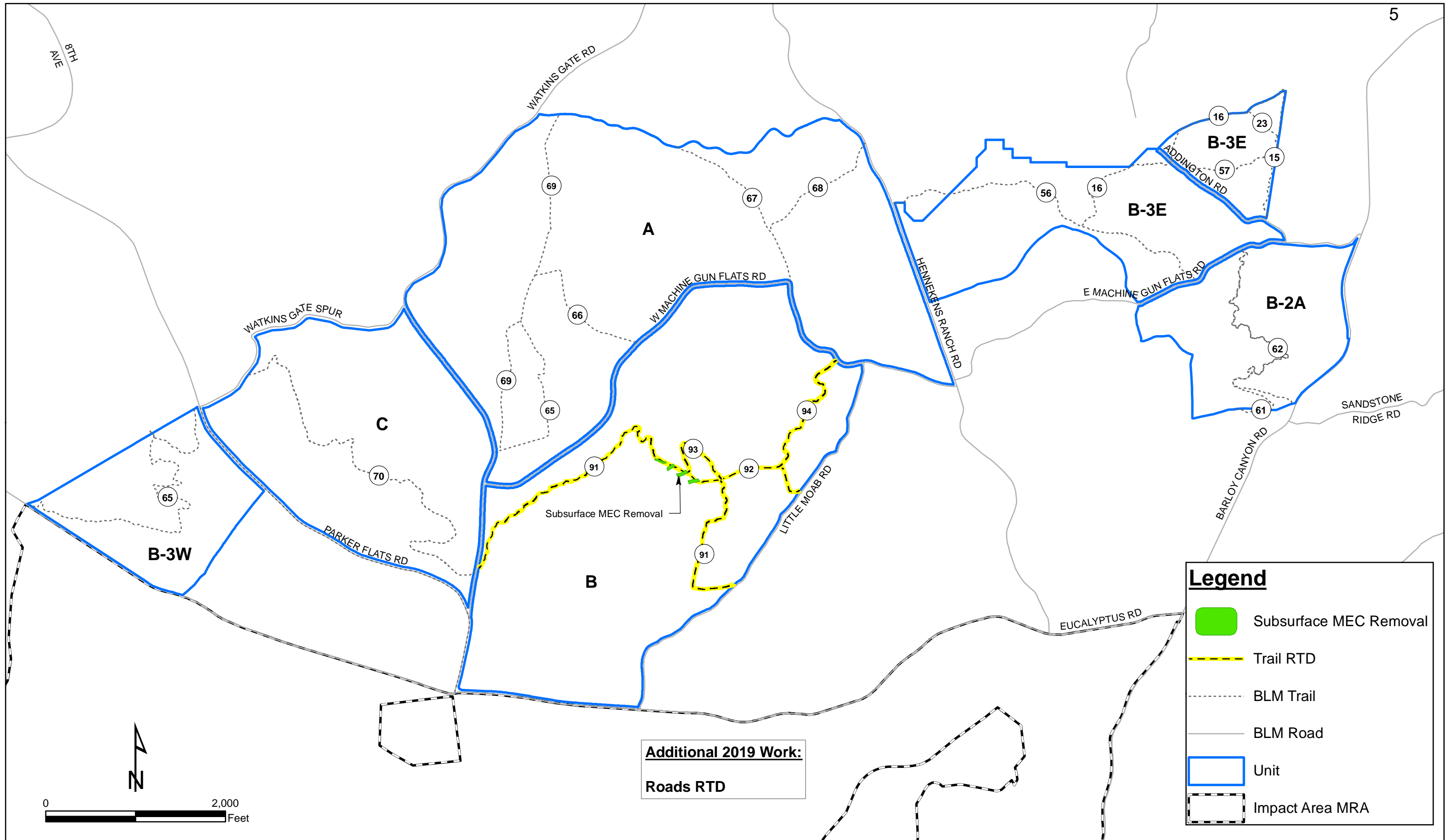
U.S. Army Managed Portion
of National Monument

Currently Closed to Public Use
Munition Hazards

BLM
Work
Center



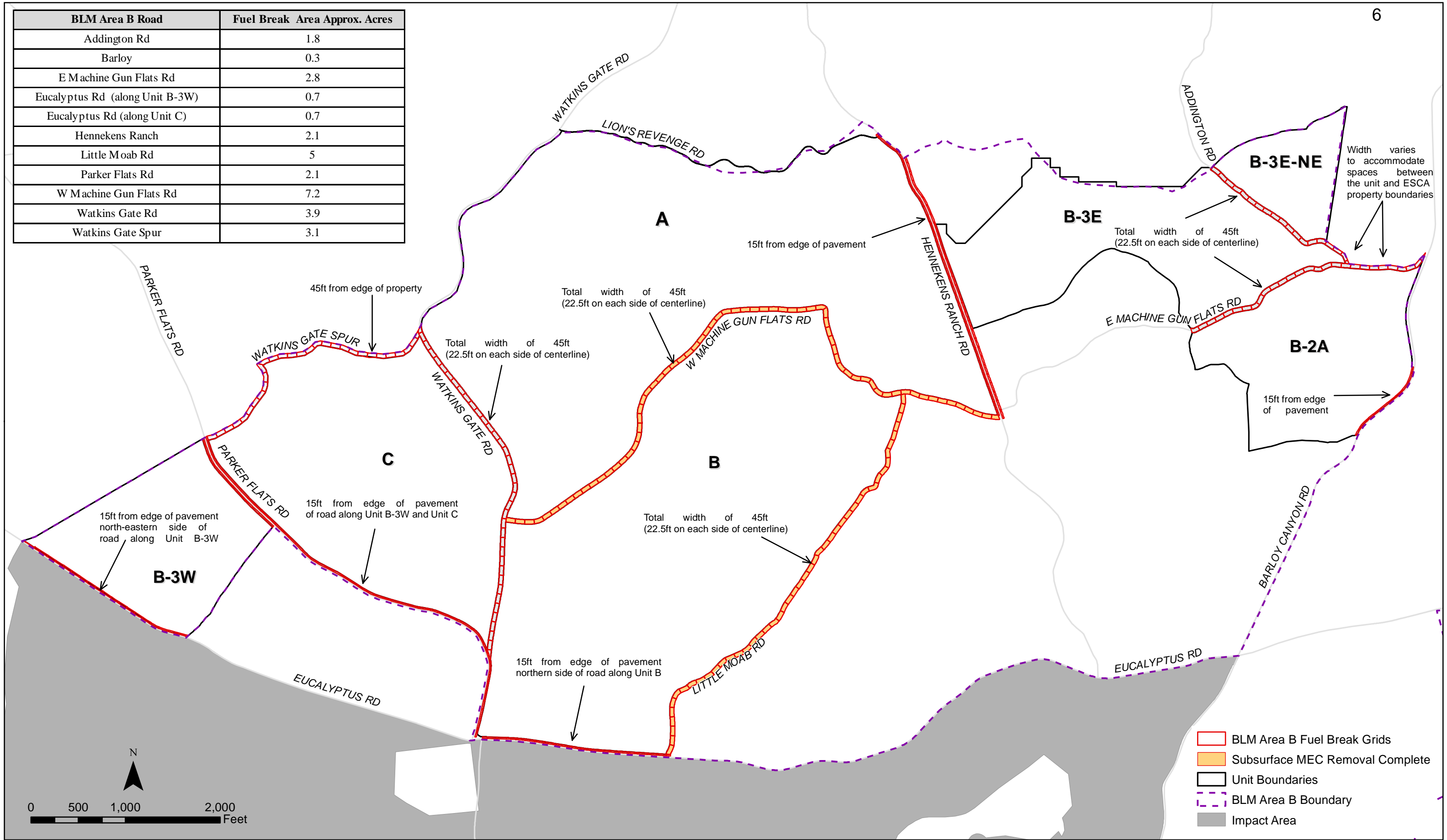
Access corridor roads are subject to closure during work hours (M-Th 6:30AM-5:00PM) but will remain open the rest of the time to allow for passage through the Monument.



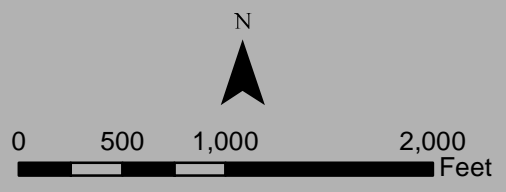
Munitions and Explosives of Concern Remedial Action
 BLM Area B
 Former Fort Ord, California

Figure 2
 Remaining 2019 Field Activities
 BLM Area B
 as of September 11, 2019

BLM Area B Road	Fuel Break Area Approx. Acres
Addington Rd	1.8
Barloy	0.3
E Machine Gun Flats Rd	2.8
Eucalyptus Rd (along Unit B-3W)	0.7
Eucalyptus Rd (along Unit C)	0.7
Hennekens Ranch	2.1
Little Moab Rd	5
Parker Flats Rd	2.1
W Machine Gun Flats Rd	7.2
Watkins Gate Rd	3.9
Watkins Gate Spur	3.1



- BLM Area B Fuel Break Grids
- Subsurface MEC Removal Complete
- Unit Boundaries
- BLM Area B Boundary
- Impact Area

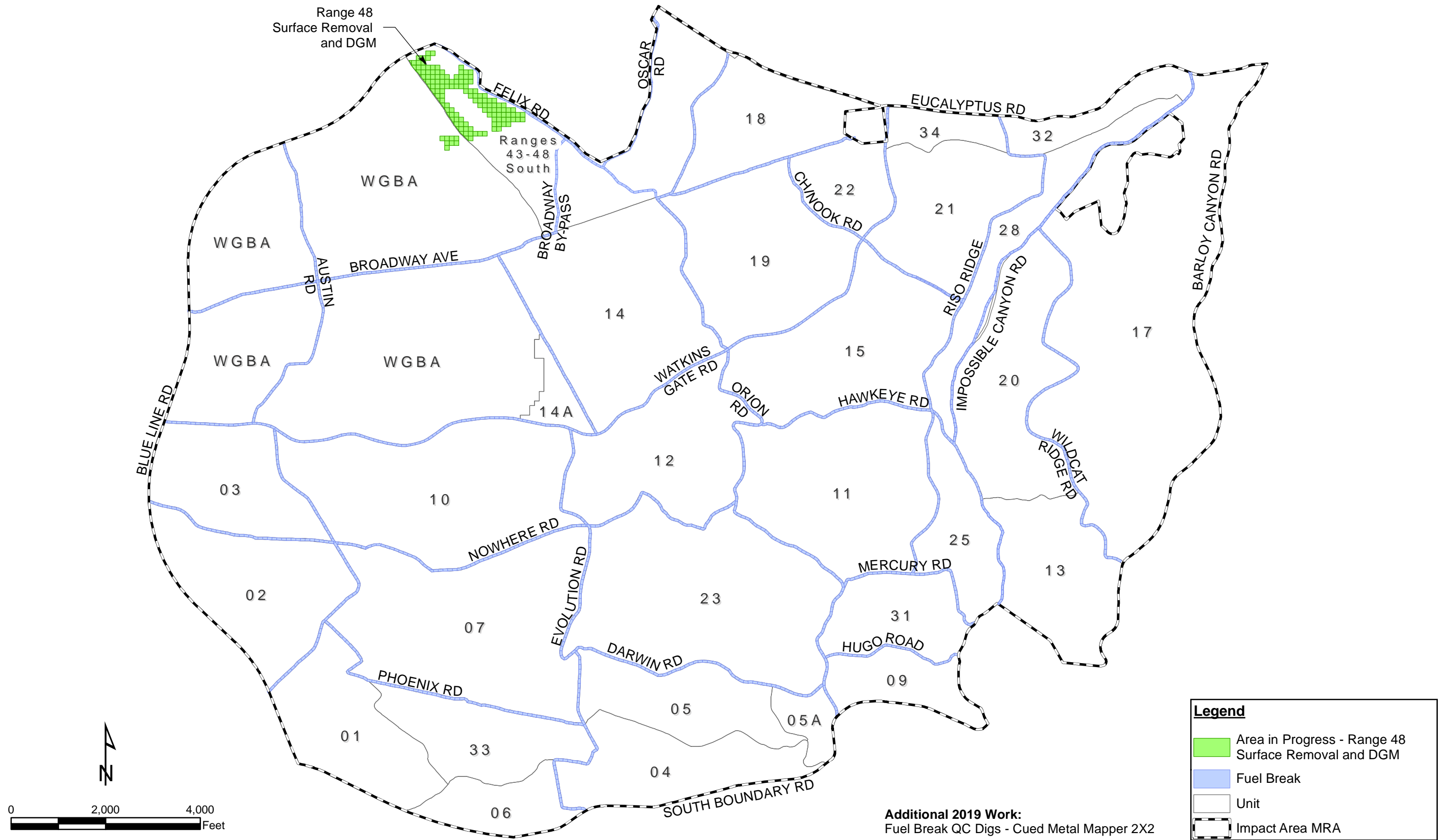


BLM Area B - FWV 025
 FORMER FORT ORD
 MONTEREY COUNTY, CALIFORNIA

OE-0900B.4

Figure 1
 BLM Area B Fuel Breaks

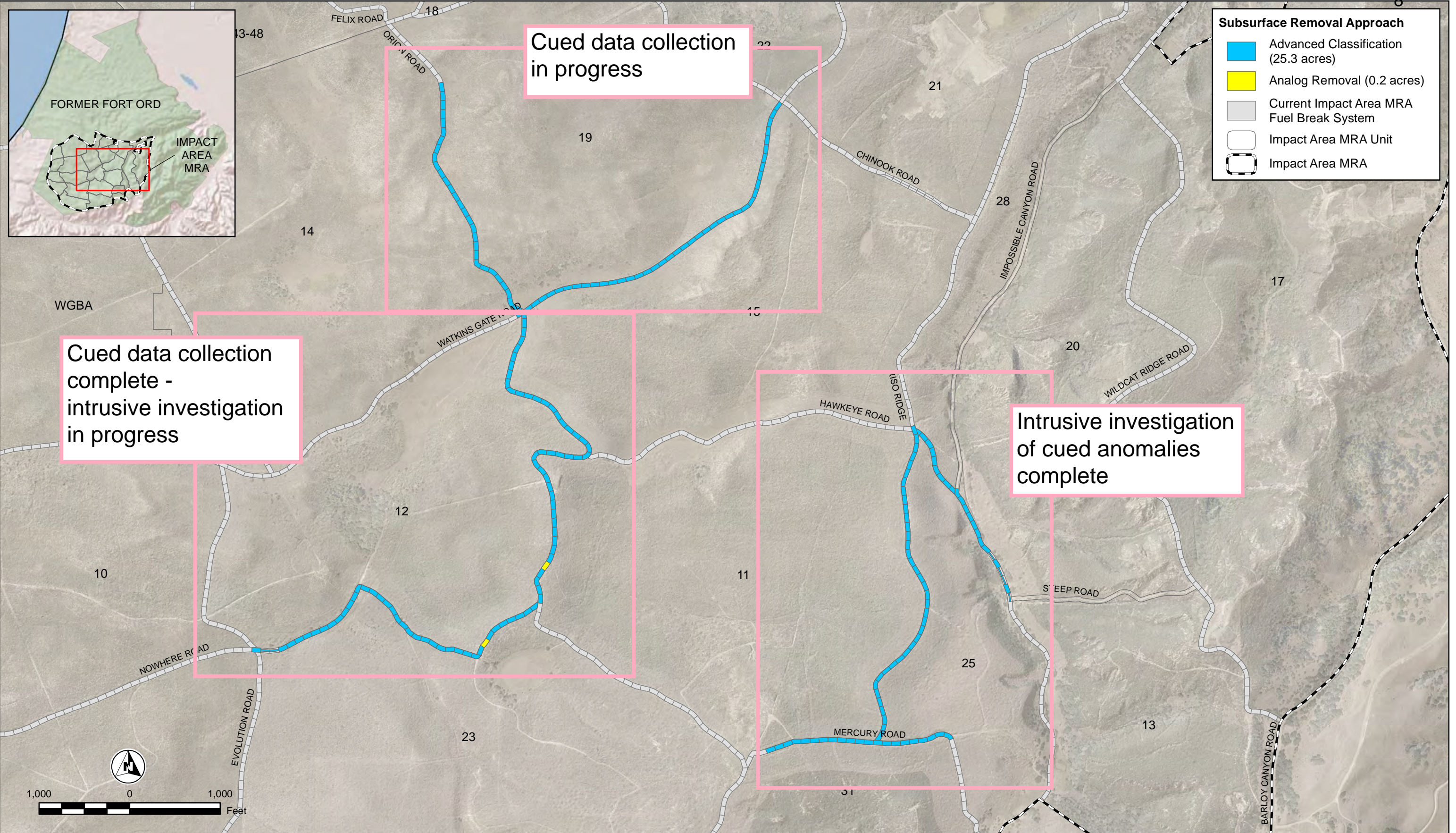




Munitions and Explosives of Concern Remedial Action
Impact Area MRA
Former Fort Ord, California

Figure 1
Remaining 2019 Field Activities
as of August 19, 2019





Subsurface Removal Approach

- Advanced Classification (25.3 acres)
- Analog Removal (0.2 acres)
- Current Impact Area MRA Fuel Break System
- Impact Area MRA Unit
- Impact Area MRA

Cued data collection complete - intrusive investigation in progress

Cued data collection in progress

Intrusive investigation of cued anomalies complete



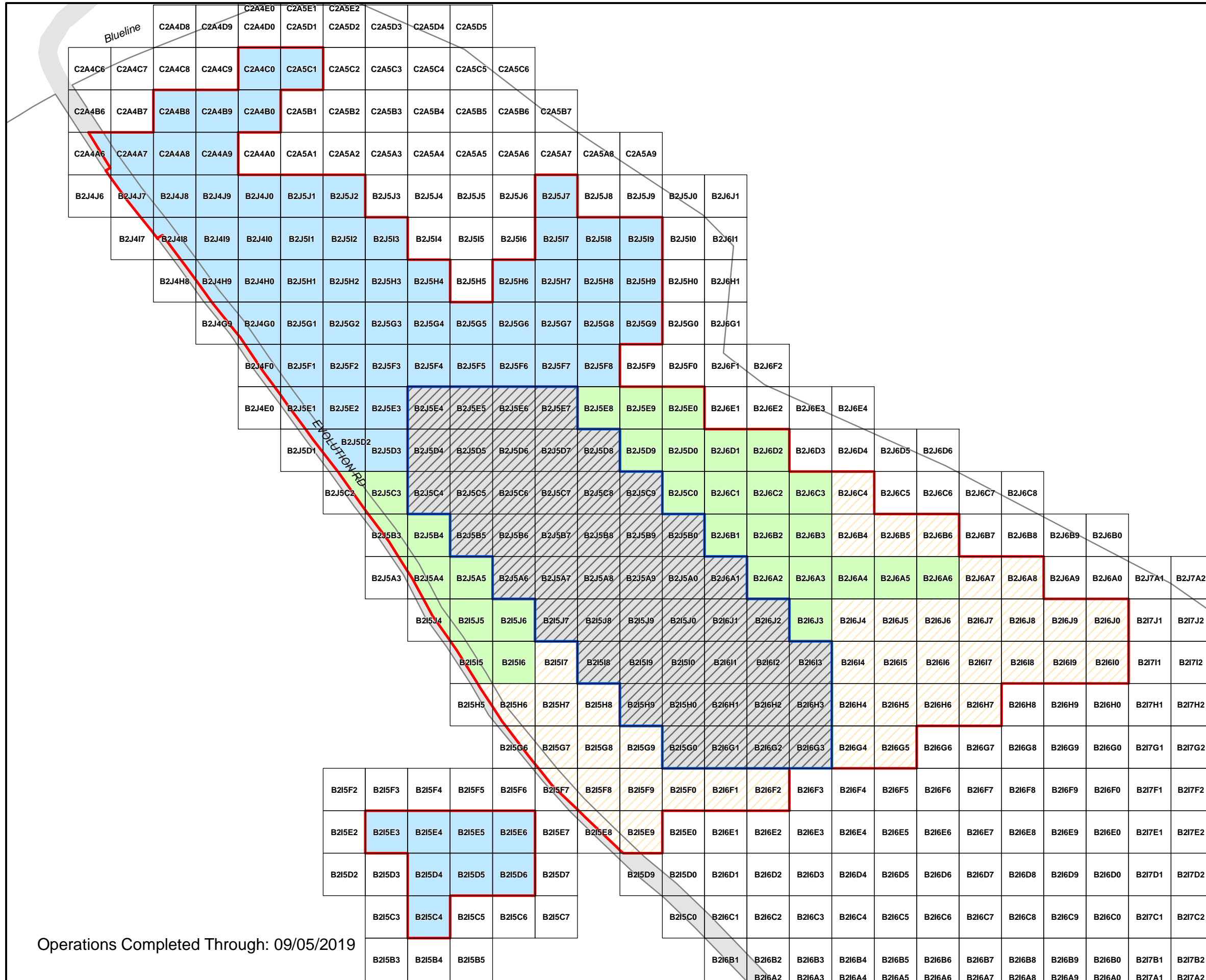
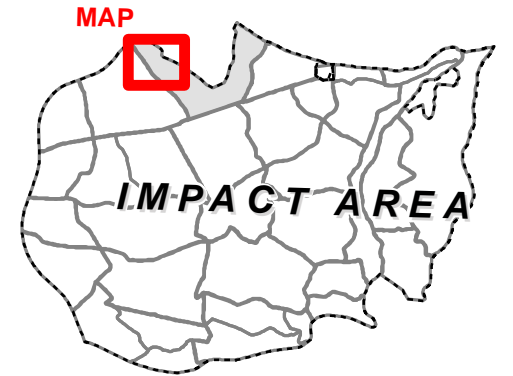
Technical Information Paper
 Supplemental Quality Control Investigation
 Impact Area Munitions Response Area Permanent Fuel Breaks
 Former Fort Ord, California

OE-0685D.14

Figure 11
 Additional Subsurface Removal Approach

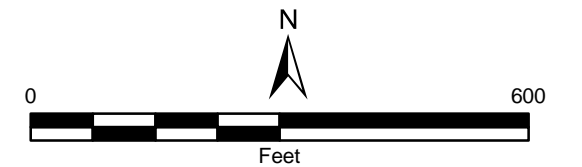


U.S. ARMY CORPS OF ENGINEERS
SACRAMENTO DISTRICT



Legend

- Work Boundary - 2019
- Field Study Area - 2016
- Fuel Breaks
- Mag and Dig Op Status**
- Mag and Dig Op Planned
- Mag and Dig Op Complete
- Mag and Dig Op QC Complete
- Mag and Dig Op QA Complete



FORMER FORT ORD
Range 48
Mag and Dig Ops MEC Removal Status