
Environmental Services Cooperative Agreement (ESCA)

February 2023



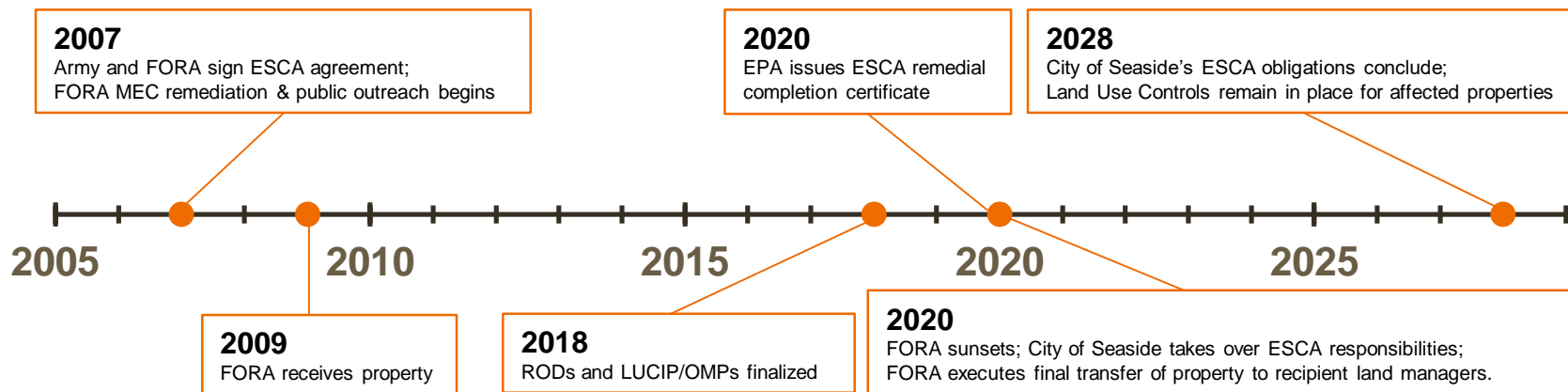
Acronyms

CSUMB	California State University, Monterey Bay
ESCA	Environmental Services Cooperative Agreement
FORA	Fort Ord Reuse Authority
LTO	Long Term Obligations
LUC	Land Use Control(s)
LUCIP/OMP	Land Use Control Implementation Plan/Operation and Maintenance Plan
MEC	Munitions and Explosives of Concern
MOUT	Military Operations in Urban Terrain
MPC	Monterey Peninsula College
MRA	Munitions Response Areas
PPP&PM	Police, Permits, Planning and Property Managers
ROD	Record of Decision

What is the Environmental Services Cooperative Agreement ?

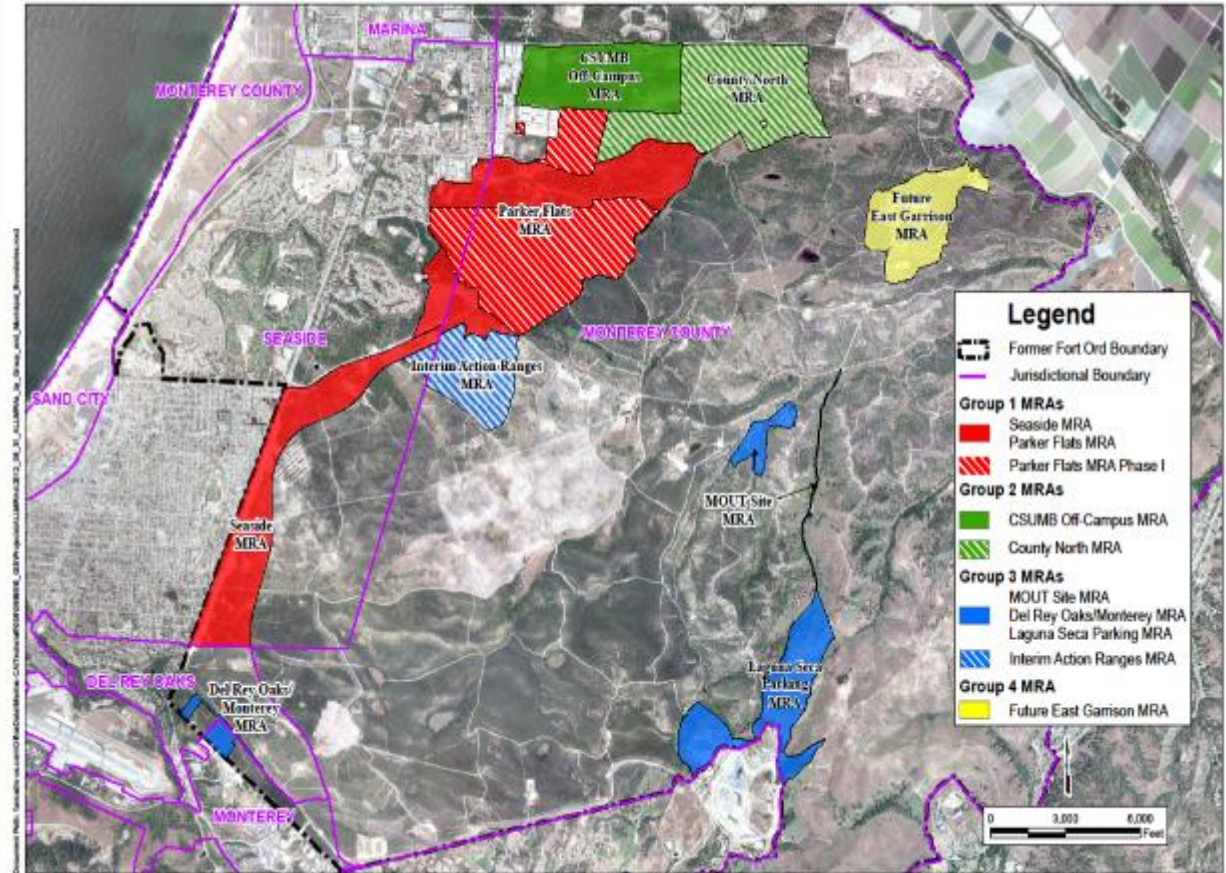
- This is a mechanism that allows the federal government to provide cleanup funding to approved authorities
- The current purpose of the program is to address residual safety issues associated with former munitions training conducted in Fort Ord
- City of Seaside, as successor to the Fort Ord Reuse Authority, is responsible for the long term implementation of the land use controls for public safety

Status and History of the ESCA



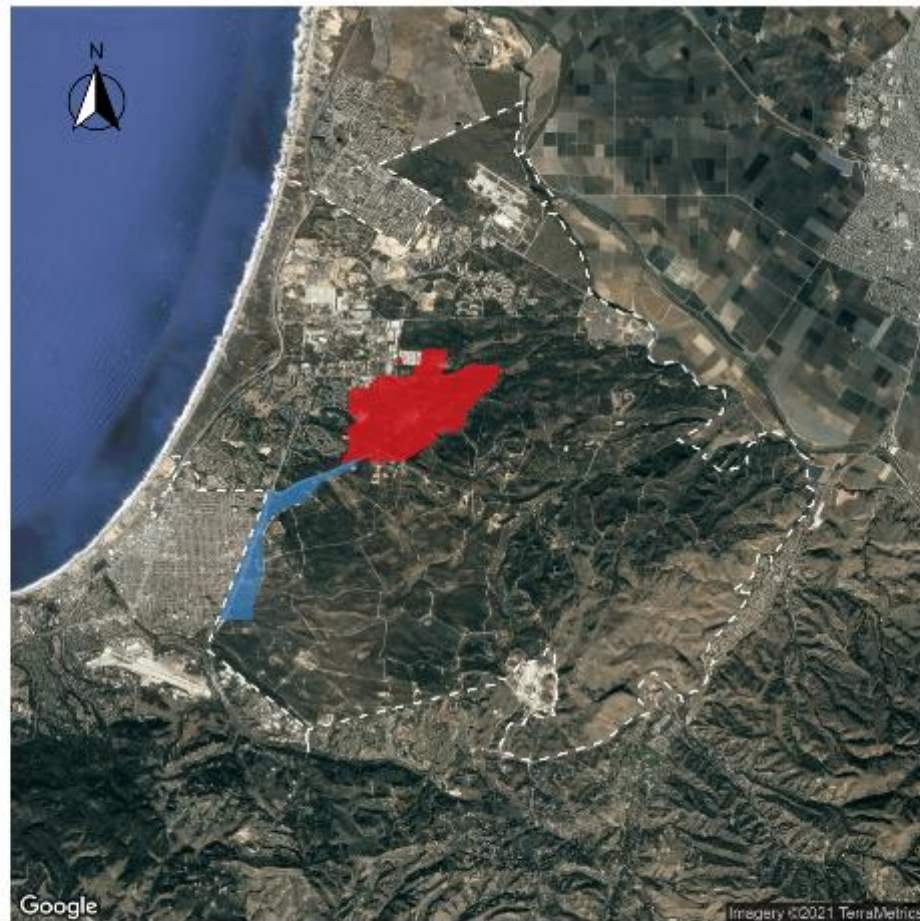
ESCA Properties

- ~3,300 acres of former Ft. Ord
- Lands located within the jurisdictional boundaries of Monterey County and the cities of Del Rey Oaks (DRO), Monterey, and Seaside.



Group 1: Seaside and Parker Flats

- Cleanup status:
 - Removals complete
 - Land use control requirements (ESCA-0361E)
 - Land transferred
- Proposed Future Reuses
 - Residential
 - Non-residential development
 - Habitat Reserve
 - Veteran's Cemetery



Group 1 Re-Use Designation

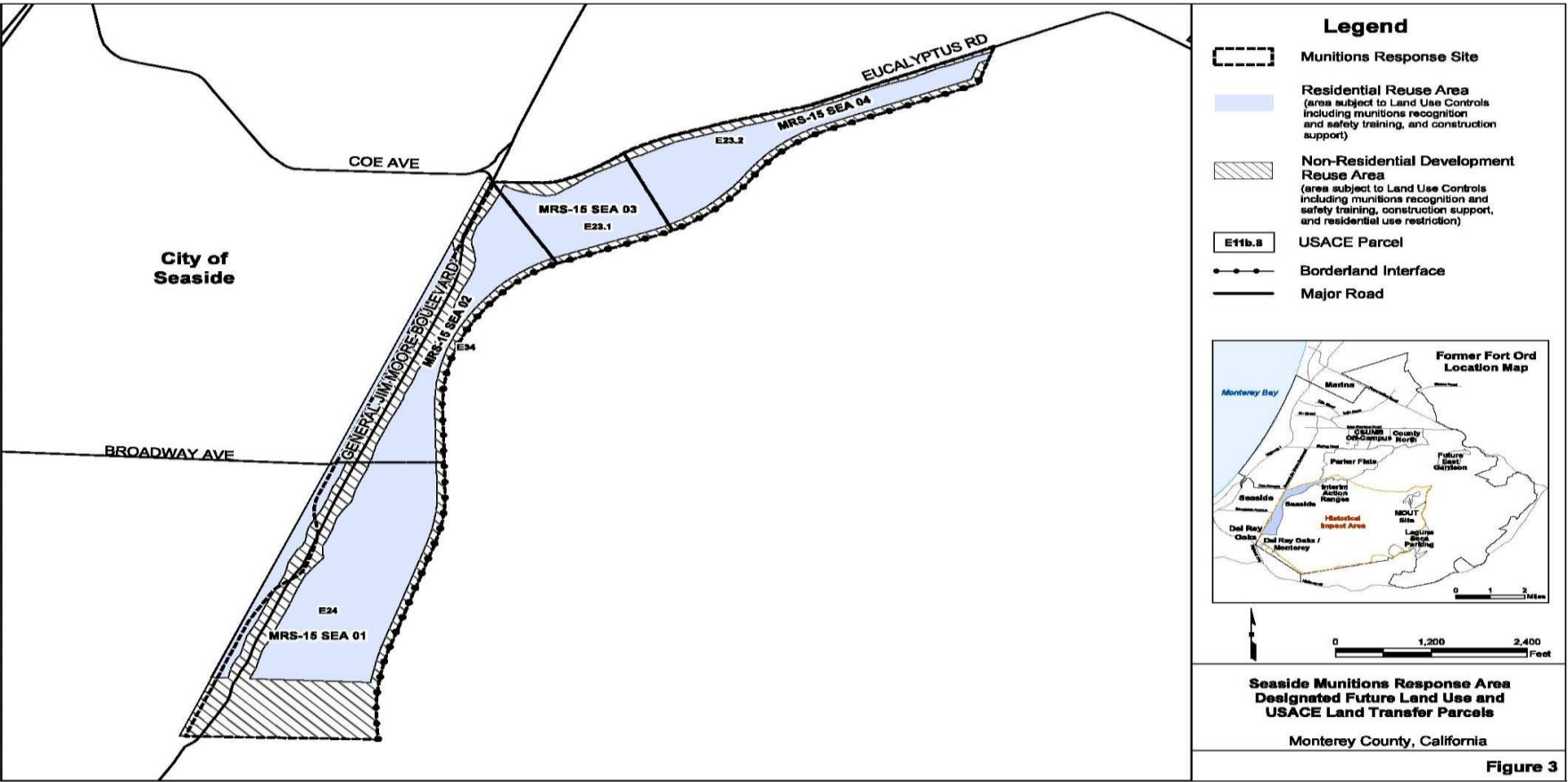
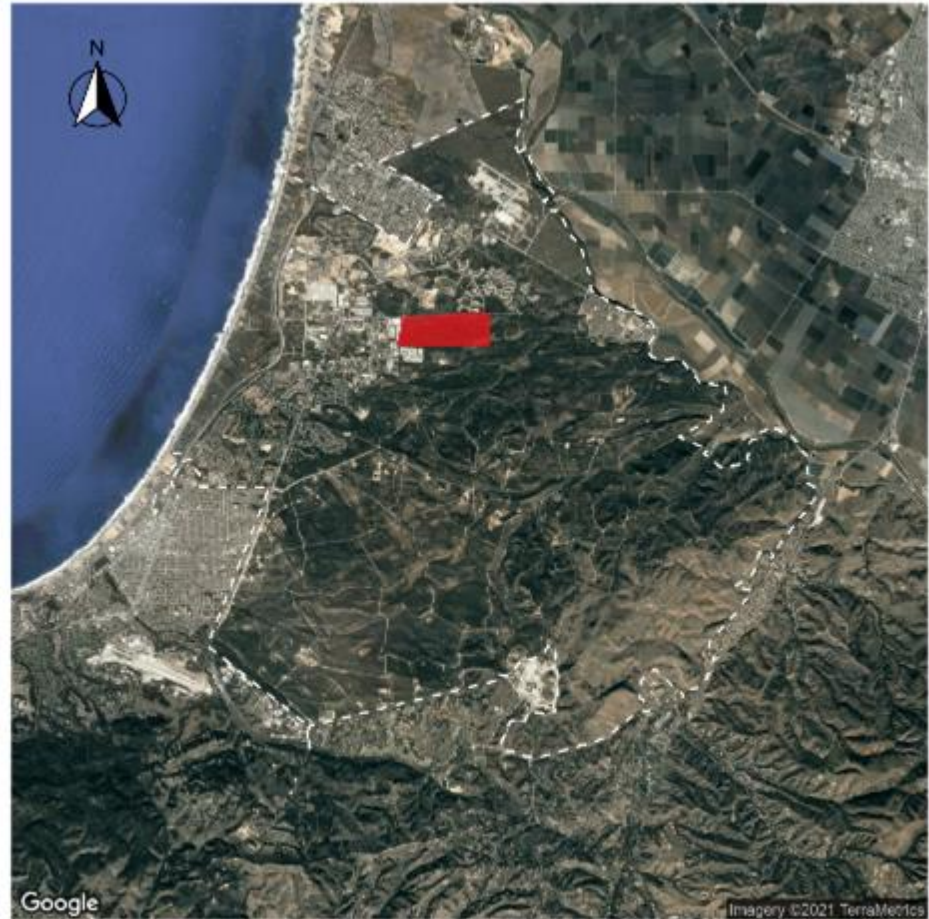


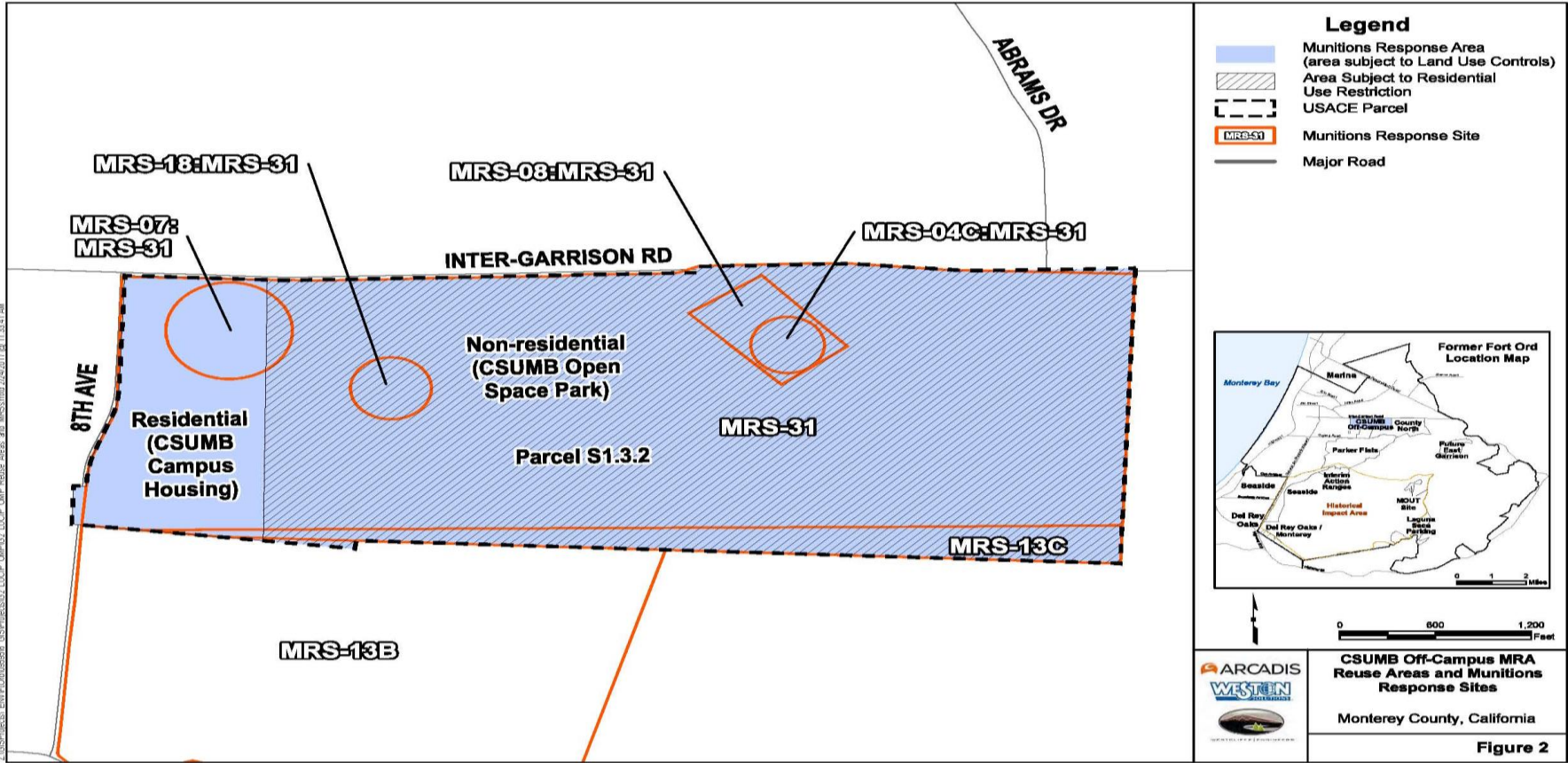
Figure 3

Group 2: CSUMB Off-Campus

- Cleanup status:
 - Removals complete
 - Land use control requirements (ESCA-0305B)
 - Land transferred
- Proposed Future Reuses
 - Residential
 - Non-residential development

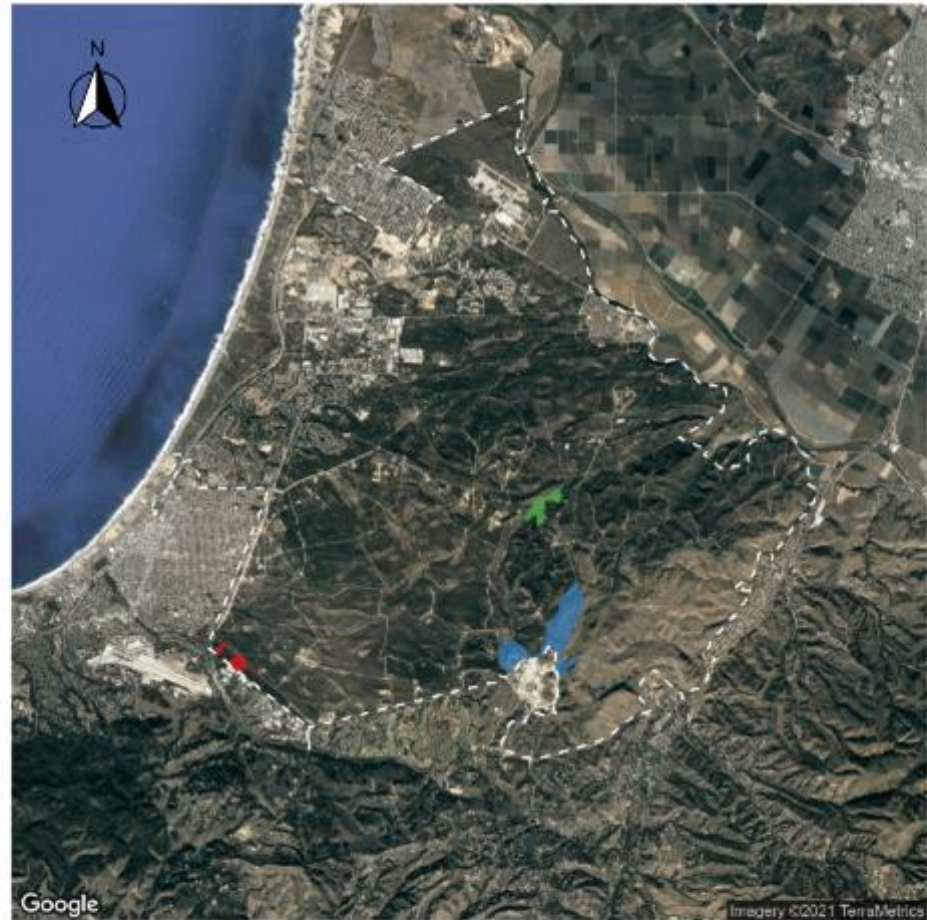


Group 2 Re-Use Designation

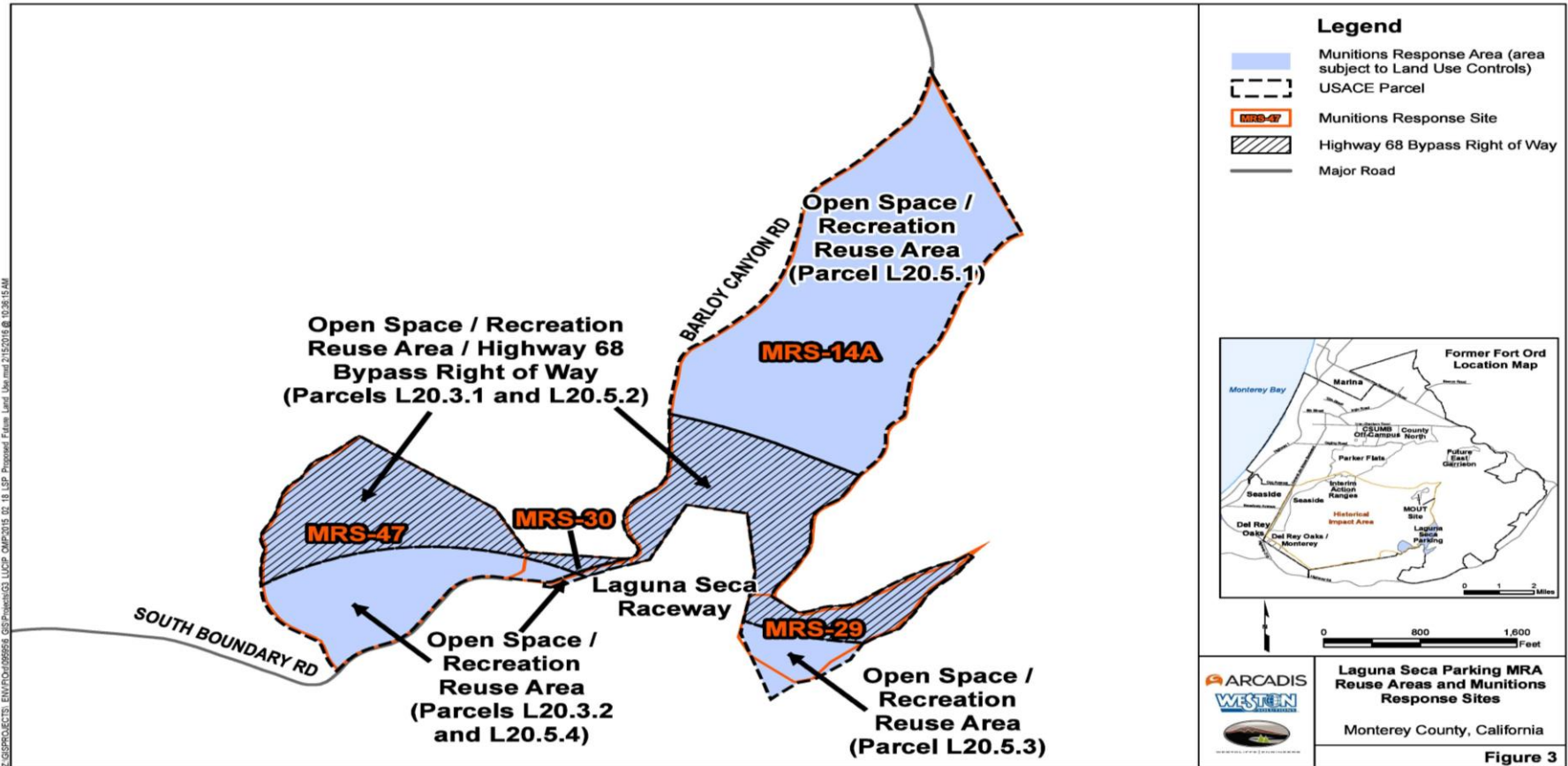


Group 3: DRO/Monterey, Laguna Seca Parking, MOUT Site

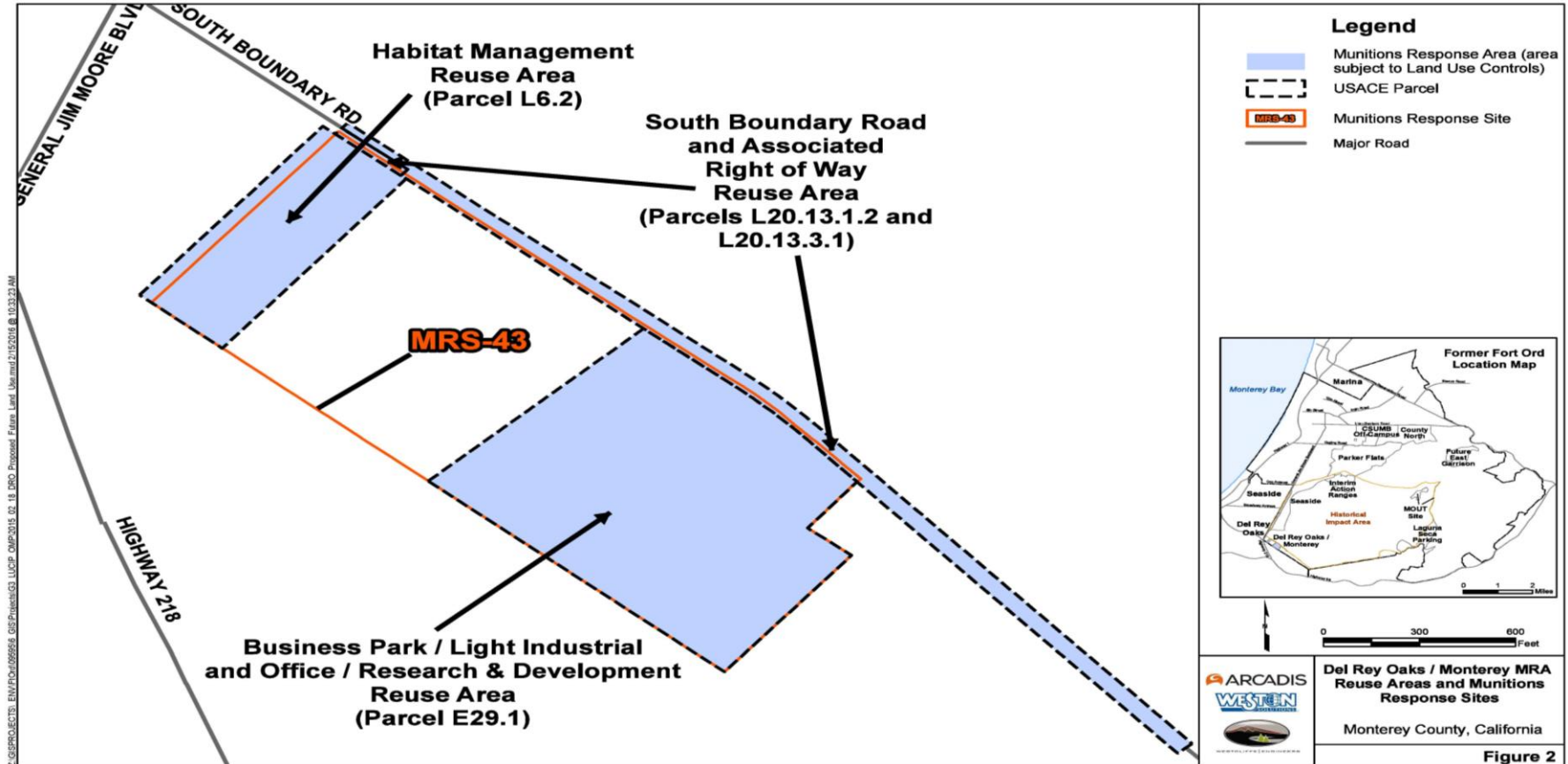
- Cleanup status:
 - Removals complete
 - Land use control requirements (ESCA-0301B)
 - Land transferred
- Proposed Future Reuses
 - Habitat management
 - Non-residential development
 - Continued use as overflow parking
 - Continued use as law enforcement training area



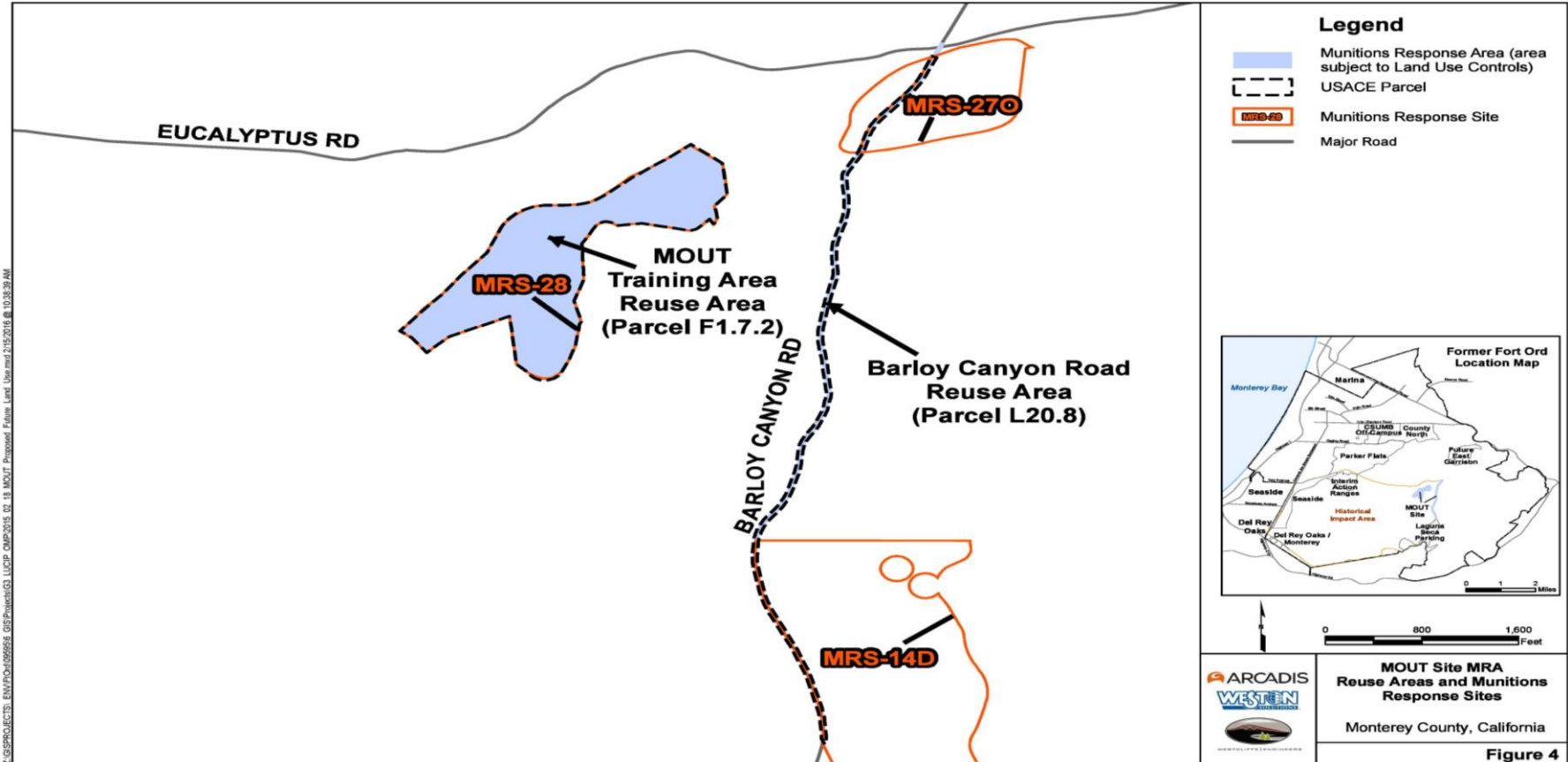
Group 3 Re-Use Designation



Group 3 Re-Use Designation

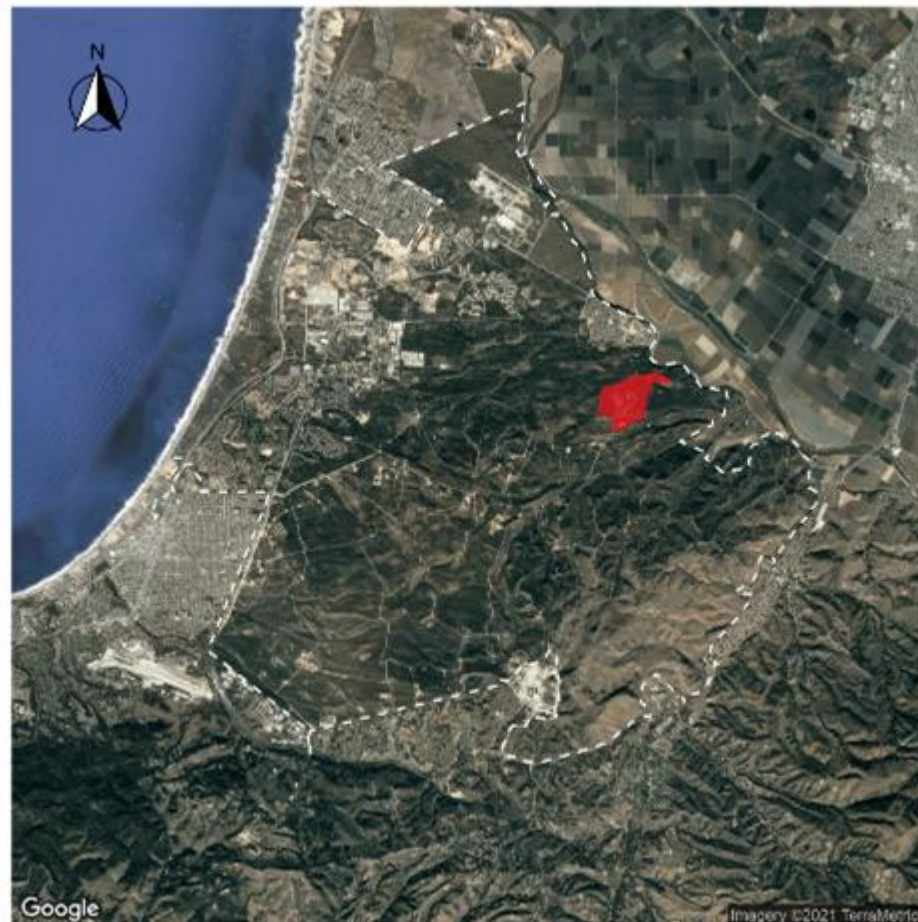


Group 3 Re-Use Designation

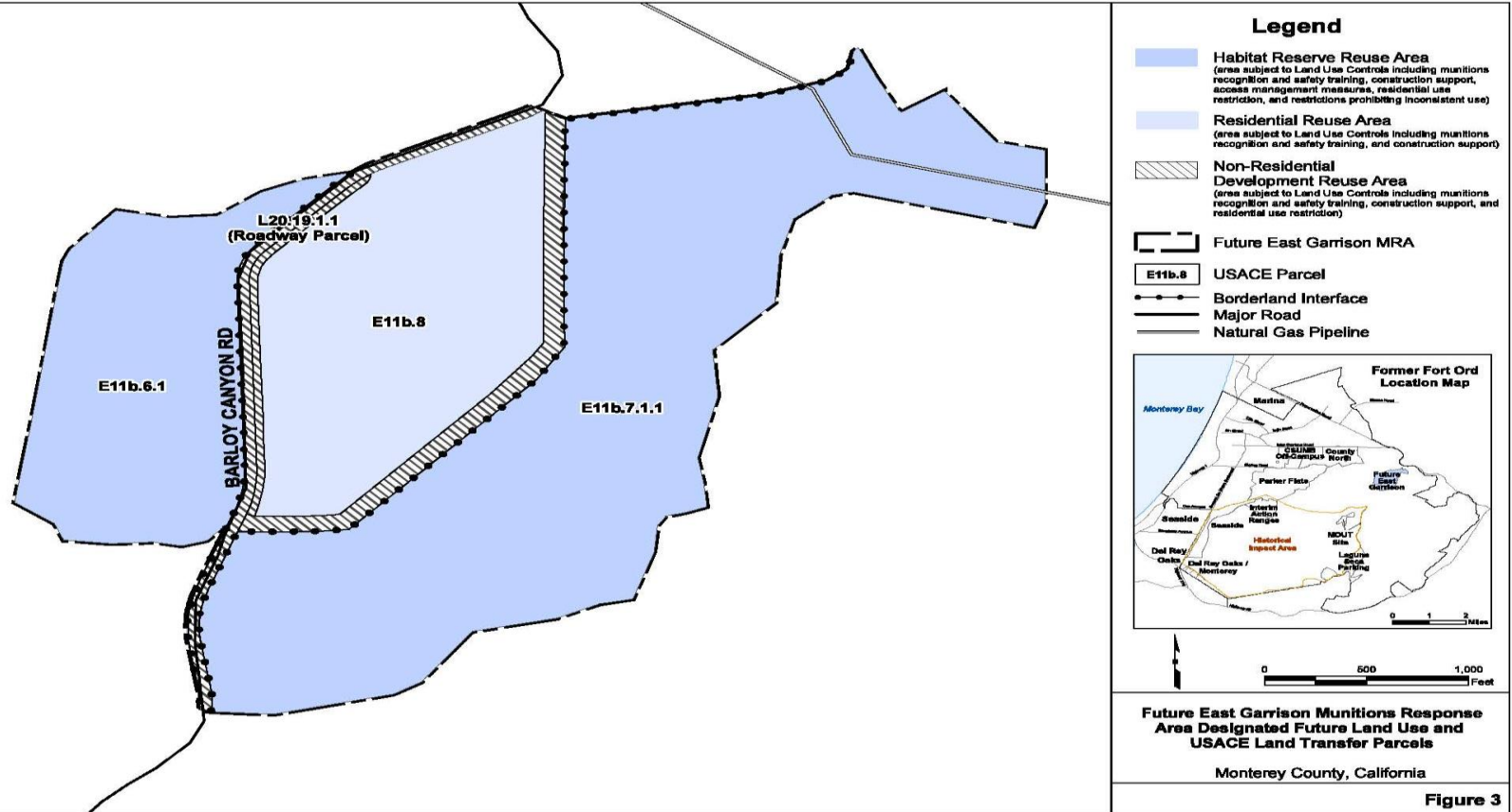


Group 4: Future East Garrison

- Cleanup status:
 - Removals complete
 - Land use control requirements (ESCA-0364B)
 - Land transferred
- Proposed Future Reuses
 - Residential
 - Non-residential development
 - Habitat reserve

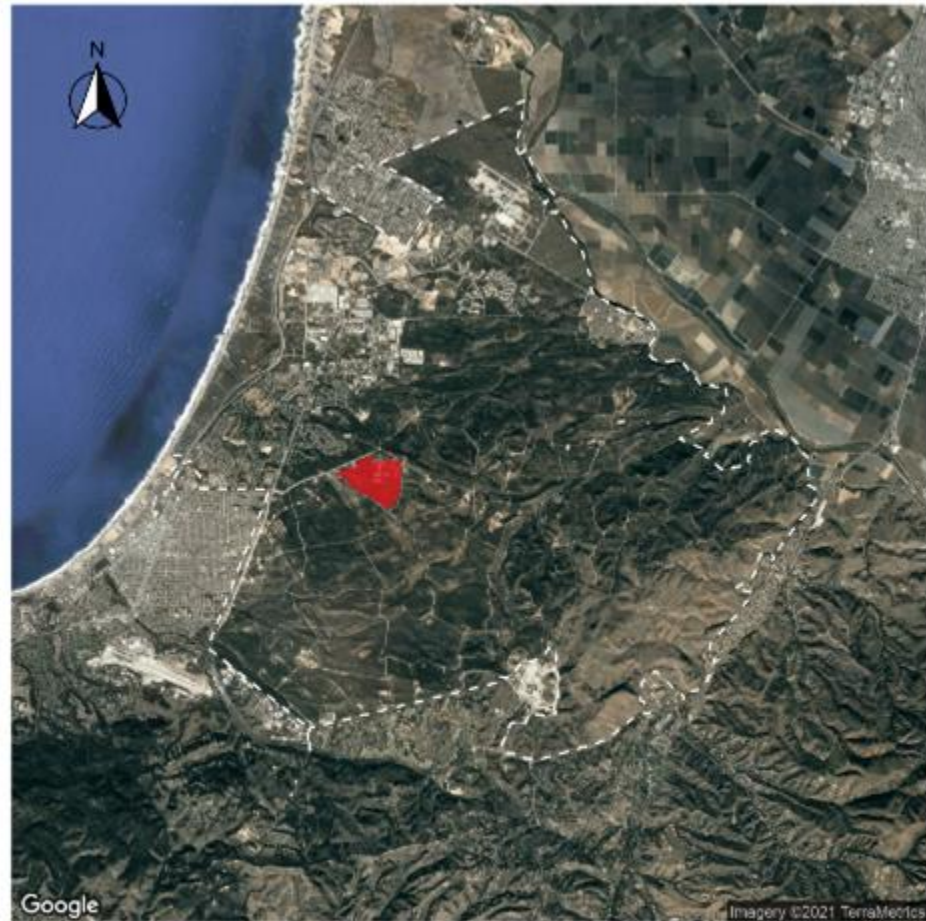


Group 4 Re-Use Designation

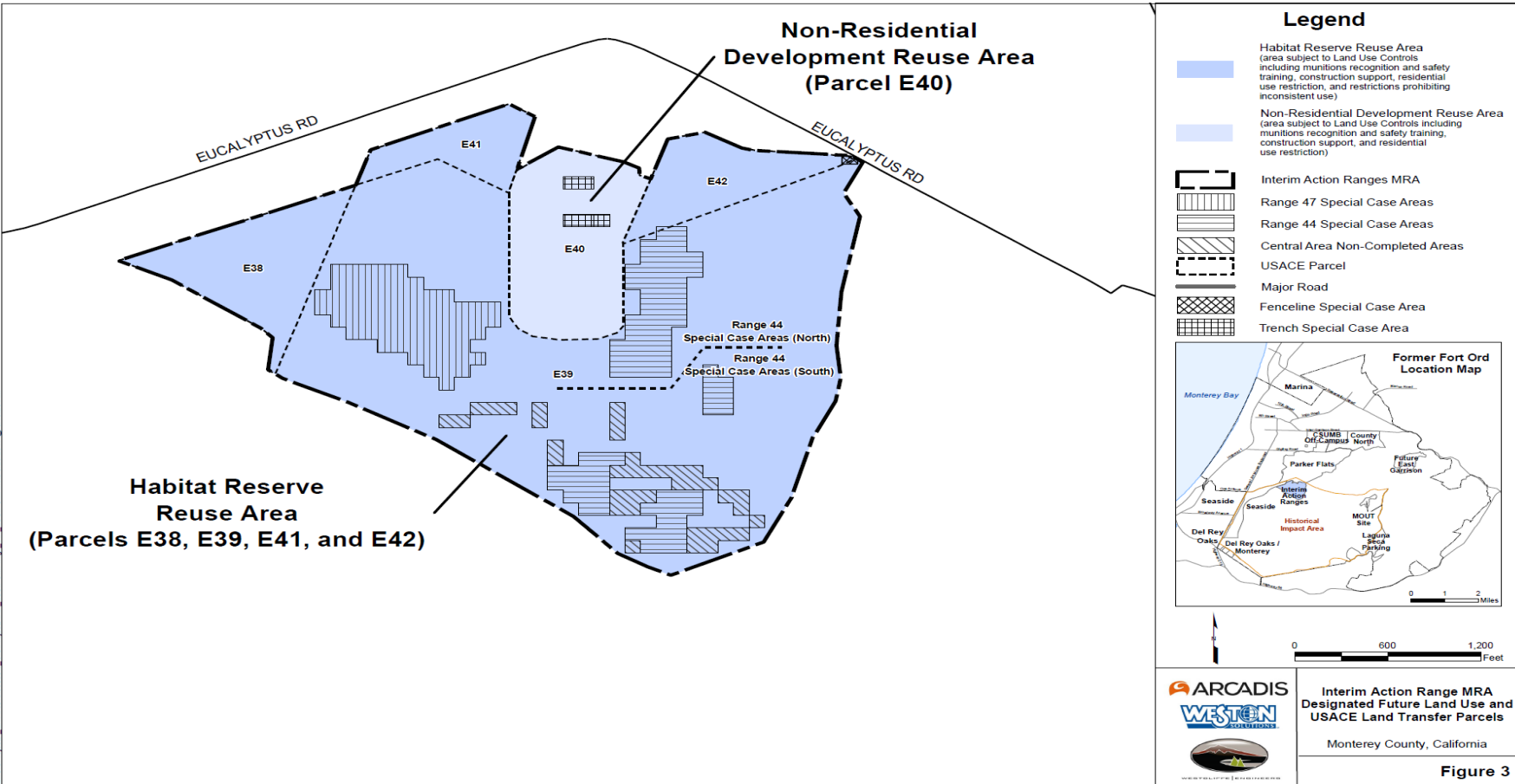


Interim Action Ranges

- Cleanup status:
 - Removals complete
 - Land use control requirements (ESCA-0337B)
 - Land transferred
- Proposed Future Reuses:
 - Non-residential development
 - Habitat reserve



Interim Action Ranges Re-Use Designation



Land Use Controls Remedy Overview

Munitions Recognition & Safety Training

- Ensure that land users involved in ground disturbing activities are educated about:
 - Munitions and Explosives of Concern
 - How to report
 - Who to notify

Construction Support

- Define construction support levels and requirements
- Implementation guidance
- Process for responding to MEC

Residential Use Restriction

- Maintain residential use restrictions
- Applicable only to properties designated for non-Residential Re-use

Habitat Reserve Restrictions

- Maintain habitat reserve areas access and use restrictions
- Applicable only to properties designated for Habitat Reserve

LUC Instruments and Agreements

Local Digging and Excavation Ordinances

- Adopted by County and Cities
- Ensure awareness of potential MEC and establishes requirements for permits and construction support

Memorandum of Agreement with DTSC

- FORA, County, Cities, CSUMB, and MPC agreement with DTSC
- Implement compliance monitoring and reporting on LUCs

Covenants to Restrict Use of Property

- Place restrictions on use of the property
- Prohibit activity in violation of jurisdiction ordinances

Deed Restrictions

- Place restrictions on use of the property
- Requires notice of potential MEC, construction support and requirements for response to suspect MEC finds

[illegible][illegible]

21

Recent Activities

- Met with land owners to discuss and review land use restrictions that apply to their land
- Worked on signage



Contact Us

<https://www.ci.seaside.ca.us/fortordescasca>

esca@ci.seaside.ca.us

(831) 899-6773 or (831) 899-6774

656 Broadway (Seaside Creates office) Seaside, CA 93955

