

---

# Environmental Services Cooperative Agreement (ESCA)

July 2023

---



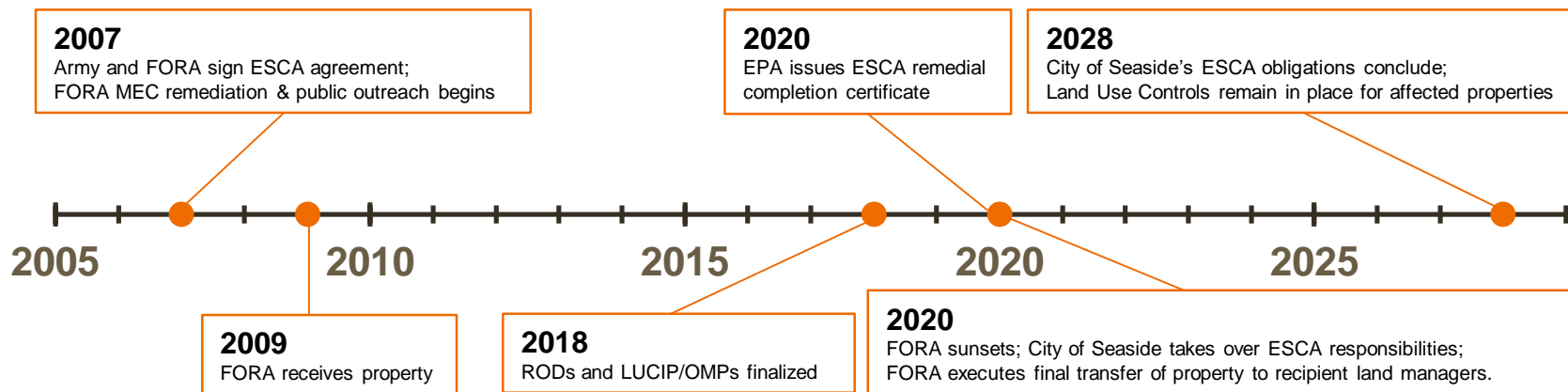
# Acronyms

|           |   |
|-----------|---|
| CSUMB     | California State University, Monterey Bay                           |
| ESCA      | Environmental Services Cooperative Agreement                        |
| FORA      | Fort Ord Reuse Authority  |
| LTO       | Long Term Obligations   |
| LUC       | Land Use Control(s)   |
| LUCIP/OMP | Land Use Control Implementation Plan/Operation and Maintenance Plan |
| MEC       | Munitions and Explosives of Concern                                 |
| MOUT      | Military Operations in Urban Terrain                                |
| MPC       | Monterey Peninsula College  |
| MRA       | Munitions Response Areas  |
| PPP&PM    | Police, Permits, Planning and Property Managers                     |
| ROD       | Record of Decision  |

# What is the Environmental Services Cooperative Agreement ?

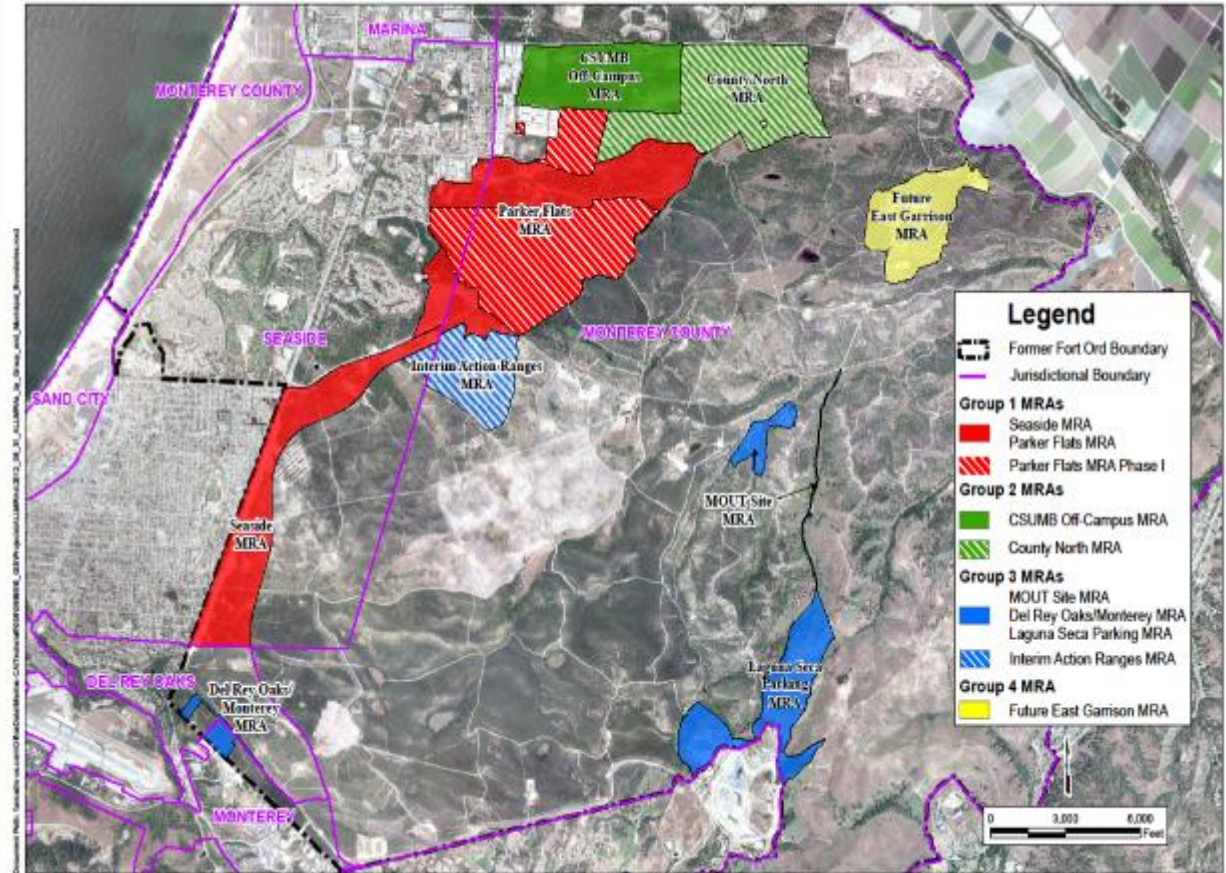
- This is a mechanism that allows the federal government to provide cleanup funding to approved authorities
- The current purpose of the program is to address residual safety issues associated with former munitions training conducted in Fort Ord
- City of Seaside, as successor to the Fort Ord Reuse Authority, is responsible for the long term implementation of the land use controls for public safety

# Status and History of the ESCA



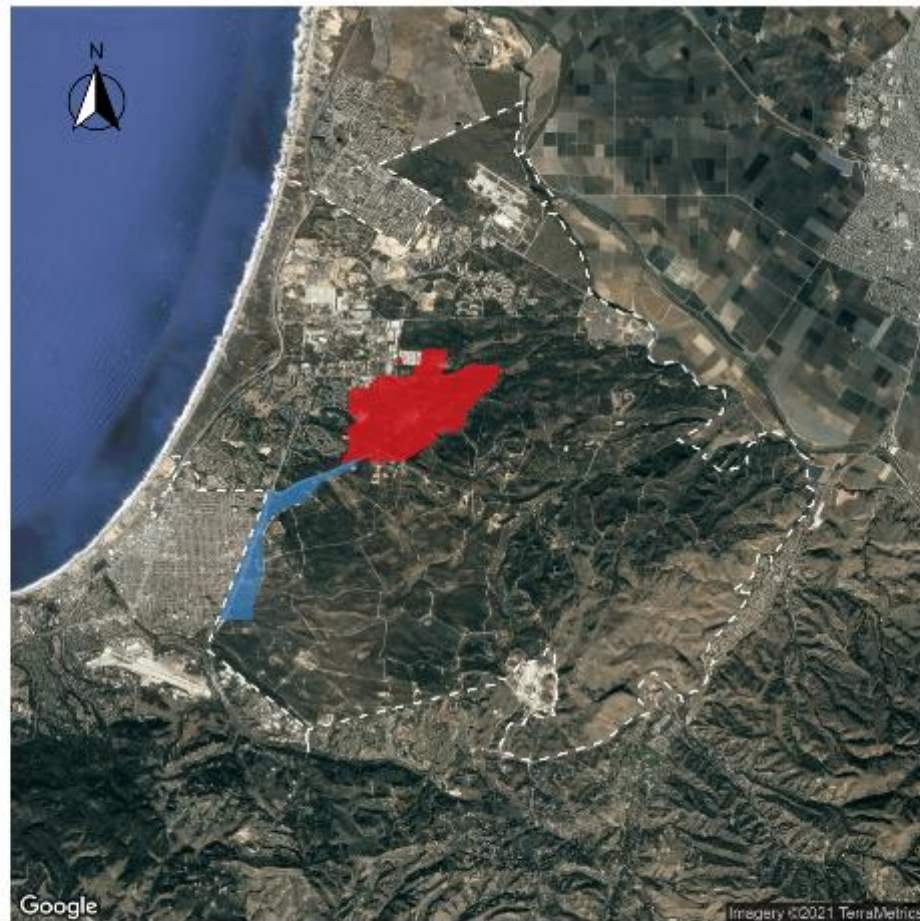
# ESCA Properties

- ~3,300 acres of former Ft. Ord
- Lands located within the jurisdictional boundaries of Monterey County and the cities of Del Rey Oaks (DRO), Monterey, and Seaside.



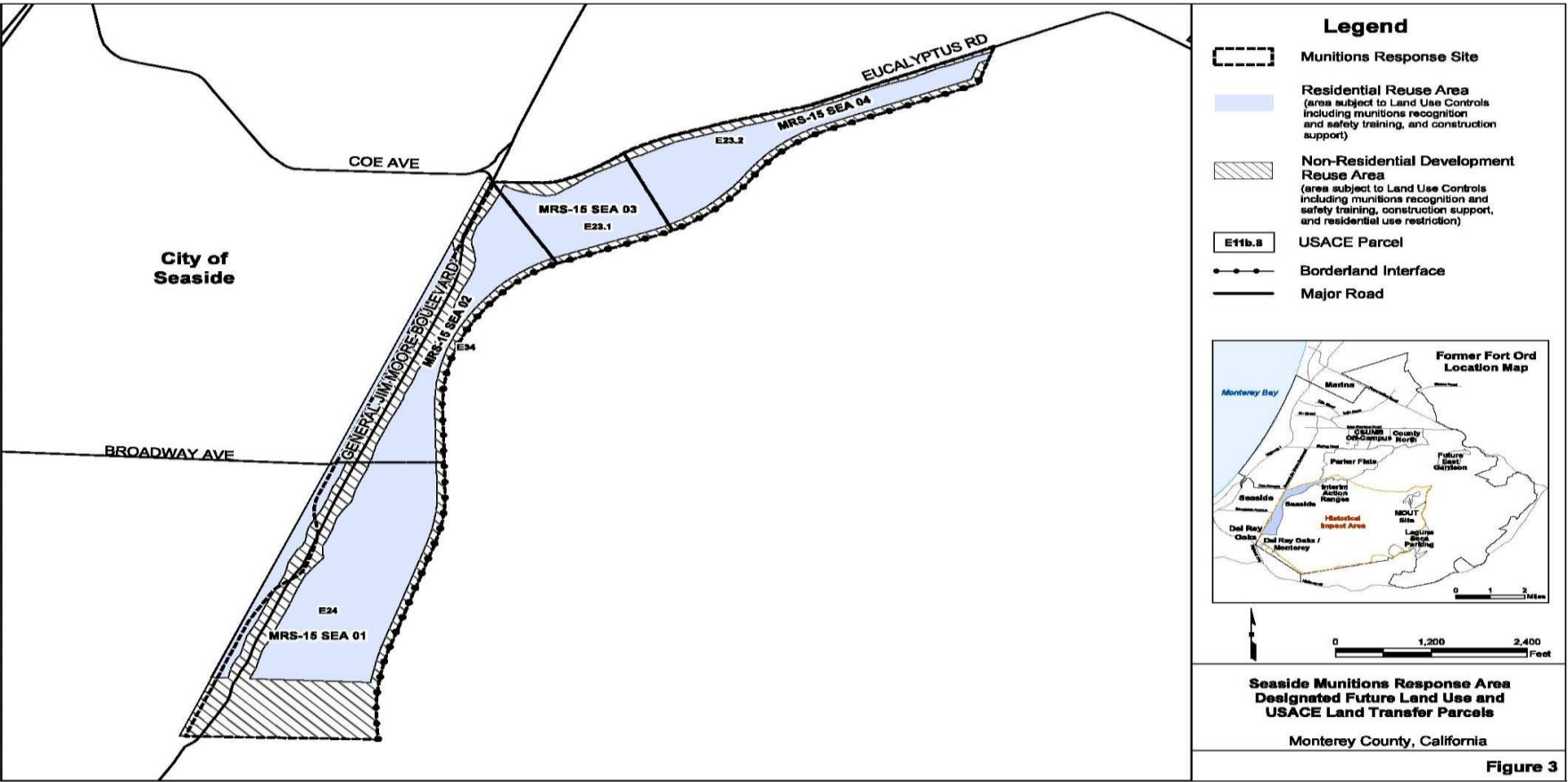
# Group 1: Seaside and Parker Flats

- Cleanup status:
  - Removals complete
  - Land use control requirements (ESCA-0361E)
  - Land transferred
- Proposed Future Reuses
  - Residential
  - Non-residential development
  - Habitat Reserve
  - Veteran's Cemetery





# Group 1 Re-Use Designation



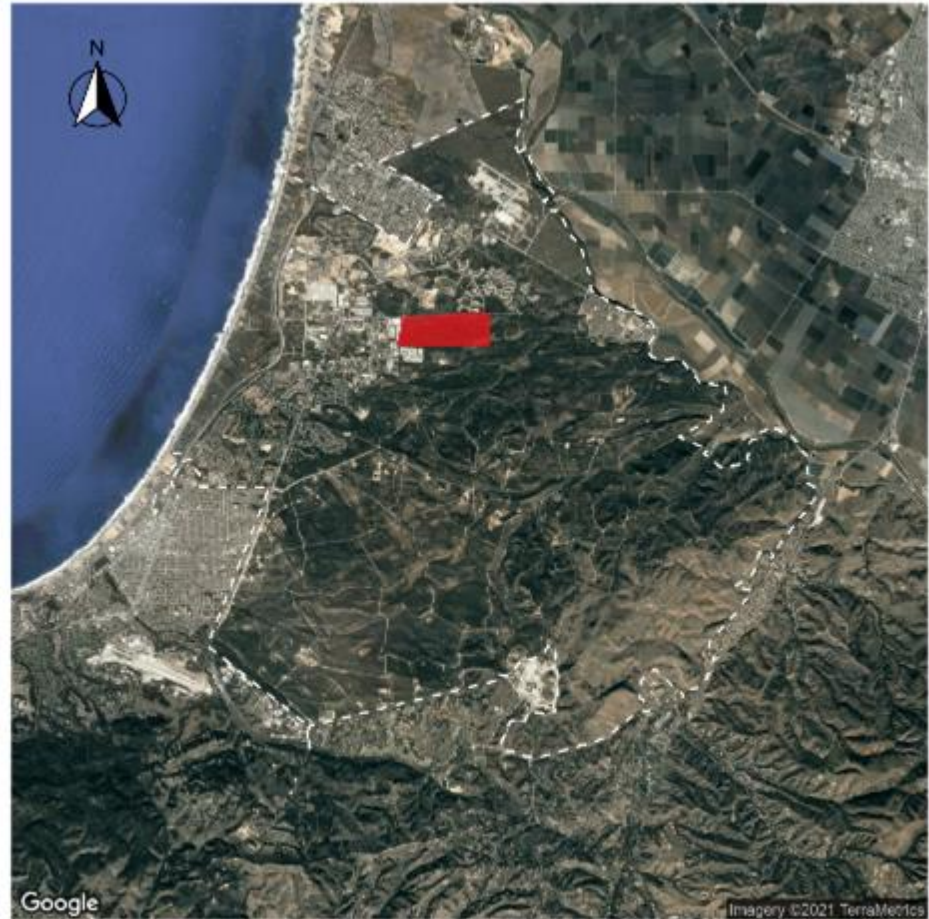
Z:\GIS\Projects\ENWR\Out059516\GIS\Projects\G1\_LUCIP\_OMP\F5\_Group\_1\_Park\Flats\_MPA\_Phase\_II\_Designated\_Future\_Land\_Use\_USACE\_Land\_Transfer\_Parcels.mxd 8/20/2019 @ 7:22:10 AM



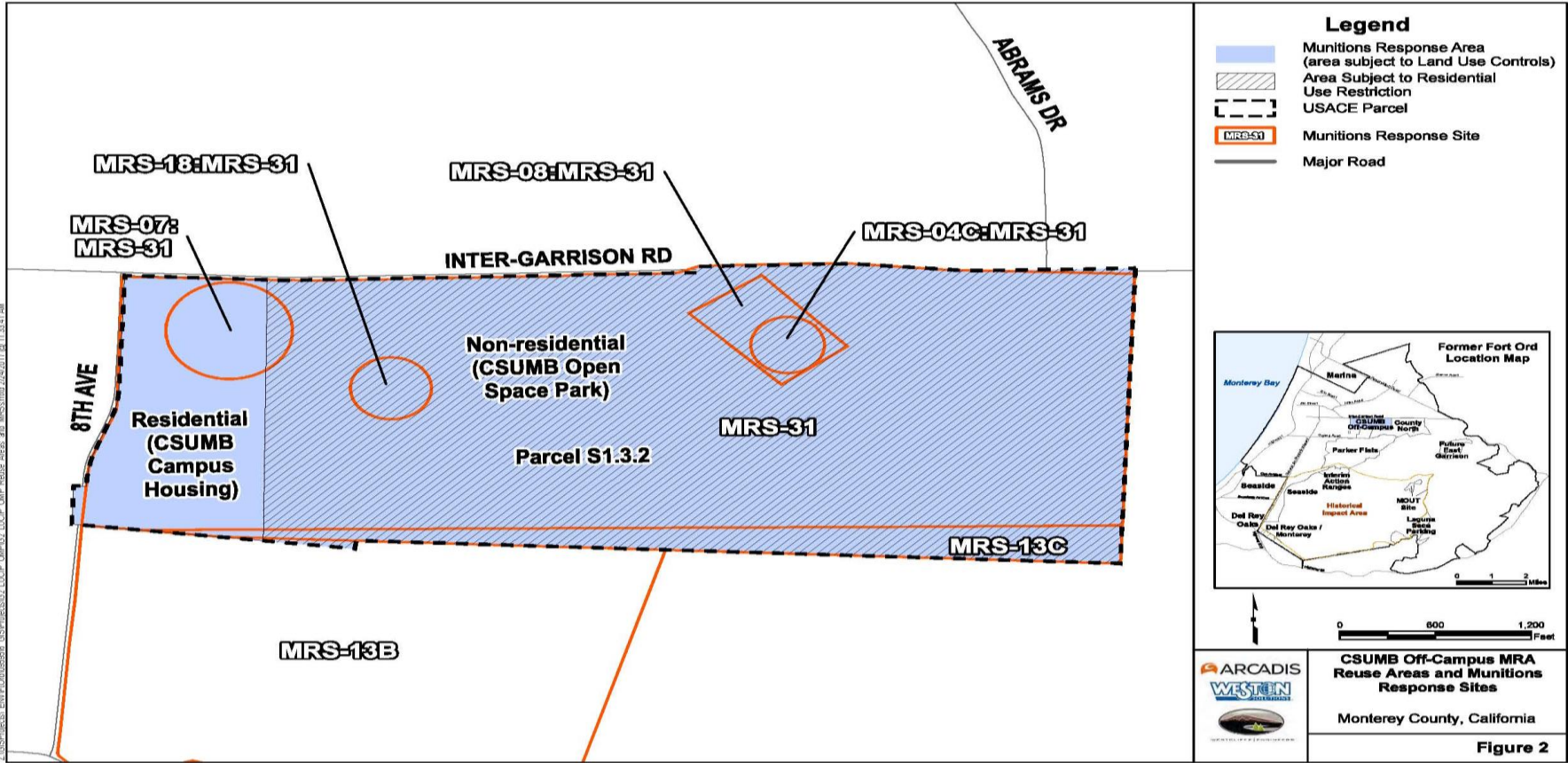


# Group 2: CSUMB Off-Campus

- Cleanup status:
  - Removals complete
  - Land use control requirements (ESCA-0305B)
  - Land transferred
- Proposed Future Reuses
  - Residential
  - Non-residential development

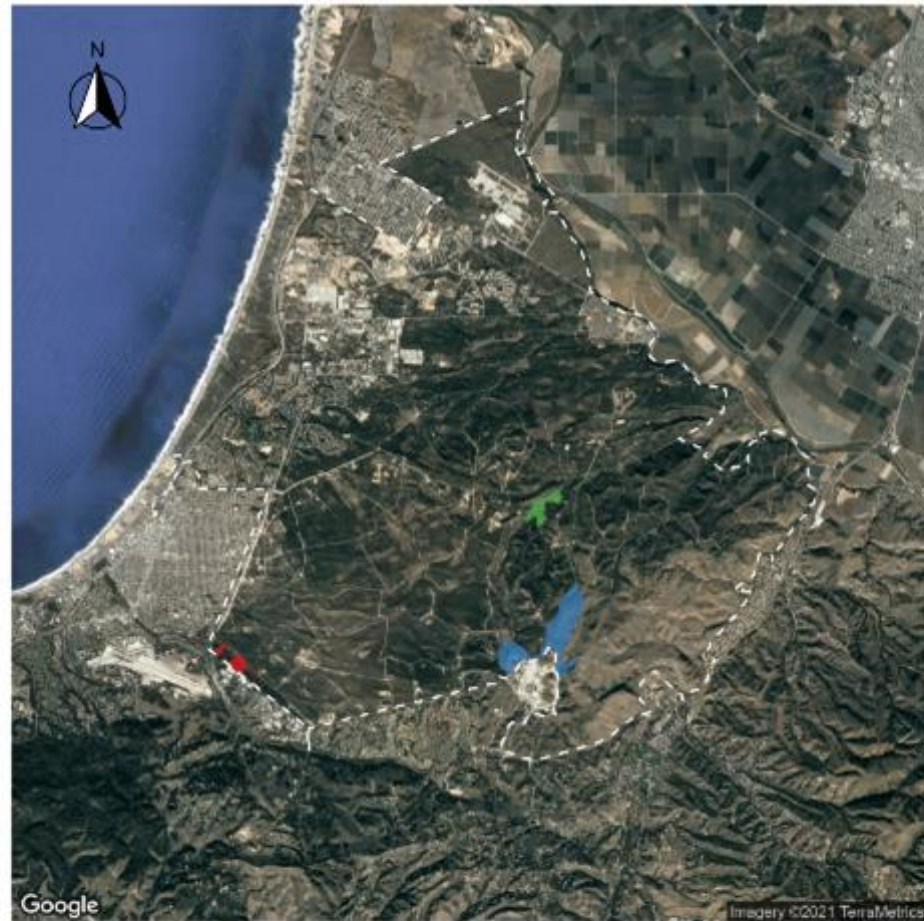


# Group 2 Re-Use Designation



# Group 3: DRO/Monterey, Laguna Seca Parking, MOUT Site

- Cleanup status:
  - Removals complete
  - Land use control requirements (ESCA-0301B)
  - Land transferred
- Proposed Future Reuses
  - Habitat management
  - Non-residential development
  - Continued use as overflow parking
  - Continued use as law enforcement training area

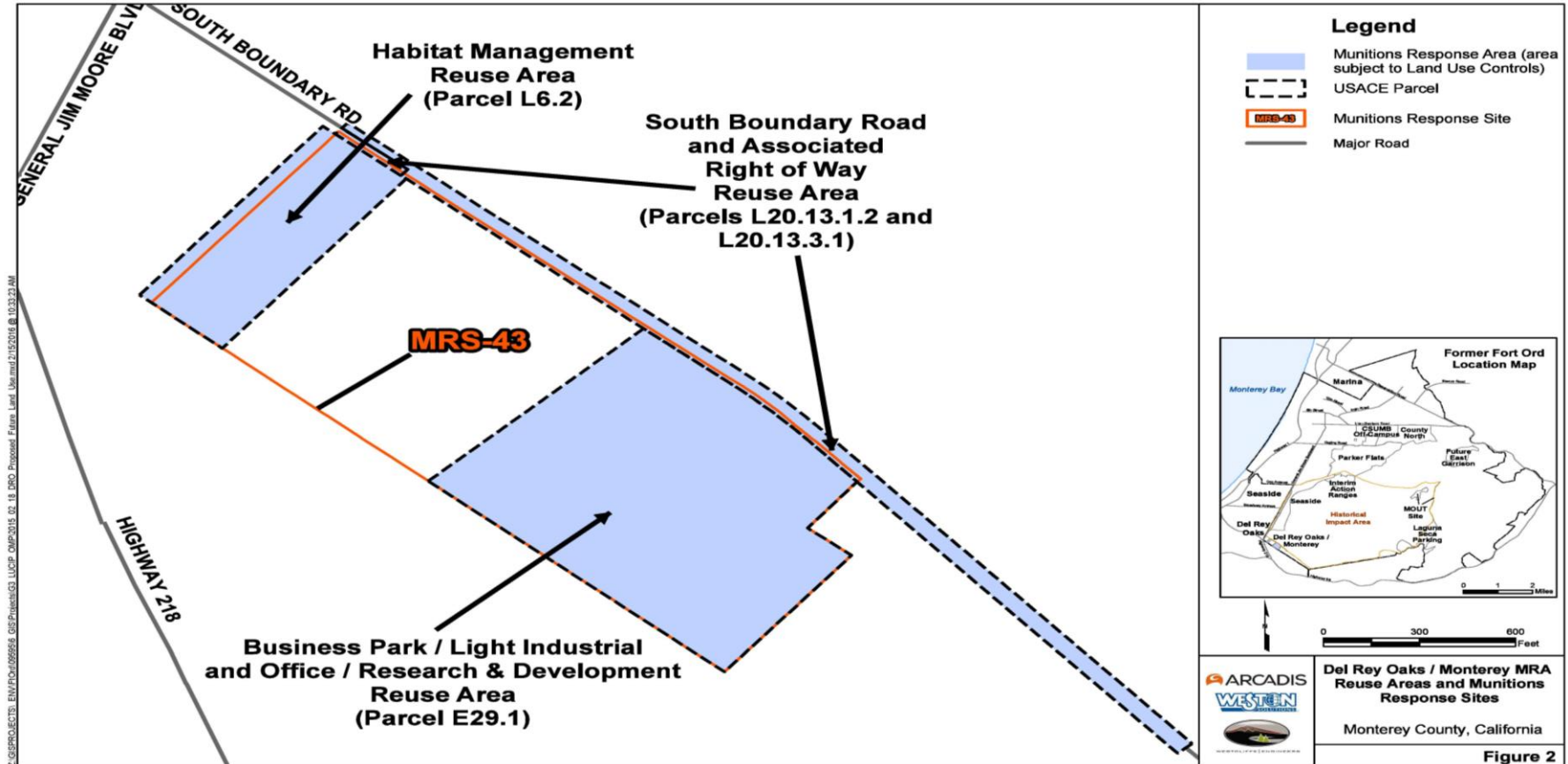




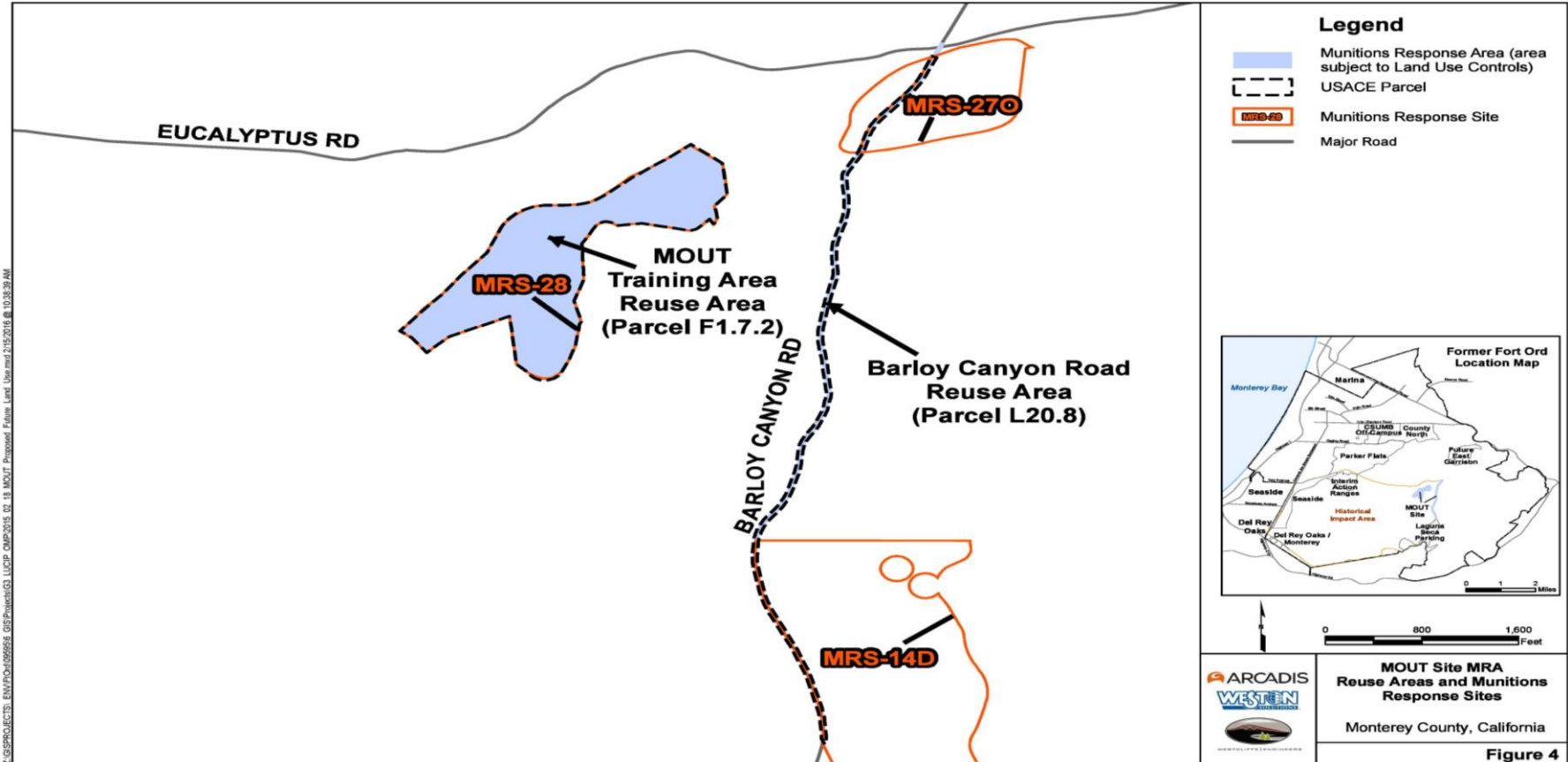
GISPROJECTS\ENVI\Prod\095956 GIS Projects\G3 LUCIP OMP\2015 02 18 LSP Proposed Future Land Use.mxd 2/15/2016 @ 10:36:15 AM



# Group 3 Re-Use Designation



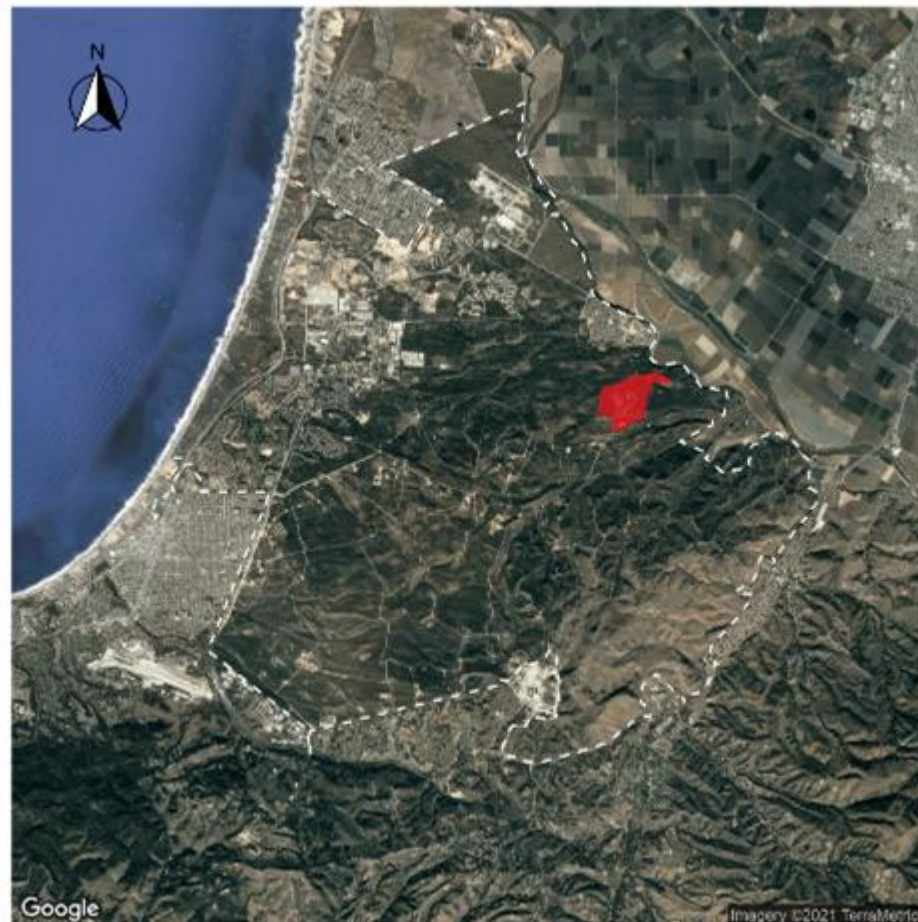
# Group 3 Re-Use Designation



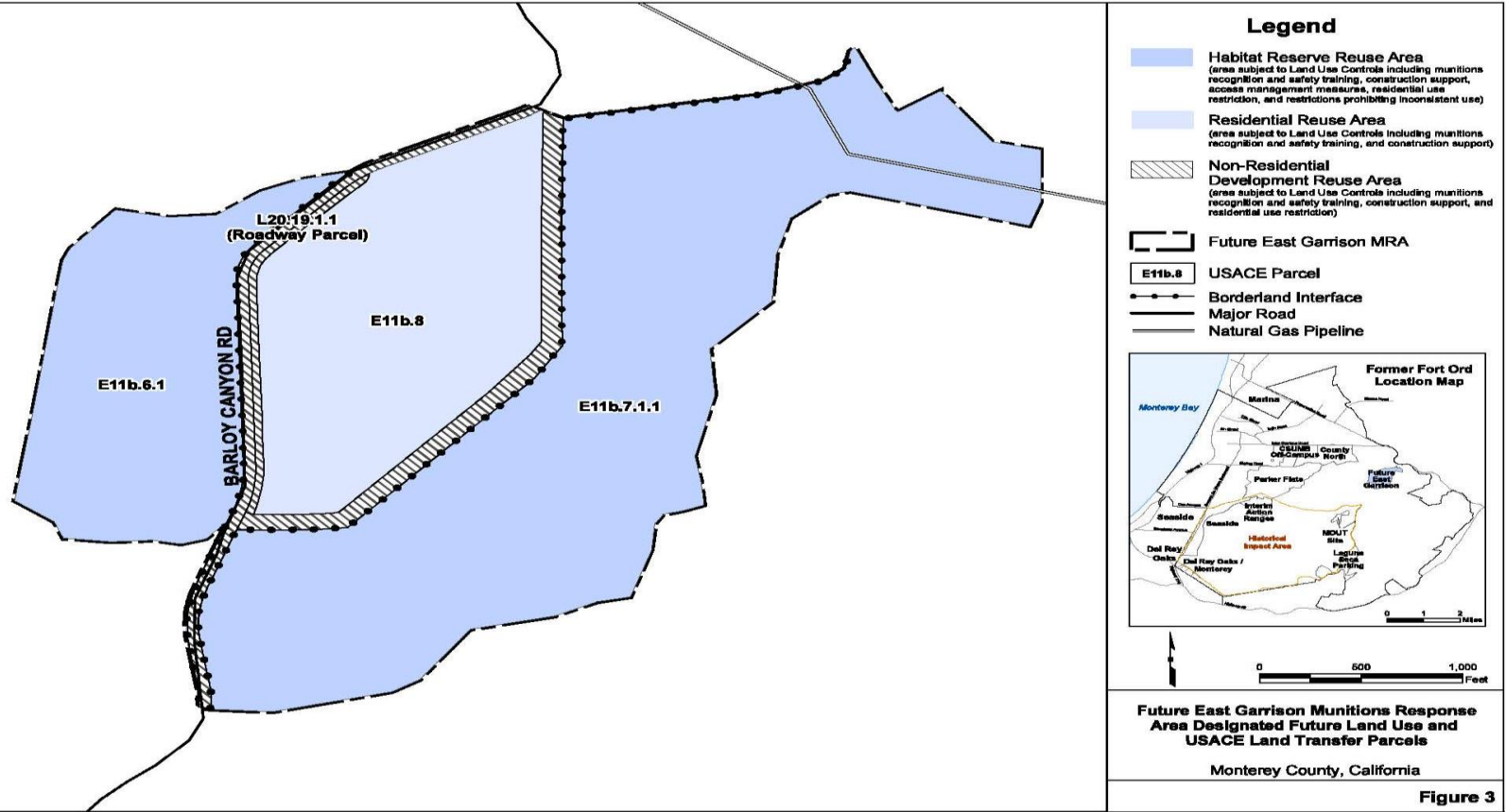


# Group 4: Future East Garrison

- Cleanup status:
  - Removals complete
  - Land use control requirements (ESCA-0364B)
  - Land transferred
- Proposed Future Reuses
  - Residential
  - Non-residential development
  - Habitat reserve

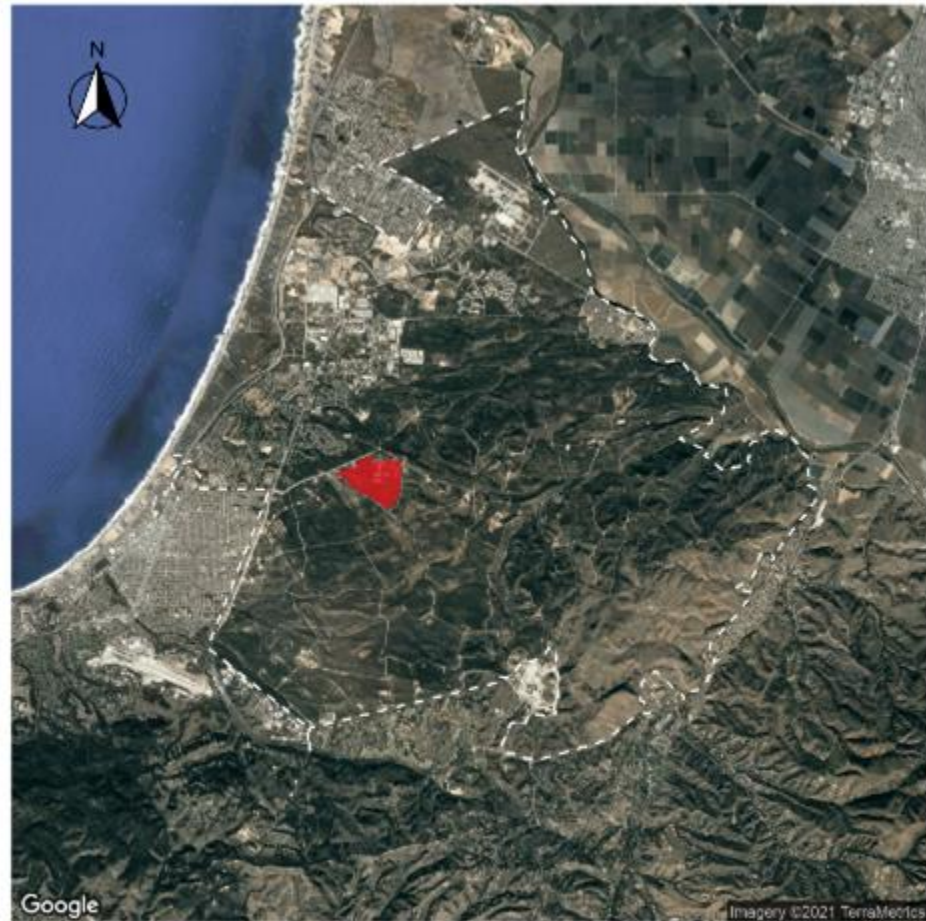


# Group 4 Re-Use Designation

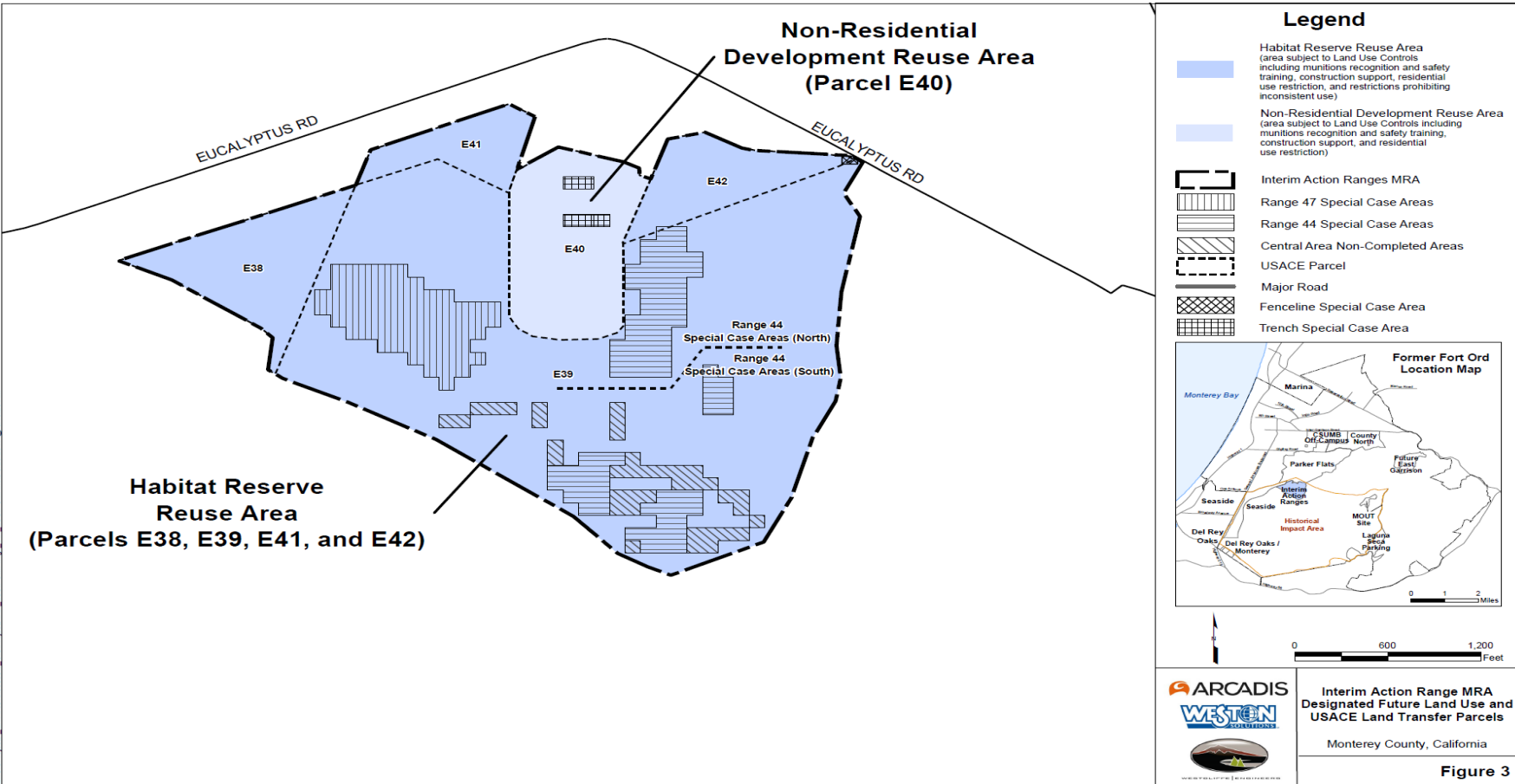


# Interim Action Ranges

- Cleanup status:
  - Removals complete
  - Land use control requirements (ESCA-0337B)
  - Land transferred
- Proposed Future Reuses:
  - Non-residential development
  - Habitat reserve



# Interim Action Ranges Re-Use Designation



# Land Use Controls Remedy Overview

## Munitions Recognition & Safety Training

---

- Ensure that land users involved in ground disturbing activities are educated about:
  - Munitions and Explosives of Concern
  - How to report
  - Who to notify

## Construction Support

---

- Define construction support levels and requirements
- Implementation guidance
- Process for responding to MEC

## Residential Use Restriction

---

- Maintain residential use restrictions
- Applicable only to properties designated for non-Residential Re-use

## Habitat Reserve Restrictions

---

- Maintain habitat reserve areas access and use restrictions
- Applicable only to properties designated for Habitat Reserve



# LUC Instruments and Agreements

## Local Digging and Excavation Ordinances

- Adopted by County and Cities
- Ensure awareness of potential MEC and establishes requirements for permits and construction support

## Memorandum of Agreement with DTSC

- FORA, County, Cities, CSUMB, and MPC agreement with DTSC
- Implement compliance monitoring and reporting on LUCs

## Covenants to Restrict Use of Property

- Place restrictions on use of the property
- Prohibit activity in violation of jurisdiction ordinances

## Deed Restrictions

- Place restrictions on use of the property
- Requires notice of potential MEC, construction support and requirements for response to suspect MEC finds



# Munitions Recognition and Safety Training



fortordsafety.com



Military Munitions 3Rs  
Explosives Safety Guides



Construction Support Site-  
Specific Training

# Recent Activities

- Continued work with land owners to discuss and review land use restrictions that apply to their specific Fort Ord parcels
- Participated in community outreach events



# Contact Us

<https://www.ci.seaside.ca.us/fortordescasca>

[esca@ci.seaside.ca.us](mailto:esca@ci.seaside.ca.us)

(831) 899-6773 or (831) 899-6774

656 Broadway (Seaside Creates office) Seaside, CA 93955

