

Upcoming Environmental Activities

Collection of Soil, Soil Gas, and Groundwater Samples

May to June 2014

Some shoppers and employees of The Dunes on Monterey Bay ("The Dunes") shopping center in Marina may see workers and drilling equipment in the parking lot starting in May.

WHAT? The Army will be drilling soil borings and installing groundwater monitoring wells, and collecting soil, soil gas, and groundwater samples. The information is needed to further investigate the presence of soil gas contamination potentially originating from groundwater in this area.

Typical drilling equipment is shown to the right and typical sampling equipment is shown below. During drilling, you may see some small areas coned off to allow for the safe operation of equipment and workers. To maintain safety during the drilling, public access will be restricted in the immediate area of the drill rig. Additionally, you may hear periods of loud sounds from the drill rig. A map of the locations where drilling will occur is shown on the reverse side. It is anticipated that drilling and sample collection will take five to six weeks. Drilling and sampling activities will be conducted according to California Department of Toxic Substances Control guidance documents.



Typical Drilling Equipment



Typical Sampling Equipment

WHAT IS SOIL GAS? Soil gas, also known as soil vapor, is the air found in the spaces between soil particles. The soil gas found near groundwater contaminated with volatile chemicals can also become contaminated when these chemicals vaporize or evaporate into the soil gas. The groundwater in this area is located about 80 feet below ground surface, has low levels of volatile chemicals and is being actively cleaned up by the Army. Safe sampling practices and air monitoring will be used to ensure there is

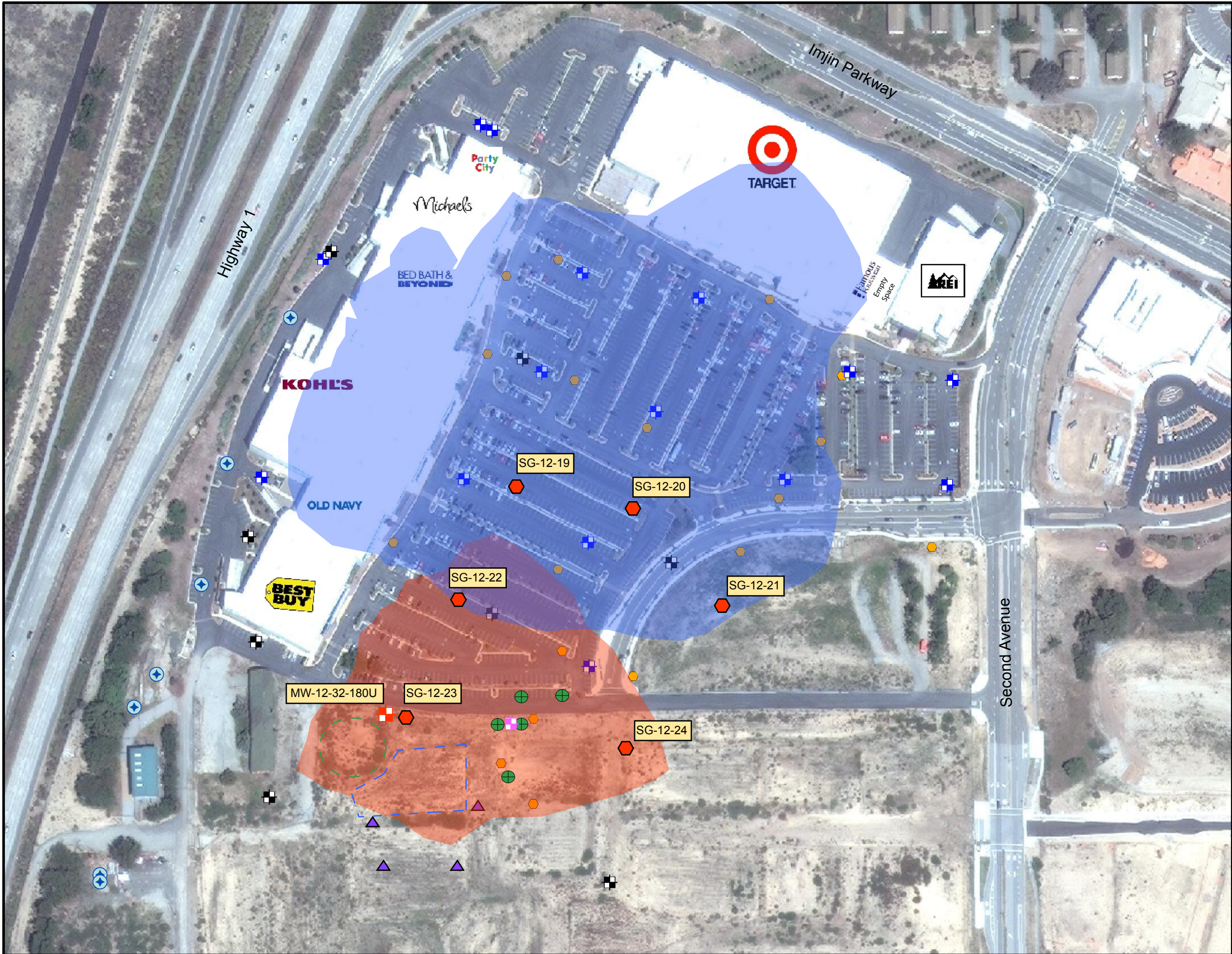
no potential for exposure of contaminated soil gas to workers or members of the public during drilling and sampling. Based on the soil gas data collected in late 2013, additional samples are needed to further investigate soil gas at the site. Results of the previous sampling events and of the current sampling will be available online in the Administration Record (www.FortOrdCleanup.com).

QUESTIONS

Fort Ord Community Relations Office, U.S. Army Fort Ord BRAC Office (www.FortOrdCleanup.com)

Melissa.M.Broadston.ctr@mail.mil or (831) 393-1284

Para obtener una copia en español, llame (831) 393-1284



- Legend**
- Proposed Data Gap Monitoring Well Location
 - Proposed Data Gap Soil Gas Probe Location

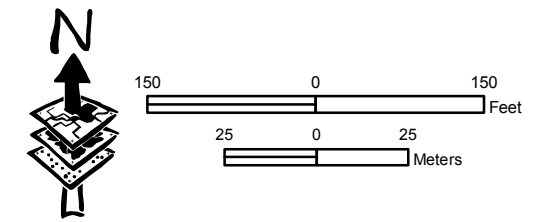
- Modeled Composite View 10-70 feet bgs PCE Plume 603 µg/m³ Contour*
- Modeled Composite View 10-70 feet bgs TCE Plume 888 µg/m³ Contour*

Soil Vapor Extraction (SVE) Pilot Study Work Plan Proposed Locations:

- Proposed Groundwater Monitoring Well Location (installed before SVE Pilot Study)
- Proposed Soil Vapor Extraction and Air Sparge Nested Well Location

- RI/FS 2013 Soil Gas Probe Location (permanent completion)
- June 2013 Soil Gas Sample (temporary-probe abandoned)
- Existing Monitoring Well Location
- RI/FS 2013 Monitoring Well Location
- Extraction Well Location
- Stormwater Infiltration Basin*
- Berm*
*Inaccessible to drill rig

*Note: The modeled extent of the plumes and analytical results for soil gas samples collected from locations north of Target and between Highway 1 and The Dunes on Monterey Bay indicate COCs are below soil gas screening levels in these areas; therefore no additional investigation is required in these areas.



Proposed Soil Gas Probe and Monitoring Well Locations
Technical Memorandum - Data Gap Investigation
RI/FS Addendum at Sites 2/12
Former Fort Ord, California