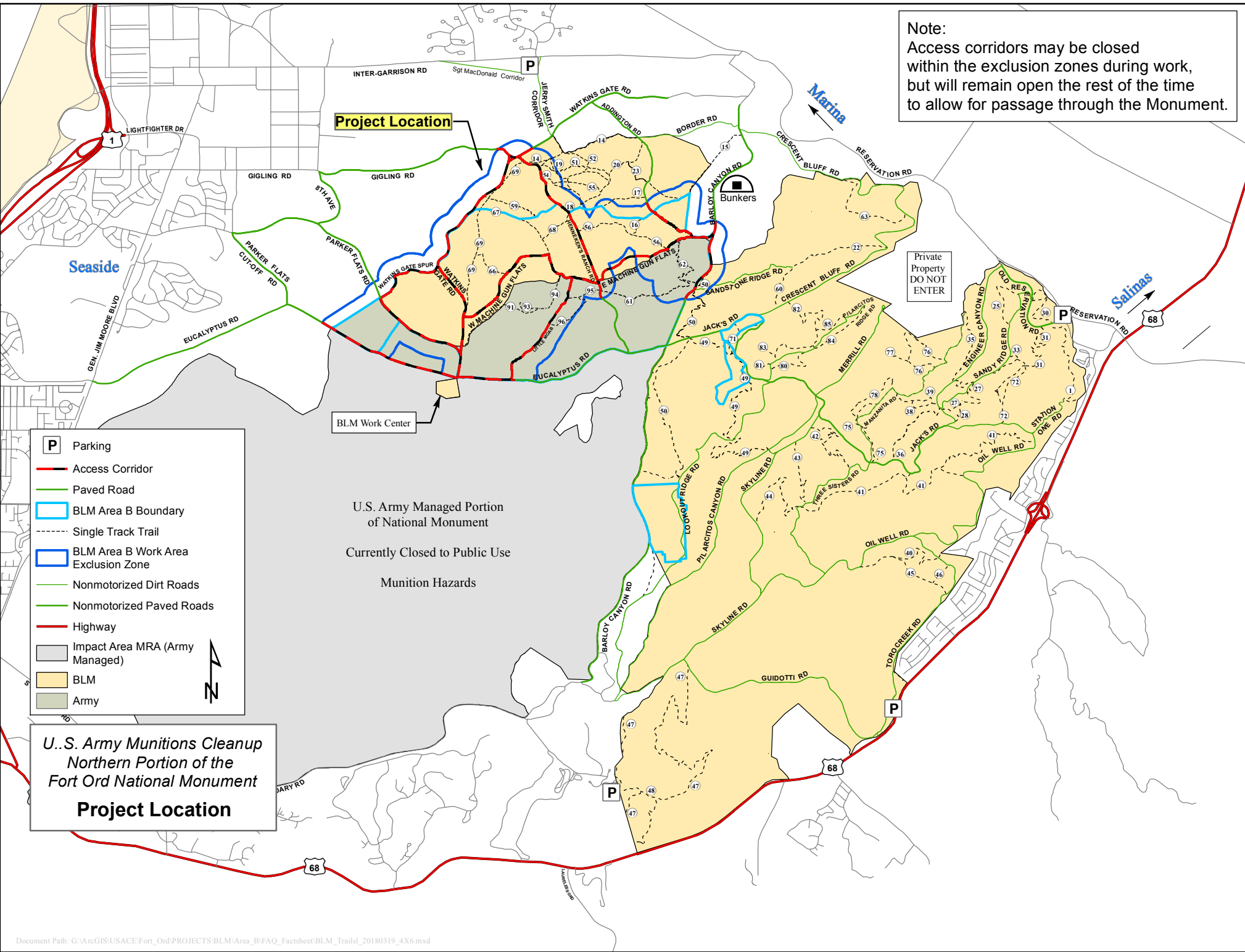


Note:
Access corridors may be closed within the exclusion zones during work, but will remain open the rest of the time to allow for passage through the Monument.



Project Location

Private Property
DO NOT ENTER

- P** Parking
- Access Corridor
- Paved Road
- BLM Area B Boundary
- - - Single Track Trail
- BLM Area B Work Area Exclusion Zone
- Nonmotorized Dirt Roads
- Nonmotorized Paved Roads
- Highway
- Impact Area MRA (Army Managed)
- BLM
- Army

U.S. Army Managed Portion
of National Monument
Currently Closed to Public Use
Munition Hazards

**U.S. Army Munitions Cleanup
Northern Portion of the
Fort Ord National Monument
Project Location**